

DECOYS & SPORTING COLLECTIBLES

Auction

September 24, 2010
THE TUCKERTON SEAPORT
TUCKERTON, NEW JERSEY

Preview: Thursday, September 23, 3:00 p.m. to 5:00 p.m.
Friday, September 24, 8:00 a.m. to 10:45 a.m.

Auction: Friday, September 24, 11:00 a.m. Start Time

Directions: South or north on the Garden State Parkway to Exit 58 Tuckerton. Proceed into Tuckerton and make a right on to E. Main Street (Route 9). Proceed approximately 1/4 mile. The entrance to the Tuckerton Seaport will be on the left. The auction will be held in the Perrine's Boat Works.

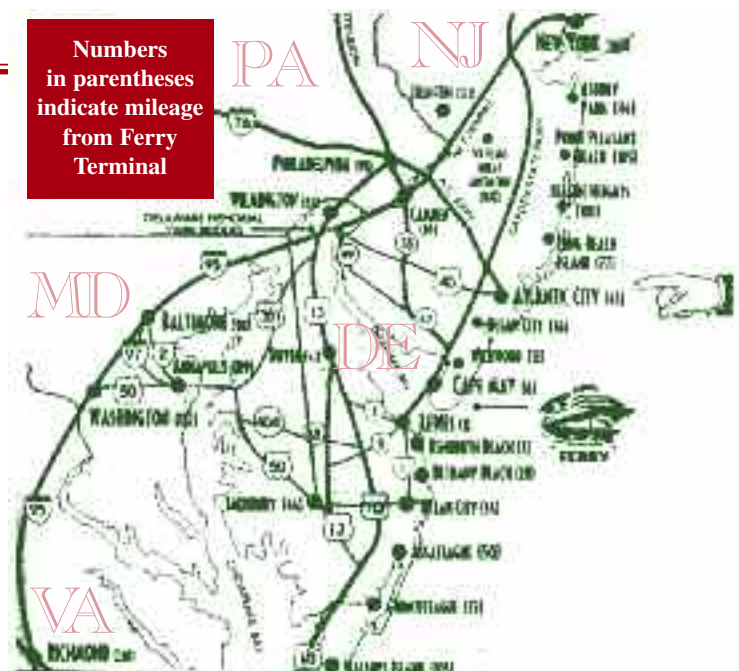
Catalog: Fully illustrated, \$25.00 (\$34.00 Outside U.S.) -- includes post sale price key.

Information: For auction information and absentee/phone bidding information:
Frank & Frank Sporting Collectibles LLC
422 Lakewood-Farmingdale Road
Howell, NJ 07731
Phone/Fax: (732) 938-2988

Visit us at: www.frankandfrankdecoys.com • Email: afrank1807rh@cs.com



will be accepting
CONSIGNMENTS
for our
**SPRING 2011
AUCTION**
Call Early
to reserve space!
Limited to 400 lots.





1 PAIR OF RING NECKS by the Wildfowler Decoy Company, Pt. Pleasant, NJ. Both in excellent original paint by Bill Keim. Structurally good condition with repair to bill of hen. Both signed and dated 1980 on bottoms. 200-300

2 PAIR OF VERY FINE CANVASBACKS by the Wildfowler Decoy Company, Pt. Pleasant, NJ. Hollow carved Ward Bros. models. Excellent original paint, probably by Bill Keim. Raised painted feather texture. Structurally excellent. Hollow carved. Both branded CRB and signed *Charles R. Birdsall, Pt. Pleasant, N.J.* Also, #1 of a pair and #2 of a pair on bottoms. 300-400

3 RARE RED-BREASTED MERGANSER DRAKE by Charles R. Birdsall, Pt. Pleasant, NJ. Excellent original paint and structurally fine condition. Hollow carved in the manner of H.V. Shourds. Branded CRB and signed on bottom. 300-400

4 RED HEAD DRAKE by the Wildfowler Decoy Company, Pt. Pleasant, NJ. Very early Cranmer model in excellent original paint and unused condition. Hollow carved with inlet bottom weight. Retains early ink stamp on bottom. Some sap bleed to head crest. Together with a ONE-THIRD SIZE CANVASBACK DRAKE, possibly a Wildfowler kit. Good original paint with some staining to rear left. Scratch feather paint. Unsigned. One Shown. 200-300

5 AN EXCEPTIONAL PAIR OF BLUEBILLS by the Wildfowler Decoy Company, Pt. Pleasant, NJ. Excellent original paint by Bill Keim. Structurally excellent condition. Both exhibit fine painted feather work and detail. Cranmer models. Both are signed by Mr. Keim and dated 1978 on bottoms. 300-500

6 PAIR OF BLUE WING TEAL by Barnegat Bay Decoys, Pt. Pleasant, NJ. Excellent original paint and structurally sound condition. Relief-carved wings and snug-head position. Hollow carved, unused, unrigged. Both signed and dated 1982 on bottoms. 150-250

7 PAIR OF SWIMMING MALLARDS by the Wildfowler Decoy Company, Pt. Pleasant, NJ. Excellent original paint by Bill Keim, showing some sugar pine foxing to drake. Structurally sound. Both heads turned slightly right in a swimming position. Both signed and dated 1979. Unrigged and unused. 200-300

8 RARE EARLY SNOW GOOSE attributed to the Wildfowler Decoy Company, Pt. Pleasant, NJ. Very good original paint, probably by Bill Keim. Hollow construction, snakey-head model with excellent bill detail. Very minor flaking at neck seam and right side seam. Rare Wildfowler decoy. 300-500

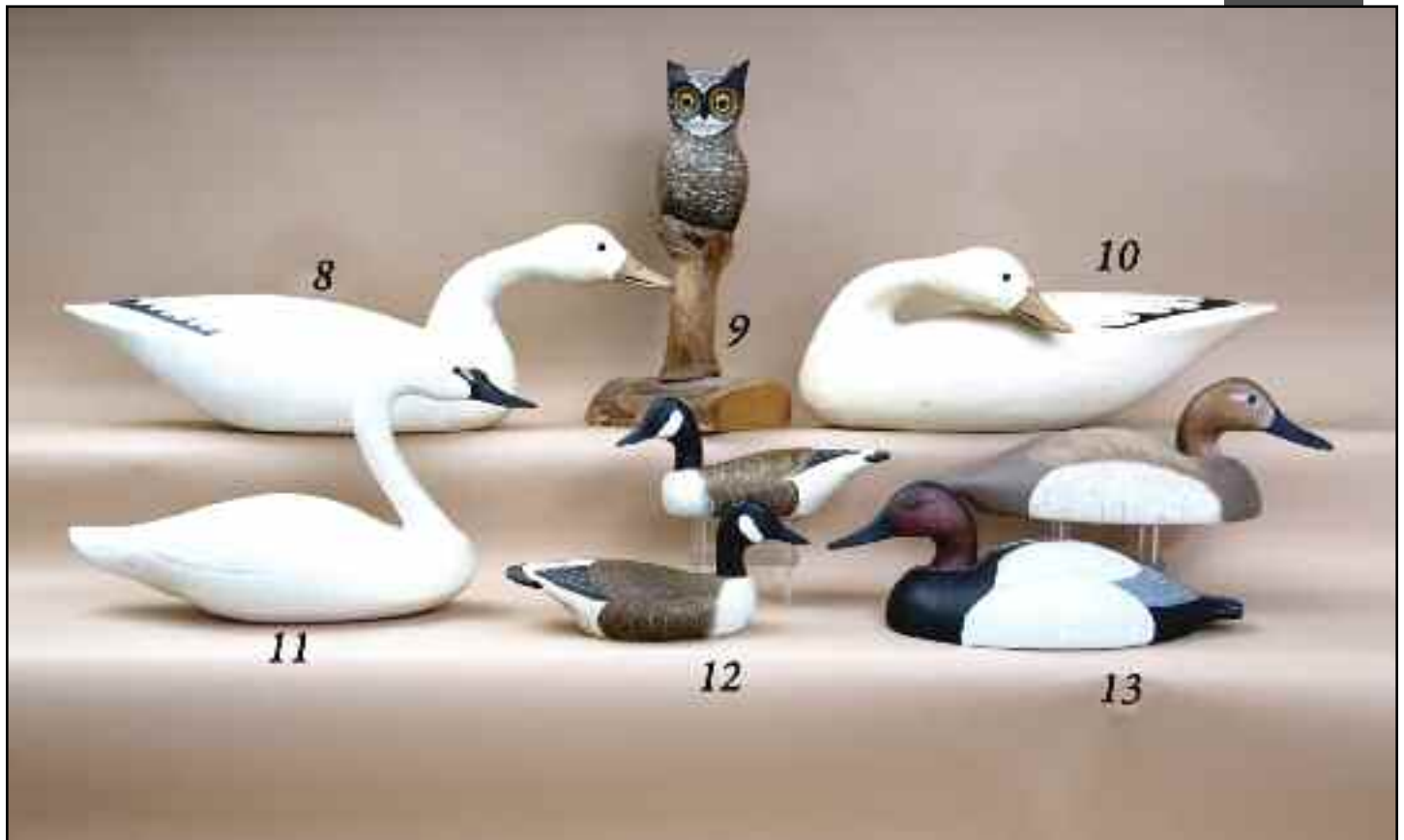
9 EXTREMELY RARE OWL by Charles R. Birdsall, Pt. Pleasant, NJ. Excellent original paint and condition. Deep relief-carved wings. Large peering glass eyes. Mounted on a custom wood base. Signed and dated 1975. 300-500

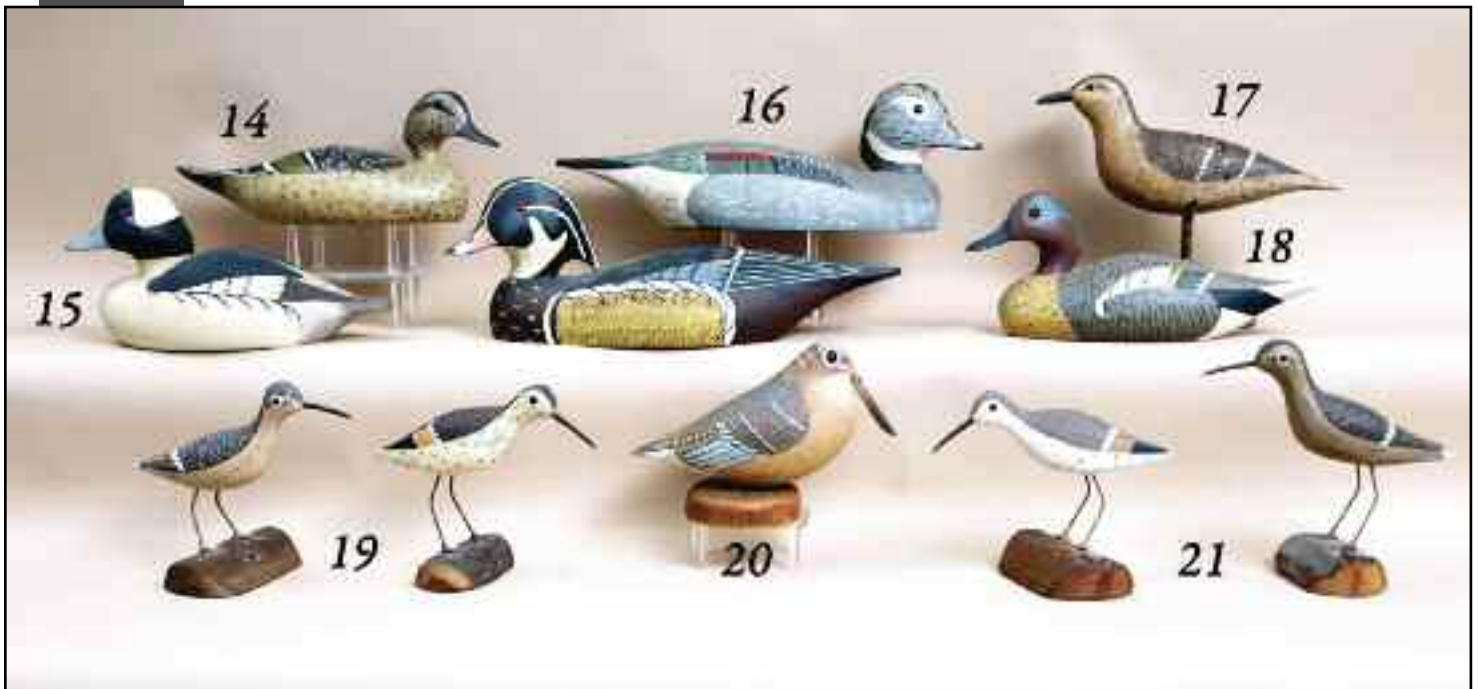
10 RARE PREENING SNOW GOOSE attributed to the Wildfowler Decoy Company, Pt. Pleasant, NJ. Very good original paint with minor flaking on breast, front neck seam and side seams. Hollow carved with excellent bill detail. Original glass eyes. Paint probably by Bill Keim. 400-600

11 ONE-QUARTER SIZE SWAN by the Wildfowler Decoy Company, Pt. Pleasant, NJ. Excellent original paint by W. Keim with relief-carved wing tips. Excellent structural condition. 200-300

12 PAIR OF ONE-QUARTER SIZE CANADA GEESE by the Wildfowler Decoy Company, Pt. Pleasant, NJ. Excellent original paint with some staining under tails. Structurally very good condition. Both signed and dated 1980 on bottoms. 200-300

13 PAIR OF CANVASBACKS by the Wildfowler Decoy Company, Pt. Pleasant, NJ. Excellent original paint and fine unused condition. Both painted by Bill Keim. Signed and dated 1978. 200-300





14 GREEN WING TEAL HEN from the Wildfowler Decoy Company, Pt. Pleasant, NJ. Excellent original paint by John Hillman. Excellent structural condition. Head turned slightly right. Notation on bottom reads: *Paint by John Hillman, 1970. Green wing teal.* 100-200

15 BUFFLEHEAD DRAKE by the Wildfowler Decoy Company, Pt. Pleasant, NJ. Near-mint original paint and structurally sound condition. Ice groove separation on wings. Retains Wildfowler ink stamp. Signed *Charles R. Birdsall* and dated 1972. Painted by Dottie Clayton. 200-300

16 PAIR OF WOOD DUCKS by the Wildfowler Decoy Company, Pt. Pleasant, NJ. Near-mint original paint and structural condition. Both in exceptional paint by Dottie Clayton, and marked so under bill. Both with Wildfowler ink stamp. Both signed by *Charles R. Birdsall* and dated 1970. Hen with Wildfowler business card stapled to bottom. 500-800

17 GROUP OF THREE SHOREBIRDS consisting of **BLACK BREAST PLOVER** by Barnegat Bay Decoys, in original paint with large white paint drip on head. Also, a **DOWITCHER**, unknown carver, in excellent original paint, and a **PLOVER** by Wildfowler with Bill Keim paint, with four drips of stain on body. All on custom bases. 200-300 One Shown

18 GREEN WING TEAL DRAKE by the Wildfowler Decoy Company, Pt. Pleasant, NJ. Near-mint original paint by Bill Keim. Structurally sound with deep ice groove on back. Retains Wildfowler ink stamp. Signed by *Charles R. Birdsall* and dated 1975. 200-300

19 SPOTTED AND BUFF-BREASTED SANDPIPERS by the Wildfowler Decoy Company, Pt. Pleasant, NJ. Excellent original paint and structurally sound condition. Both on custom bases marked with ink Wildfowler stamp. Both signed *Charles R. Birdsall*. One dated 1969, the other dated 1970. 200-300

20 VERY FINE WOODCOCK by the Wildfowler Decoy Company, Pt. Pleasant, NJ. Near-mint original paint by Bill Keim. Structurally excellent. Mounted on a custom base. Wildfowler ink stamp. Signed by *Charles R. Birdsall* and dated 1970. 300-400

21 SPOTTED AND BUFF-BREASTED SANDPIPES by the Wildfowler Decoy Company, Pt. Pleasant, NJ. Excellent original paint and structurally sound condition. Both on custom bases marked with ink Wildfowler stamp. Both signed *Charles R. Birdsall*. One dated 1969, the other dated 1970. 200-300



22 MASON CURLEW REPLICA by Barnegat Bay Decoys, Pt. Pleasant, NJ. Excellent original paint with some sugar pine foxing. Structurally excellent. Long wire bill. Painted by Fredrick C. Brown, Jr. Mounted on a custom base. Signed and dated 1980. 150-250

23 TWO CANVASBACK DRAKES by the Wildfowler Decoy Company, Old Saybrook, CT. Old factory repaints. Hollowed from the bottom. Both branded WGH. One Shown. 100-200

24 CANADA GOOSE by the Wildfowler Decoy Company, Pt. Pleasant, NJ. Very good original paint with some cord wrap marks evident. Structurally very good. Retains full bottom keel with strip weight and rigging. 200-300

25 MASON CURLEW REPLICA probably Wildfowler Decoy Company, Pt. Pleasant, NJ. Very good original paint and structurally good condition with 1 3/4" chip of wood missing from underside of tail. 100-200

26 TWO MAGNUM BLACK DUCKS by the Wildfowler Decoy Company, Pt. Pleasant, NJ. Very good original paint and structurally sound condition. Balsa construction. Full keels. Strong Pt. Pleasant brands. 100-200

27 TWO MAGNUM BLACK DUCKS by the Wildfowler Decoy Company, Pt. Pleasant, NJ. Very good original paint and structurally sound condition. Balsa construction. Full keels. Strong Pt. Pleasant brands. One Shown. 100-200

28 RARE FULL-SIZE OWL by a member of the Birdsall family, in excellent original paint and structurally sound condition. Retains large glaring yellow eyes. Mounted atop a placement stick. Signed *Birdsall* twice and dated 1991. One Shown. 200-300

29 TWO MAGNUM BLACK DUCKS by the Wildfowler Decoy Company, Pt. Pleasant, NJ. Very good original paint and structurally sound condition. Balsa construction. Full keels. Strong Pt. Pleasant brands. One Shown. 100-200





30 TWO PEEPS AND A YELLOWLEG All in excellent original paint and condition. Two mounted on custom bases. One branded B. 75-125

31 EARLY WIDGEON DRAKE by the Wildfowler Decoy Company, Old Saybrook, CT. Good original paint with gunning wear. Touch-up to left speculum. Balsa model with full keel. Structurally very good condition. Check to back of head. 100-150

32 EARLY RED HEAD HEN by the Wildfowler Decoy Company, Old Saybrook, CT. Very good original paint showing some in-use wear. Structurally sound with bottom keel removed. Branded WW GAMBLE WHITE LAKE WISC. 100-200

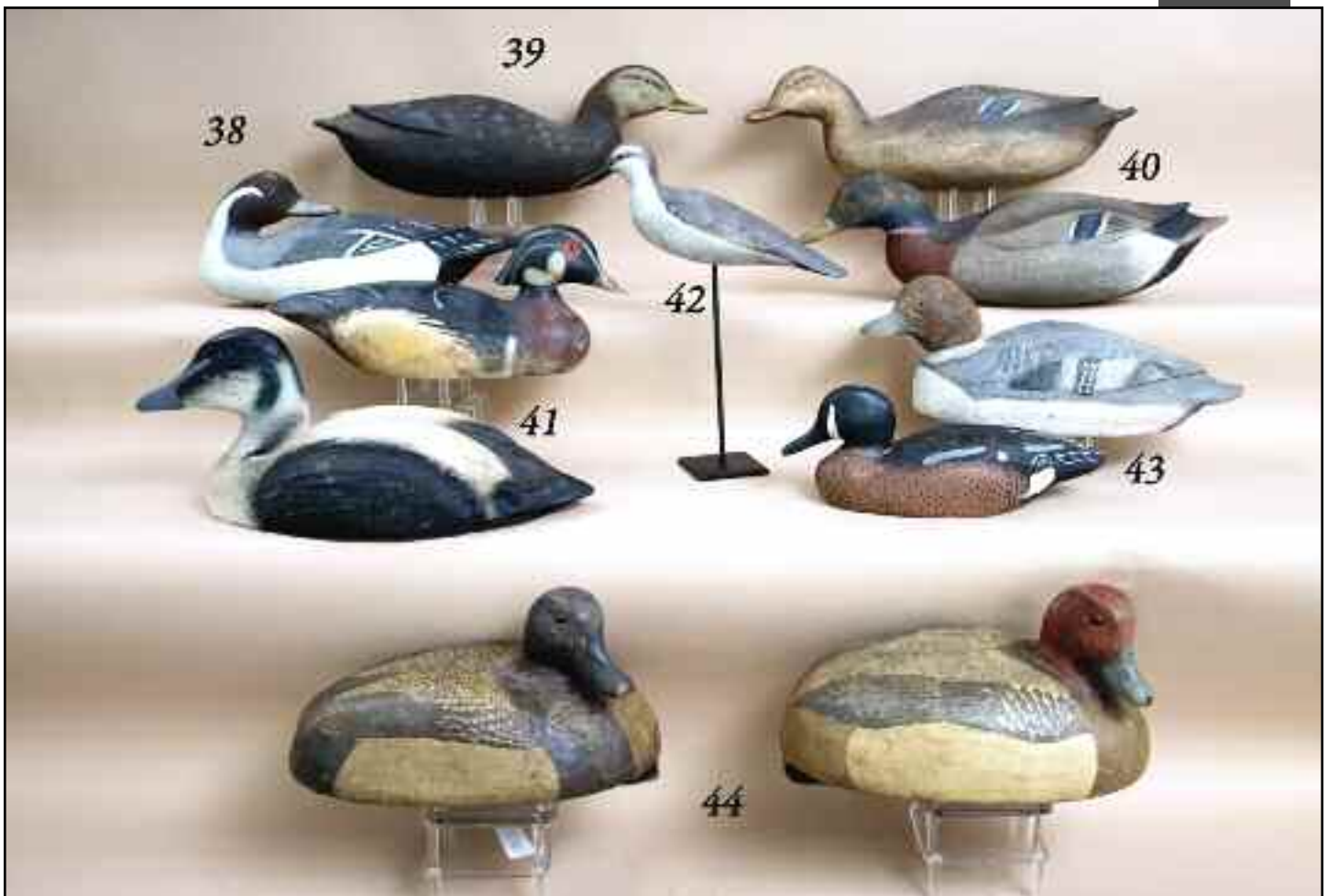
33 EARLY RED HEAD HEN by the Wildfowler Decoy Company, Quogue, NY. Very good original paint and condition. Constructed of dense balsa. Full bottom keel. Factory brand. 100-200

34 ONE-THIRD SIZE SWAN by Bud and Kevin Hammell. Original paint and good structural condition. Signed on bottom and dated 1986. Together with a ONE-QUARTER SIZE SWAN by Bud and Kevin Hammell, in good original paint with some staining, old crack in neck and dent on back. Also, a ONE-QUARTER SIZE BLACK DUCK signed by M. Stoetel. 100-200

35 CINNAMON TEAL by the Barnegat Bay Decoy Company, Pt. Pleasant, NJ. Excellent original paint and structurally sound condition. Relief-carved wings. Low-head position. Together with a ONE-THIRD SIZE SNAKEY-HEAD GOOSE by Bud and Kevin Hammell in good original paint with some sugar pine foxing on breast and tail area. Structurally good condition. Signed and dated 1984. 100-200

36 ONE-QUARTER SIZE SWAN carved in the manner of R. Madison Mitchell, probably by the Wildfowler Decoy Company, Pt. Pleasant, NJ. Very good original paint with some shelf marks and knot bleed. Very stylized head. 200-300

37 PAIR OF BLUE BILLS by Dick LaFountain, Great South Bay, NY. Good original paint and structurally good condition. Repaint to drake's head. Both bob-tail models with full keels. Both signed on keels and dated 1955. 100-200



38 PREENING PINTAIL DRAKE by Down East Sportscraft, Freeport, Maine. Excellent original paint and unused condition. Circa 1950. Elongated tail with raised carved wing tips. A rare decoy for this factory. 300-400

39 BLACK DUCK SWIMMER by Down East Sportscraft, Freeport, Maine, circa 1950. Excellent original paint and unused condition. Structurally very good with a small chip at the tail tip. Very strong paint detail. Stamped twice with maker's ink stamp on bottom. Very rare example with both a yellow and white factory stamp. 200-300

40 PAIR OF SWIMMING MALLARDS by the Down East Sportscraft, Freeport, Maine. Excellent original paint with minor shelf scuffs. Structurally very good condition. Both unused. Raised carved wing tips. Both retain yellow oval factory stamp. 400-600 Circa 1950

41 TWO FACTORY DECOYS by the Herter's Decoy Company, consisting of a wood duck drake in very good original paint with some missing on bill tip. Possibly an old repair. Unused condition. Branded *HERTER INC 1893* on bottom. Also, an EIDER DRAKE in very good paint and condition. 100-200

42 VERY EARLY YELLOWLEG OR WILLET by the Mason Decoy Company, Detroit, MI. Very early touch up to paint. Tack eye model. Structurally very good condition. 200-300

43 BLUE WING TEAL DRAKE by the Herter's Decoy Company. Excellent original paint with small rubs. Very good structural condition with repair at neck base. Branded on bottom. Together with a RARE GOLDENEYE HEN by Down East Decoy Sportscraft. Weathered paint that appears original with possible touch-up to gray areas. Structurally very good with relief-carved wings. 100-200

44 EARLY REDHEAD PAIR by the Herter's Decoy Company. Original canvas covering retaining original printed finish. Both bobtail models. Heads slightly turned. Both with full bottom keels. Rare early decoys. 300-500



45 MALLARD HEN by the Mason Decoy Company, standard grade, glass eye model. Very good original paint with minor in-use wear. 200-300

46 EARLY MALLARD HEN by the Mason Decoy Company, Detroit, MI. Very good original paint showing minor scuffs. Very good painted feather detail and swirling on back. Structurally very good condition with neck filler replaced. Minor chips to tail top. Area of wear to underside. Standard grade, glass eye model. See *Mason Decoys* by Goldberger and Haid, page 26 for similar examples. 300-400

47 CANVASBACK DRAKE by the Evans Decoy Company, Ladysmith, WI. Very good original paint showing in-use wear. Structurally very good with a small piece of wood missing from right side where neck meets body. Minor shot scarring. Bottom weight removed. 200-300

48 CANVASBACK DRAKE by the Mason Decoy Company, Detroit, MI, circa 1910. Excellent original paint with minor scuffs. Preserved by a coat of varnish. Premier grade, Chesapeake Bay model. Structurally very good condition with typical check at mid-neck. Some dents in bill tip. A one-inch chip of wood missing behind right eye. Right eye missing. Tight check on right side. Small knot on right side. See *Mason Decoys* by Goldberger and Haid, page 52, for an almost identical example. Branded PBC on bottom. 600-900

49 MALLARD HEN by the Mason Decoy Company, Detroit, MI. Premier grade in good original paint with in-use wear. Worn to wood under tail. Hollow carved with seam separation. Check to left side above seam. Bottom weights removed. Tail intact. 300-400

50 PAIR OF BLUEBILLS by the Mason Decoy Company, Detroit, MI. Standard grade, glass eye models retaining very good original paint with some in-use wear. Some loss to neck filler on hen. Both with A carved in bottom. 300-400

51 RARE RED-HEAD DRAKE by the Mason Decoy Company, Detroit, MI. Scarce Challenge grade model in fair original paint showing in-use wear. Excellent structural condition. Solid carved, snakey-head model. Very early circa 1900. See *Mason Decoys* by Goldberger and Haid, page 47, for an almost identical model. 300-500

52 TWO UNUSUAL AND RARE FACTORY SAMPLE DECOYS, a blue wing teal drake and a black duck. Both in original paint with some handling scuffs. Salesmen samples are rare in any condition. These are in fine early paint and condition. Both have cork bodies with wood bottom boards and wood heads. Both in good structural condition. Early and rare examples. 200-300

53 BLACK DUCK by the Mason Decoy Company, Detroit, MI, in fine restored condition. Standard grade, glass eye model. Small amount of filler missing from neck seam. 100-200

54 MALLARD DRAKE by the Mason Decoy Company, Detroit, MI. Good original paint with some in-use wear. Standard grade, glass eye model. Retains bottom weight and rigging staple and ex-owner's rig nail. 200-300

55 GROUP OF SEVEN FACTORY DECOYS consisting of four Standard grade Mason repaints, a black duck by L.L. Bean, cork, a Stevens repaint, and a black duck. 100-200 *View at on-line catalog*

56 MALLARD DRAKE by the Mason Decoy Company, Detroit, MI. Weathered original paint and structurally very good condition. Typical small chip from the tail. Hollow carved. One eye missing. Used as a stick-up. 400-500

57 GROUP OF THREE FACTORY DECOYS in various stages of repaint. Fair structural condition. 100-150 *View at on-line catalog*

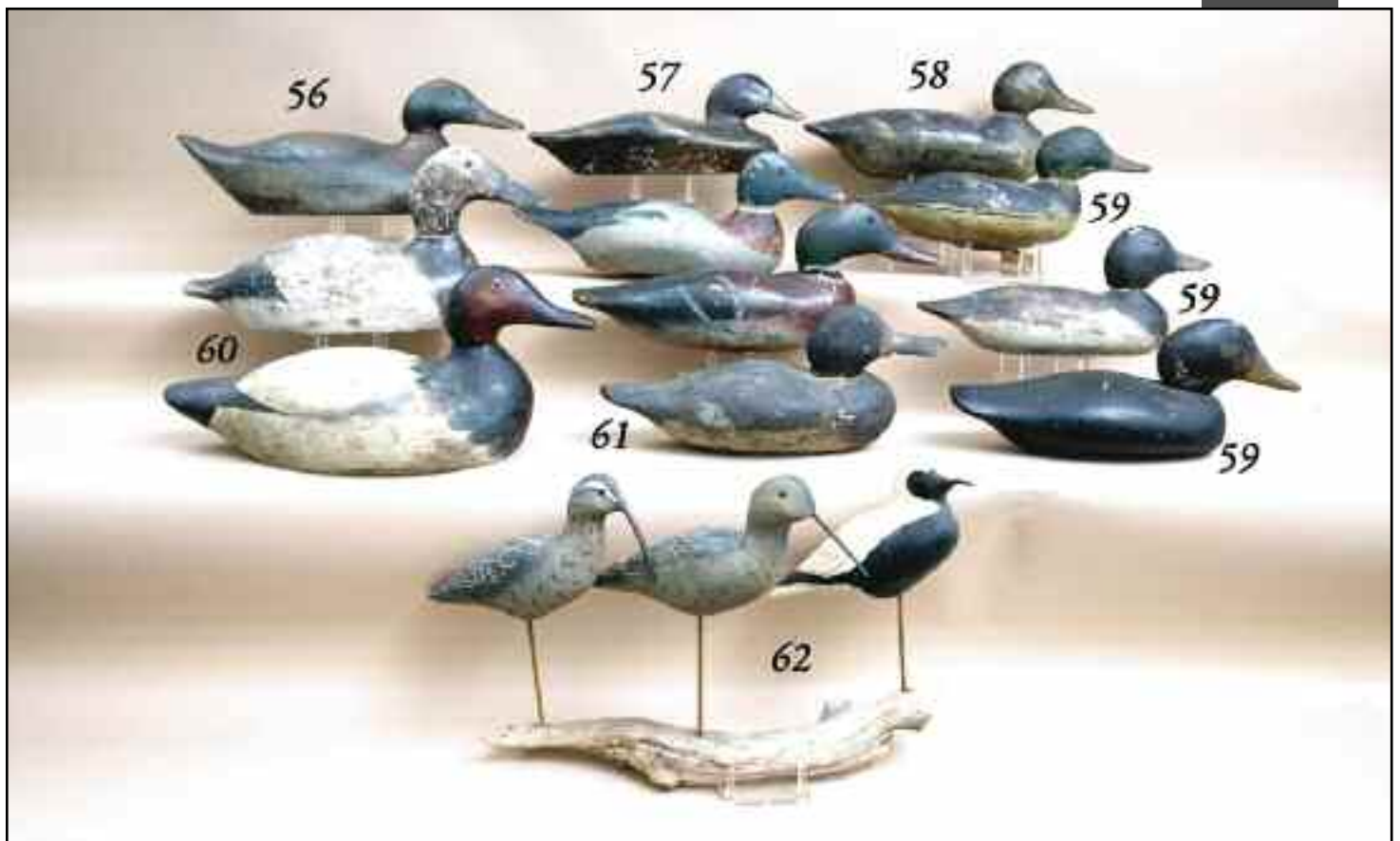
58 VERY EARLY MALLARD HEN by the Mason Decoy Company, Detroit, MI. Weathered original paint with possible minor touch up. Structurally good condition. Retains bottom weight. Together with an early factory BLUEBILL DRAKE sleeper in old working paint and good structural condition. 100-200 *One Shown*

59 GROUP OF THREE FACTORY DECOYS in various stages of repaint and fair structural condition. 100-150 *View at on-line catalog*

60 EARLY CANVASBACK HEN by the Evans Decoy Company, Ladysmith, WI. Old working paint and structurally fair condition with numerous shot scarring. Together with a CANVASBACK DRAKE, possibly Mason, in old working paint, some possibly the original. Good structural condition. Head re-attached. 100-200

61 VERY EARLY BROADBILL HEN attributed to the Dodge Decoy Company, Detroit, MI. Retains very good original paint in out-of-rig condition. Strong breast swirls and body feather work. Very broad bill. Retains glass eyes. Horse-shoe shaped weight by the Haymono Lead Co., Chicago, IL. A rare early decoy. 300-400

62 THREE SHOREBIRDS by the Herter's Decoy Company, Waseca, MN. All in excellent original paint and condition. All appear to have original placement sticks. Mounted on a driftwood base. 100-200





- 63 TWO CROWS** by the Herter's Decoy Company, Waseca, MN. Good original paint showing some wear. Both structurally good. Retain wire placement stands. Both with relief carving on backs. 75-125
- 64 GROUP OF THREE CROWS** all in original paint and very good condition. Two with split tails, one with raised carved wings and fluted tail. Two mounted on wood bases. One is oversized. 100-200
- 65 GROUP OF SEVEN GAME CALLS** consisting of a CH Ditto, Keithsburg, IL, an F.A. Allen, Monmouth, IL, a Fuller's Goose Call, a Mallard Tone, and an Ohman, Neosho, MO, and two unmarked calls. 200-300
- 66 TWO EARLY DECOYS** a MALLARD DRAKE in old working paint and fair structural condition. Chip under bill. Also, a BLACK DUCK, possibly Canada, attributed to Joe Momney, Wallaceburg, Ont., in working paint and good structural condition. Bottom keel. 100-150 One Shown
- 67 GROUP OF FOUR GAME CALLS** consisting of a Lohman, two Olt wood calls and a crow call. Together with two early New Jersey resident hunting license badges, 1936 and 1938. Excellent condition. 75-125
- 68 GROUP OF FIVE DECOY BOOKS** by Henry Fleckenstein, Jr., consisting of *Decoys of the Mid-Atlantic Region*, *Shorebird Decoys*, *New Jersey Decoys*, *Southern Decoys* and *American Factory Decoys*. All with dust covers. All in good condition. 200-300
- 69 GROUP OF EIGHT BOOKS** consisting of *Decoys*, *North America's One Hundred Greatest* by L. Harrell, *Chesapeake Bay Decoys* by R. Richardson, *Collectors Guide to Decoys* by L. and G. Kangas, *The Bird Decoy* by Jonsgard, *Chincoteague Carvers and Their Decoys* by V. and B. Berkey, *American Wildfowl Decoys* by J. Waingrow, *American Bird Decoys* by W. F. Mackey and *The Great Book of Wildfowl Decoys* by J. Engers. All in good condition, some with dust covers. 100-150
- 70 GROUP OF SEVEN BOOKS** consisting of *Mason Decoys* by Goldberger and Haid, *Ward and Bro.*, *Decoy Counterfeiters*, *Decoys of the Atlantic Flyway* by G. Starr, M.D., *Shorebirds* by Levinson and Headley, *Decoys of Lake Champlain* by L. Harrell, *Waterfowl Painting* by B. Veasey and *American Bird Decoys* by W. Mackey, new edition. All in good condition with dust covers. 100-200
- 71 BLACK DUCK** attributed to the Dauntless Decoy Company, Essex, CT. Very old working paint and very good structural condition with separation at neck base. Balsa construction with deep relief-carved wing detail. Retains bottom board and full keel and chain weight. 200-300
- 72 EARLY FACTORY DECOY** in weathered original paint. One glass eye missing. Structurally good. Together with a group of thirteen duck head cut-outs, possibly Delaware River. All in a peach basket. One Shown. 75-125

73 CURLEW by H.V. Shourds, Seaville, NJ. Very full round body and excellent original paint. Structurally sound. Mounted on a driftwood base. 100-150

74 PAIR OF LESSER YELLOWLEGS H.V. Shourds, Seaville, NJ. Excellent original paint and condition. Both signed and dated 1976. Both on a custom base. 100-150

75 FINE TERN by H.V. Shourds, Seaville, NJ. Excellent original paint and structurally fine condition. Deep relief-carved wings and split wing feather tips. Head turned slightly right. Mounted on webbed feet atop an old piling. Signed and dated 2005 on piling. Tern is branded. 200-300

76 BLACK BREAST PLOVER by H.V. Shourds, Seaville, NJ. Excellent original paint and structurally good condition. Very tip of bill damaged. Signed and dated 1976. 75-125

77 PEEP by H.V. Shourds, Seaville, NJ. Near-mint original paint and condition. Signed and dated on base 1987. Together with a FEEDING SANDERLING by H.V. Shourds in near-mint original paint and condition. Signed and dated 1987 on base. 100-200

78 VERY FINE CURLEW by H.V. Shourds, Seaville, NJ. Very good original paint with some sap bleed to breast and lower neck. Structurally very good with deep relief-carved wings and split, open wing tips. Feeding position with head turned slightly right. Branded, signed and dated 2005. 200-300

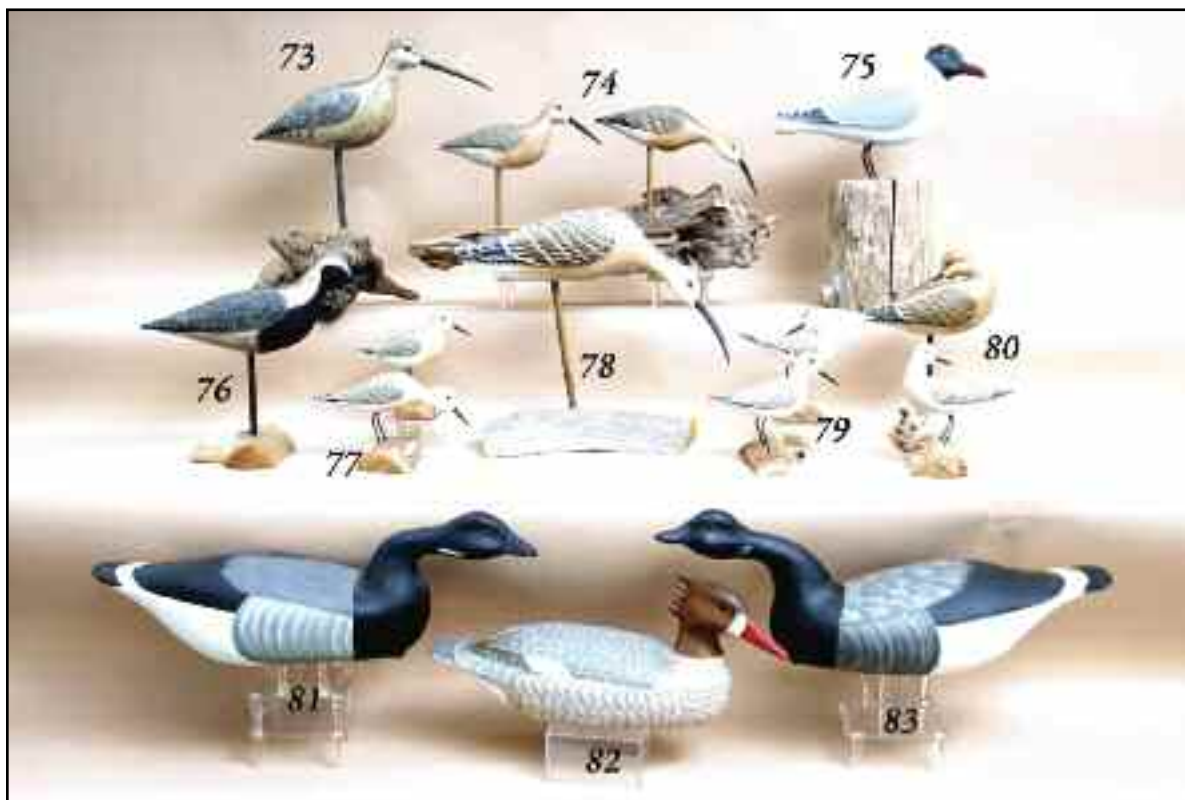
79 TWO PEEPS by H.V. Shourds, Seaville, NJ. One is a sleeper. Both in near-mint original paint and condition. Signed and dated 1987 on bottom. 100-200

80 PREENING YELLOWLEG by H.V. Shourds, Seaville, NJ. Near-mint original paint with fine detail. Structurally excellent with deep relief carved wings and raised wing tips. Signed and dated 2008. Together with a PREENING SANDERLING by H.V. Shourds in near-mint original paint and condition. Signed and dated 1987 on base. 100-200

81 SNAKEY-HEAD BRANT by H.V. Shourds, Seaville, NJ. Excellent original paint and structurally fine condition. Hollow carved with inlet bottom weight. Branded HVS. Signed and dated 1987. 150-250

82 RED-BREASTED MERGANSER HEN by H.V. Shourds, Seaville, NJ. Excellent original paint and unused condition. Hollow carved. Inlet bottom weight. Branded HVS. Signed and dated 1988. 100-200

83 SNAKEY-HEAD BRANT by H.V. Shourds, Seaville, NJ. Excellent original paint and structurally fine condition. Hollow carved with inlet bottom weight. Unusual head position. Signed and dated 1976. 100-200





84 UNUSUAL PREENING BRANT by H.V. Shourds, Seaville, NJ. Near-mint original paint and condition. Hollow carved. Inlet bottom weight. Signed and dated 1987 by maker. Branded HVS. 150-250

85 EARLY CARVED SNEAKBOX MODEL in natural finish, with four carved miniature decoys in natural finish and a carved oar. 75-125

86 FINE COLLECTION OF MINIATURES by Harry V. Shourds, Seaville, NJ. All in excellent original paint and condition. Carved between 1993 and 1995. Group includes pairs of hooded mergansers, widgeon, canvasbacks, mallards, shovellers, wood ducks, American mergansers, eiders, Canada geese, old squaws, a brant, a black duck and a loon. Also, a miniature by Dick Robinson. Together with an antique Coca-Cola wood case with 24 compartments for display. 800-1200

87 PAIR OF HOODED MERGANSERS by H.V. Shourds, Seaville, NJ. Near-mint original paint and condition. Both hollow carved. Inlet bottom weights. Both branded HVS. Signed and dated 1988. 200-300

88 GROUP OF CATALOGS from the Richard A. Bourne Co., Inc. auctions, including the Mackey Collection, from the John Hillman collection. Each with his hand-written price notations. Sessions I and II with numerous autographs of auction attendees. A true piece of decoy history. 50-75

89 GROUP OF EARLY ISSUES OF DECOY WORLD and DECOY MAGAZINE Approximately 28 issues. 50-75

90 FINE PAIR OF MALLARD BOOKENDS probably by the Wildfowler Decoy Company. Excellent original paint and condition. Both with puppy chew to bill tips. Together with a DUNLIN shorebird by H.V. Shourds, Seaville, NJ. Good original paint with some loss of paint to back. Good structural condition with chips to tail and part of bill missing. 75-125

91 BLACK DUCK by H. V. Shourds, Seaville, NJ. Very good original paint with some very minor rubs. Hollow carved, low-head model with inlet bottom weight. Structurally excellent. Branded with a label dated 1966. 100-200

92 EXCEPTIONAL PAIR OF ONE-THIRD SIZE WOOD DUCKS by Harry V. Shourds, Seaville, NJ. Near-mint original paint and condition. Both with primary and secondary wing carving. Both mounted on a driftwood base. Signed and dated '69. 200-300

93 TWO PEEPS by Steve Morey, Tuckerton, NJ. Excellent original paint and condition. Both signed and mounted on wooden bases. 100-125

94 RARE AND UNUSUAL GREBE by H. V. Shourds, Seaville, NJ. Near-mint original paint and structurally fine condition. Exceptional paint feather detail overall. Deep relief-carved wings and overlaid wing tips. Head turned slightly right. Carved with a breathing hole in nostril. Signed and dated 1971. Mr. Shourds' finest work. 200-300

95 FOUR CONTEMPORARY SHOREBIRDS consisting of a YELLOWLEG in antiqued original paint, a feeding YELLOWLEG, by H.V. Shourds, Seaville, NJ, in original paint with sap bleed, and a sleeping YELLOWLEG by Bruce Bieber, in original paint with split tail. Also, a flying YELLOWLEG stamped STEVENS with left wing repaired. 100-150 Three Shown.

96 PREENING BRANT by H.V. Shourds, Seaville, NJ. Excellent original paint showing some shrinkage on underside of tail and lower white sides. Structurally sound. Hollow carved. Inlet weight. Branded on bottom. 200-300

97 AVOCET by Dave Rhodes, Absecon, NJ. Excellent original detailed paint and structurally fine condition. Relief-carved wings, split tail and head turned slightly left. Signed on bottom and dated '05. Fingerprint on underside of tail. 100-150

98 THREE SHOREBIRDS by Jamie Hand, Cape May Courthouse, NJ, consisting of two YELLOWLEGS and a PIPING PLOVER. All in excellent original paint and condition. Split tail carving. All stamped JP HAND on bottom. 100-200

99 YELLOWLEG in good original paint and condition. Together with a FISH DECOY in good original paint. Also, a MINIATURE LOON, in good original paint and condition. 50-75

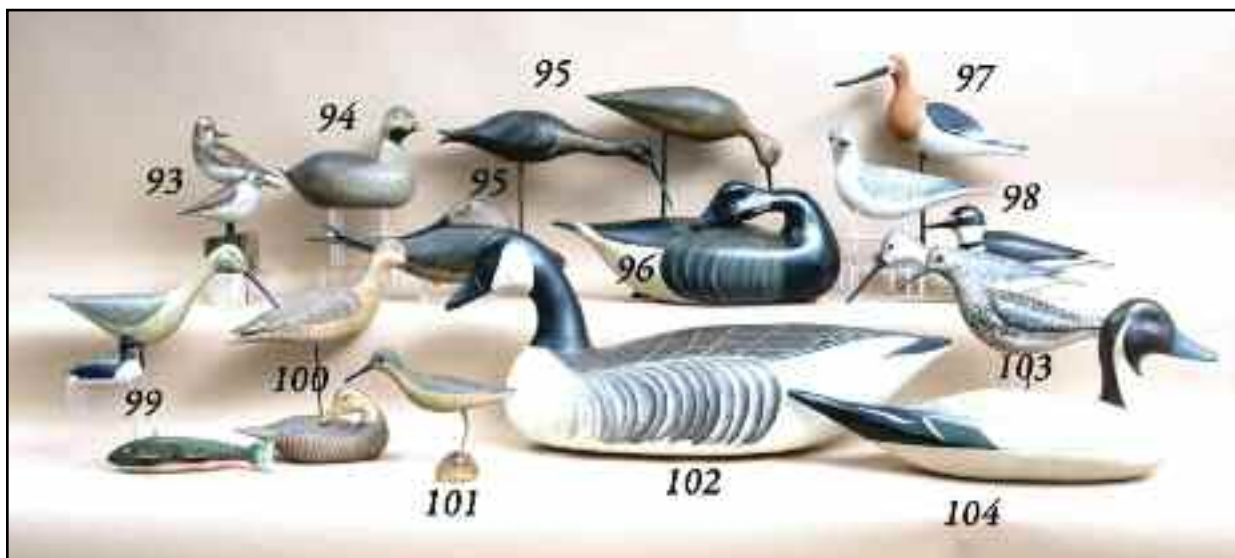
100 CHIP-CARVED YELLOWLEG by H.V. Shourds, Seaville, NJ. Excellent original paint and structural condition. Signed on bottom. Together with a ONE-THIRD SIZE MALLARD HEN PREENER in near-mint original paint and condition. Signed and dated 1987 on bottom. 100-200

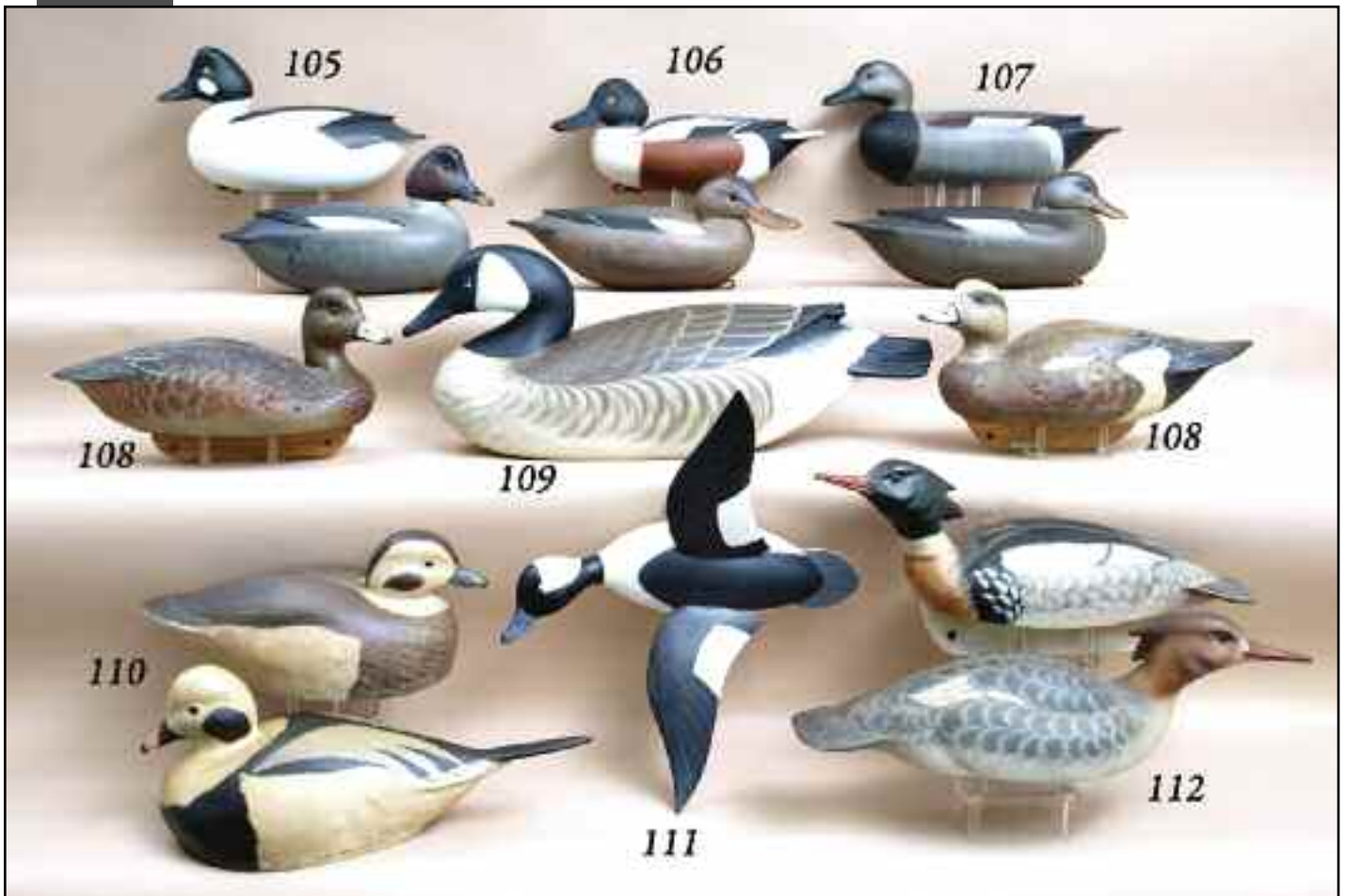
101 EARLY PEEP by the Wildfowler Decoy Company, Pt. Pleasant, NJ. Near-mint original paint and condition. Mounted on a custom wood base. Wire legs. Signed on bottom: *Wildfowler Decoys Painted by Dottie Clayton*. 75-125

102 CANADA GOOSE by Barnegat Bay Decoys, Pt. Pleasant, NJ. Excellent original paint with some shelf scuffs on bottom. H.V. Shourds model. Structurally excellent. Painted by Fredrick C. Brown. 150-250

103 GREATER YELLOWLEG by Steve Morey, Absecon, NJ. Excellent original antiqued paint and structurally fine condition. Deep relief-carved wings with crossed tail tips. Carved M on bottom. 100-125

104 PINTAIL DRAKE by James Lynch. Very good original paint and condition. Special edition created for *Ducks Unlimited*. Signed and branded Ducks Unlimited. 75-125





105 PAIR OF GOLDENEYES by Fredrick C. Brown, Jr., Pt. Pleasant, NJ. Excellent original paint and unused condition. Hollow carved. Bottom pad weights. Both signed and dated 2008. Retain maker's copper identification tag. 300-400

106 PAIR OF SHOVELLERS by Fredrick C. Brown, Jr., Pt. Pleasant, NJ. Excellent original paint and unused condition. Some minor sap bleeding to both. Hollow carved. Bottom pad weights. Both signed and dated 2000. 300-400

107 FINE PAIR OF GADWALLS by Fredrick C. Brown, Jr. Excellent original paint and condition. Very minor area of sap bleed on lower left rear of hen. Both hollow carved with applied bottom weights. Both signed and dated 2007 by maker. Both retain copper identification tags. 300-400

108 PAIR OF WIDGEON by Pete Valkavich, Sr. Both in excellent original paint and unused condition. Structurally very fine with cork bodies and wood bottom boards with full keels. Both signed by the artist and dated 1990 + 91. 200-300

109 OUTSTANDING CANADA GOOSE by noted carver George Strunk, Glendora, NJ. Near-mint original paint and structurally sound condition. Fine painted feather detail and paint blending. Raised crossed wing tips. Broad cupped fluted tail. Carved in the Delaware River manner. Hollow carved. Bottom pad weight stamped G.STRUNK. Signed by carver. 1800-2200

110 PAIR OF OLD SQUAWS by Bob Barrow. Gunning competition models in excellent original paint and structurally good condition. Bottom keel removed on drake, with bottom board loose. Both branded RAB and signed and dated 1987. 200-300

111 RARE FLYING BUFFLEHEAD DRAKE by Jamie P. Hand, Cape May Court House, NJ. Excellent original paint and structurally sound condition. Executed with spread wings, facing left. Branded J.P. HAND on bottom. Eye-screw on back. 300-400

112 FINE PAIR OF RED-BREASTED MERGANSERS by Bob Hand, Sag Harbor, NY. Both with excellent original paint. Both carved with deep relief wings and muscle-toned heads. Very fine intricate painted feather work. The drake with full keel. The hen is signed and dated 1987. 300-500





113 PAIR OF WIDGEON by R. Madison Mitchell, Havre de Grace, MD. Excellent original paint and unused condition. Both with heads slightly turned. Both retain bottom weights, rings and staples. Both signed in electric pencil and dated 1974. 300-400

114 CANADA GOOSE from the Upper Bay, probably the Chestertown, MD, area. Excellent original paint and structurally good condition. Hairline checks to bottom. Retains original weight, ring and staple. 100-200

115 FINE PAIR OF BUFFLEHEADS by Paul Gibson, Havre de Grace, MD. Excellent original paint and unused condition. Both structurally sound. Both with bottom weights, rings and staples. Both signed by maker. 200-300

116 FINE PAIR OF BLUE WING TEAL by Paul Gibson, Havre de Grace, MD. Excellent original paint and structurally fine condition. Unused. Bottom felt. Both signed by the maker. Exceptional Paul Gibson high-head pair. 300-400

117 VERY EARLY UPPER BAY CANADA GOOSE in very old paint, some of which may be the original. Carved with a deep wing separation. Very stylized neck. Bottom weight and rigging intact. Together with a very early BLUEBILL DRAKE, Upper Bay, in old working paint. Structurally very good. Full keel. One Shown. 300-500

118 FINE BLUE WING TEAL DRAKE by R. Madison Mitchell, Havre de Grace, MD. Christmas Model in excellent original paint and structurally sound condition. Head turned slightly left. Fine Mitchell decoy. 200-300

119 NICE EARLY PAIR OF BUFFLEHEADS by Capt. Harry Jobses, Aberdeen, MD. Excellent original paint and condition. Both heads turned slightly right. Both retain weights, rings and staples. Both signed and dated 1976. 100-200

120 EARLY CANVASBACK HEN by R. Madison Mitchell, Havre de Grace, MD. Working paint. Weight and staple removed. Together with a CANVASBACK HEN in old working paint and a BLACK DUCK SLEEPER by Butch Wagener. Original paint, signed on bottom. Weight and staple removed. Twoe Shown. 100-200

121 EARLY MALLARD HEN by Jim Pierce, Havre de Grace, MD. Excellent original paint and condition. Retains bottom keel weight, rigging staple and ring. Stamped P twice and JP on bottom. Gift to the consignor from John Hillman. 100-200

122 CANVASBACK DRAKE by R. Madison Mitchell, Havre de Grace, MD. Very good original paint with minor rubs. Structurally very good condition with minor hairline checks to bottom. Several small dents at bill tip. Retains bottom weight, rigging staple and ring. Signed and dated 1978 by maker. 200-300

123 PAIR OF CONTEMPORARY PINTAILS branded *HMB*, *MAKER*, in excellent original paint and good structural condition. Fine painted feather detail and turned heads. 100-200



124 CANVASBACK DRAKE Upper Bay, in very weathered paint, some of which is original. Very early hand-chopped model, in structurally good condition with a sliver of wood missing from left side. Retains weight and rigging. Together with a very early GOLDENEYE, probably New Jersey, in old working paint. Hollow carved. 100-125 [View at on-line catalog](#)

125 GROUP OF THREE UPPER BAY DECOYS consisting of a RED HEAD DRAKE, in old working paint with replaced head, a RED HEAD HEN in old working paint, and a CANVASBACK HEN in original unused condition. 100-200 [View at on-line catalog](#)

126 THREE DECOYS natural wood, paint removed. Consists of an early Illinois River pintail, a classic Old Saybrook, CT, bluebill, with circular brand and GCK branded on bottom, and a Crisfield, MD, red head, possibly by L. Tyler. 100-200 [View at on-line catalog](#)

127 EARLY PAIR OF HIGH-HEAD CANVASBACKS attributed to Sam Barnes, Havre de Grace, MD. Weathered working paint, worn to the original in areas. Structurally good with two check to the neck of the drake and a check to the back of head. Both retain weights and rigging rings. Very early pair of Upper Bay decoys. 300-400

128 TWO VERY EARLY CANVASBACK DRAKES by R. Madison Mitchell, Havre de Grace, MD. Both in excellent original paint showing minor scuffs. Both structurally sound and in out-of-rig condition. Both heads turned slightly right. Both retain bottom weights, rings and staples. Both branded WMB and B twice. Early fine Upper Bay Mitchells. 400-600

129 EARLY BLUEBILL DRAKE Upper Bay, in very old working paint. Structurally good condition with some separation at neck. CTW carved in bottom. Branded *R.B. Bull*. Together with a WIDGEON DRAKE, probably Madison Mitchell, Havre de Grace, MD. Weathered original paint and good structural condition. Typical neck check and checks on bottom. Both retain weights, rings and staples. 200-300

130 EARLY CANVASBACK DRAKE by R. Madison Mitchell, Havre de Grace, MD. Very good original paint with minor in-use wear. Structurally excellent. Retains bottom keel weight, staple and rigging ring. 200-300

131 PINTAIL DRAKE attributed to Leonard Pryor, Chesapeake City, MD, circa 1900. Restored paint and structurally excellent condition. Two-piece construction. Weights and rigging removed. Very old repair to bill. Very rare decoy by this carver. 200-300

132 FINE PAIR OF RED HEADS from the Upper Bay area. Very good original paint with minor scuffs. Structurally sound. Both retain bottom keel weights, rings and staples. Keels embossed *H.W.I.* 200-300

133 EARLY CANVASBACK DRAKE by R. Madison Mitchell, Havre de Grace, MD, circa 1950. Excellent original paint with shelf scuffs. Structurally very good with hairline check in left mid-neck. Retains weight, ring and staple. Branded WMB and BB on bottom. 200-300

134 UPPER BAY BLUEBILL DRAKE in very good original paint and structurally good condition. Deep relief-carved wing detail. Bottom weight removed. Together with a HIGH-HEAD CANVASBACK, Upper Bay, in good original paint and structural condition. Retains bottom weight. One Shown. 100-150

135 FULL-SIZE STANDING CANADA GOOSE attributed to Charlie Joiner, Chestertown, MD. Excellent original paint and unused condition. Cork body construction. Head in a preening position. Mounted on a custom base. Sold to the consignor by Bobby Coleman and labeled *Charlie Joiner*. 200-300



136 EARLY UPPER BAY MINIATURE RED HEAD DRAKE Near-mint original paint and structurally sound condition. Early carving, probably the Havre de Grace area. 200-300

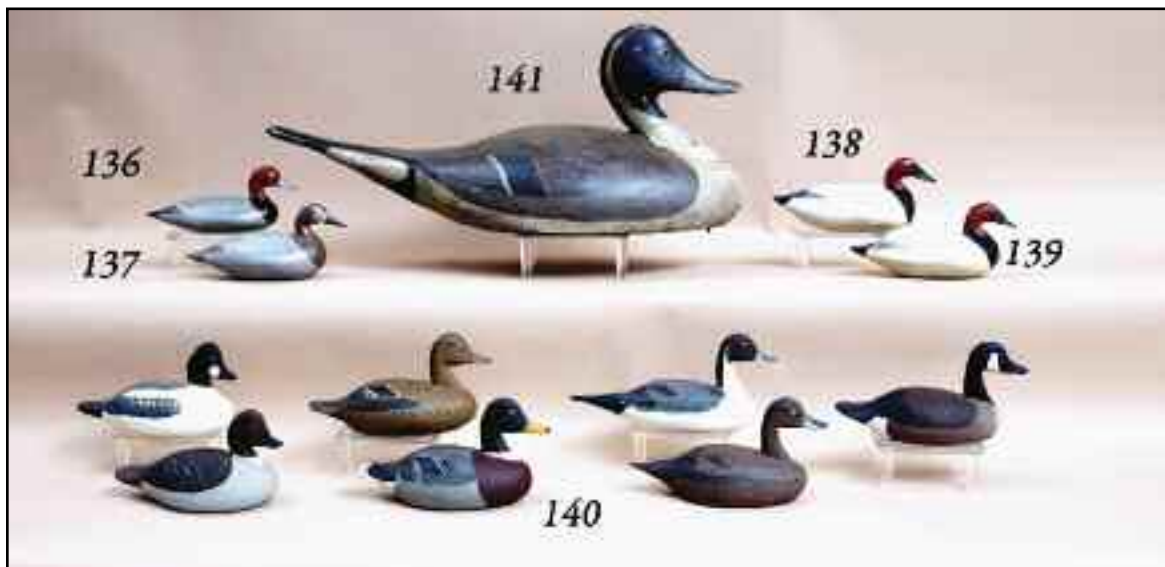
137 EARLY UPPER BAY MINIATURE CANVASBACK HEN Near-mint original paint and condition. Early carving, probably the Havre de Grace area. 200-300

138 EARLY UPPER BAY MINIATURE CANVASBACK DRAKE in mint original paint and condition. Fine feather detail. Probably from the Havre de Grace area. 200-300

139 EARLY MINIATURE UPPER BAY CANVASBACK in mint original paint and condition. Exhibits fine feather detail. Probably from the Havre de Grace area. Tight crack at mid-neck. 100-200

140 FINE SET OF EARLY MINIATURES by Paul Gibson, Havre de Grace, MD, consisting of a pair of MALLARDS, a pair of GOLDENEYES, a pair of PINTAILS, and a CANADA GOOSE. Together with a miniature BLUE HERON, by an unknown carver. All in excellent original paint and condition. 200-300

141 PINTAIL DRAKE by Lloyd Sterling, Crisfield, MD. Excellent structural condition with paint that has been restored. A very folksy lower Bay decoy that is especially rare in this fine condition. Retains original glass doll eyes. 1200-1500





142 VERY RARE WING DUCK from the Upper Bay in extremely old working paint and structurally very good condition. Small area of wood missing from bottom right front. Painted as a canvasback drake. Areas of head paint may be original. Early decoys such as this are very rare in this condition and are discussed in *Chesapeake Bay Decoys* by R. Richardson. This decoy dates possibly to the 1880-1890's. 1200-1800





143 FINE GADWALL by R.W. Smoker, Marion, MD. Near-mint original paint and condition. Very fine painted feather detail. Hollow carved with raised crossed wing tips. High-head turned right. Retains rigging keel. Signed on bottom and dated 2000. 300-500

144 ONE-HALF SIZE FLYING GOOSE in near-mint original paint and condition. Carved with wings extending downward. Elongated neck. Mounted on a custom base. Branded *GREENE, BALTIMORE MD.* 100-200

145 FINE GADWALL by R.W. Smoker, Marion, MD. Near-mint original paint and condition. Very fine painted feather detail. Hollow carved with raised crossed wing tips. Head turned right. Retains rigging keel. Signed on bottom and dated 2000. 300-500

146 FINE PAIR OF WIDGEON by R.W. Smoker, Crisfield, MD. Near-mint original paint and condition. Hollow carved with raised, crossed wing tips. Painted with very fine detailed feather work. Both heads slightly turned. Both with rigging keels. Both signed and dated 1998. Part of a large, unused shooting rig. 600-800

147 CANADA GOOSE possibly Virginia. Very good original paint and structurally sound condition. Carved V wing tips. Bottom weight removed. 75-125





148 FULL-SIZE GUNNING SWAN from Havre de Grace, MD. Excellent original paint and condition. Appears to be unused. Barn-door weighted keel. Very fine example executed in the manner of R. Madison Mitchell. Settled in a custom cradle. See *Chesapeake Bay Decoys* by R. Richardson. 1200-1500





Lots 149 through 156 are being auctioned for the benefit of New Jersey Waterfowlers Association, Inc., whose goal is to promote, protect and preserve wildfowl, wildfowlers and the sport of wildfowling through education and conservation.

149 GREEN WING TEAL DRAKE by Ed O. Braun, Jr. Near-mint original paint and condition. Fine detailed painted feather work. Carved in a restful position. Cork construction with full keel. This decoy is a replica of the 2007 New Jersey Duck Stamp decoy . With presentation base. 500-800

Ed Braun is the owner of DD Decoys and is the former Chairman of Ducks Unlimited and past president of Trout Unlimited. His work has been widely displayed at numerous gunning and decoy shows.

150 OUTSTANDING CANVASBACK DRAKE by Paul Dobrosky, Little Silver, NJ. Replica of the 2005 New Jersey Duck stamp decoy in near-mint original paint and condition. Very fine detailed painted feather work. Detailed carving with broad cupped fluted tail and raised carved wing tips. Retains full bottom keel and is signed by the maker. With presentation stand. 500-800

Paul Dobrosky began carving 30 years ago and has an extensive winning record at the most prestigious carving competitions and shows. He was awarded Best in Show at the Ward Foundation World Championship in 1980, 1981 and 1984, Shooting Stool Competition. He has contributed unselfishly to the New Jersey Waterfowlers Association.

151 HOODED MERGANSER DRAKE by John Potts, Princeton, NJ. Mint original paint and condition. Fine painted detail feather work and relief-carved wings with primary and secondary detail. Broad carved fluted tail. Head is turned slightly right. Signed twice the the maker and displays his carved logo. This decoy is a replica of the decoy in the 2004 New Jersey Duck stamp. With presentation stand. 500-800

John Potts began carving in 1985 and studied under famed Louisiana carver Tan Brunet. Mr. Potts has accumulated more than 600 awards in competitions and at state and national level. He has also been a judge at state and national events and generously contributes his carvings to benefit charitable causes.

152 PINTAIL DRAKE by Clarence Fennimore, Wrightstown, NJ. Mint original paint and condition. Very fine detailed comb-feather and painted feather work. Hollow carved with raised carved wing tips and carved fluted tail in the Delaware River style. Retains bottom pad weight. Signed by artist. This decoy is a replica of the 2003 New Jersey Duck stamp, 20th Anniversary edition. Accompanied with presentation stand. 500-800

Clarence Fennimore began carving in the 80's and uses the traditional hollow cedar style. He was honored as the featured Carver of the Year for New Jersey Decoy Collectors Assoc. annual show and was the featured carver at the Tuckerton Seaport in 2001.

153 EXCELLENT WOOD DUCK DRAKE by Jode Hillman, Mullica Hills, NJ. Fine detailed original paint in near-mint condition. Structurally excellent. Hollow carved with raised wing tips and cupped, carved fluted tail. Head is turned very slightly left with long flowing comb. Retains custom pad weight. Signed by artist. Accompanied by a presentation stand. 500-800

Jode Hillman began his carving career in 1999, leading to the 2006 New Jersey Duck Stamp winner. In addition to the New Jersey waterfowl stamp, his work has been featured in *Decoy Magazine* and *Hunting and Fishing Collectibles* magazine. He was recently awarded *Best in Show* at the 2005 Ocean County Decoy and Art Show.



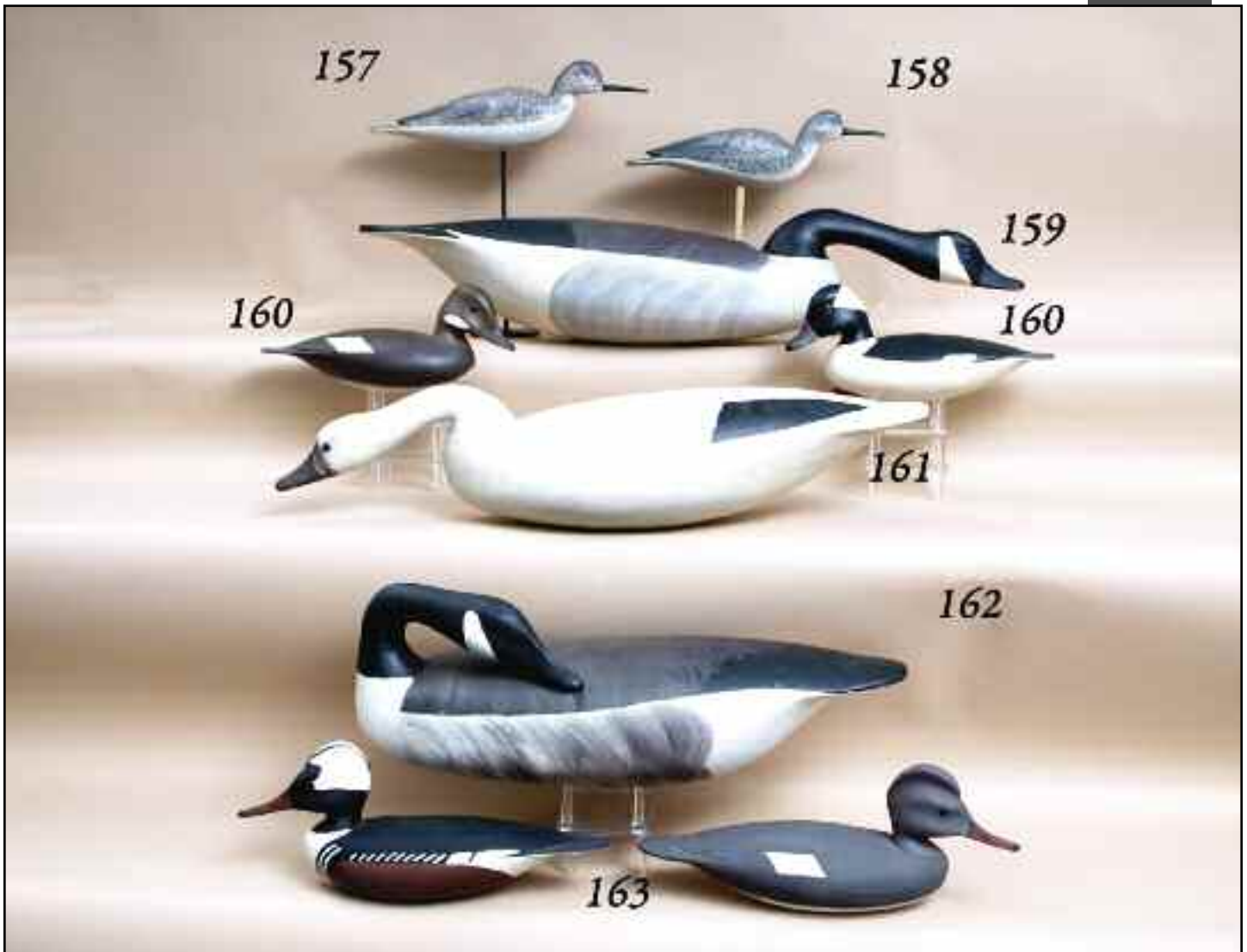


154 PINTAIL DRAKE by Terry McNulty, Riverside, NJ. Near-mint original paint and condition. Fine detailed comb painting with detailed painted feather work. Head is turned slightly right. Maker's brand on bottom. Also signed by maker. 500-800

155 VERY WELL-EXECUTED FLYING BRANT WEATHERVANE by Gary Bell, Brick, NJ. The brant, with outstretched wings with deep carved detail and elongated neck, is mounted above brass directionals and glass ball. The whole, mounted on a large piece of coal. Excellent original paint and condition. A very artistic rendering. 500-800

156 CLASSIC DELAWARE RIVER BLACK DUCK by George Strunk, Glendora, NJ. Near-mint original paint and fine painted feather detail. Hollow carved. Raised carved wing tips and cupped carved fluted tail. Retains bottom pad weight with maker name stamped. Also signed by maker. 500-800





157 GREATER YELLOWLEG by Hurley Conklin, Manahawkin, NJ. Excellent original paint and structurally sound condition. Split-tail carving. Branded *H.C* on bottom. 200-300

158 GREATER YELLOWLEG by Hurley Conklin, Manahawkin, NJ. Excellent original paint and structurally sound condition. Split-tail carving. Signed on bottom of base. 200-300

159 FINE SNAKE-HEAD GOOSE by Hurley Conklin, Manahawkin, NJ. Excellent original paint and condition. Structurally fine, hollow carved. Deep ice groove and carved wing detail. Carved in a snakey-head swimming position. Inlet bottom weight. Branded *H.CONKLIN* on bottom . 800-1200

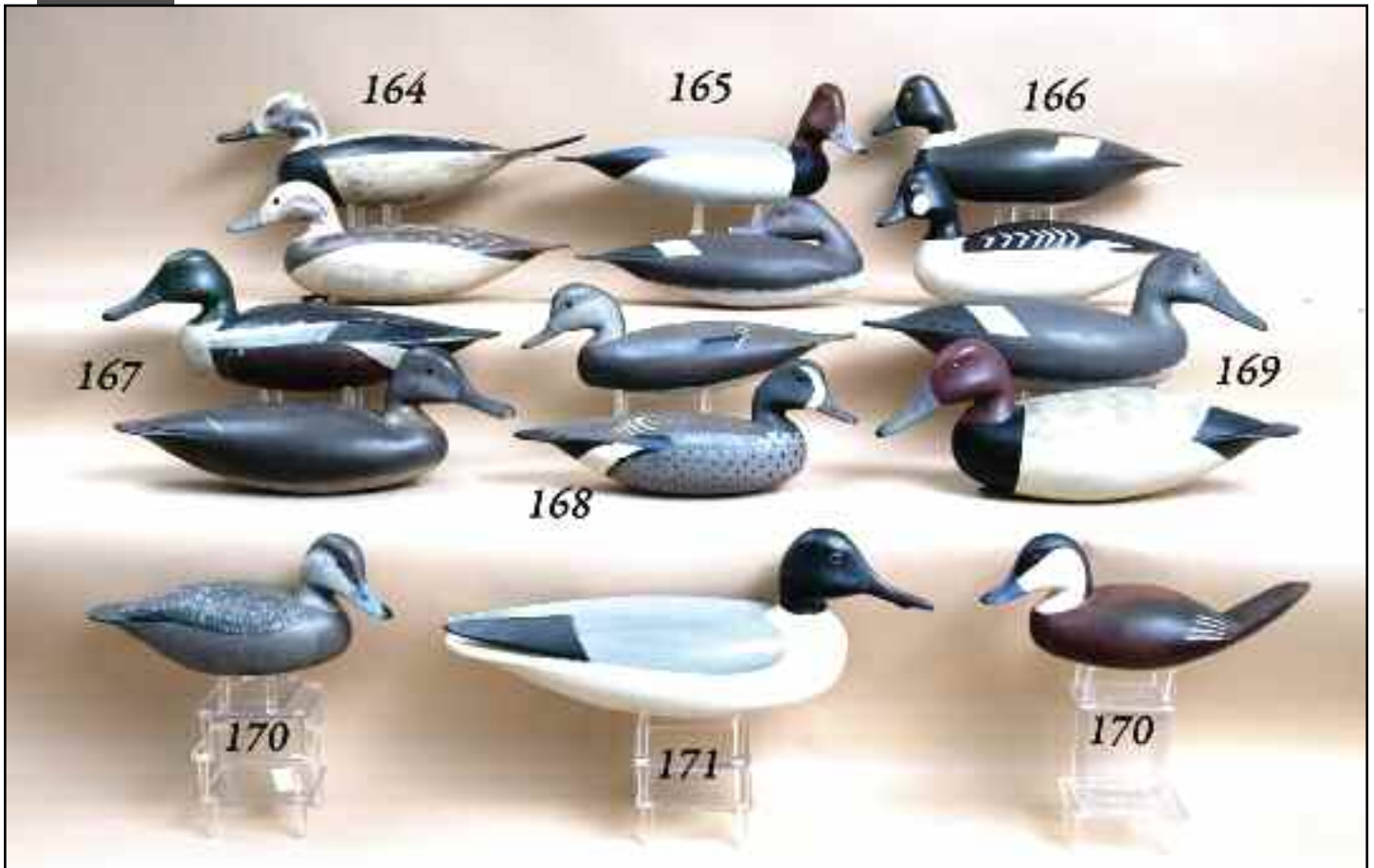
160 PAIR OF BUFFLEHEADS by Hurley Conklin, Manahawkin, NJ. Excellent original paint and structurally fine condition. Both with carved wing tips. Both with heads slightly turned. Hollow construction. Both with round inlet bottom weights. Both branded *H.C*. 600-900

161 RARE SNOW GOOSE by Hurley Conklin, Manahawkin, NJ. Excellent original paint and structurally fine condition. Hollow carved with an ice groove and carved wing detail. Mandibles carved in bill. Inlet weight. Branded *H.CONKLIN*. Notation on bottom: *His first snow goose. H. Conklin Manahawkin.* 1500-2500

162 PREENING GOOSE by Hurley Conklin, Manahawkin, NJ. Excellent original paint with some swirl feather work to back. Structurally very good condition. Head in a preening position. Hollow carved with inlet bottom. Pre-brand model. 600-900

163 PAIR OF HOODED MERGANSERS by Hurley Conklin, Manahawkin, NJ. Both in excellent original paint and structurally sound condition. Drake with some minor sap bleed to underside. Both hollow carved. Both with deep, split head crests and carved wing tips. Both with round inlet weights. Both branded *H.C*. 600-900





164 VERY RARE PAIR OF OLD SQUAWS by Hurley Conklin, Manahawkin, NJ. Very good original paint showing some in-use wear. Both hollow carved with deep ice grooves and carved wing tips. The drake has an elongated split wood tail. Fine structural condition. Both heads turned slightly left. Both with round inset weights. Both branded *H. CONKLIN*. Very fine Conklin decoys. 600-900

165 PAIR OF RED HEADS by Hurley Conklin, Manahawkin, NJ. Very good original paint with some minor sap bleed on hen. Both structurally very good. The hen is a sleeper. Drake's head turned sharply right. Both with carved wing tips. Both branded *H. CONKLIN* on bottoms. 600-900

166 FINE PAIR OF GOLDENEYES by Hurley Conklin, Manahawkin, NJ. Excellent original paint and structurally good condition. Both hollow carved with deep ice grooves and carved wing tips. Heads slightly turned. Both with round inlet weights. Both branded *H.CONKLIN*. Signed and dated 1961. 600-900

167 RARE PAIR OF SHOVELLERS by Hurley Conklin, Manahawkin, NJ. Excellent antiqued paint and structurally fine condition. Hollow carved with deep ice grooves and carved wing tips. Both with slightly turned heads. Both with round inlet weights. Both branded *H.C.* 600-900

168 BLUE WING TEAL PAIR by Hurley Conklin, Manahawkin, NJ. Near-mint original paint and condition. Hollow carved with carved wing detail. Both heads slightly turned. Inlet bottom weights. Both branded *H.C.* 800-1200

169 PAIR OF CANVASBACKS by Hurley Conklin, Manahawkin, NJ. Excellent original paint and structurally sound condition. Both hollow carved with carved wing tips. The drake with comb-painted back. Very full bodies. Both with inlet bottom weights. Both branded *H.CONKLIN*. Formerly in the John Hillman collection and retain his copper staples. 600-900

170 RARE PAIR OF RUDDY DUCKS by Hurley Conklin, Manahawkin, NJ. Excellent original paint and and structurally fine condition. Both with heads very slightly turned. Both signed on bottom. 600-900

171 RARE LAUGHING GULL by Hurley Conklin, Manahawkin, NJ. Excellent original paint and structurally sound condition. Hollow carved with elongated, raised and split-wing carving. Head is turned slightly right. Round inlet bottom weight. Branded *H. CONKLIN*. 600-800



172 PAIR OF RED-BREASTED MERGANSER by Hurley Conklin, Manahawkin, NJ. Excellent original paint and unused condition. Both structurally fine with seven-comb crests. Both heads slightly turned. Carved wing tips. Inlet weights. Both branded *H.CONKLIN*. 600-800

173 VERY EARLY MERGANSER HEN by Hurley Conklin, Manahawkin, NJ. Original unused paint and condition. Some minor shelf scuffs. Pre-brand model. Hollow carved, unrigged. 100-200

174 RARE AND UNUSUAL GREBE by Hurley Conklin, Manahawkin, NJ. Excellent original paint and structurally sound condition. Hollow carved with round inlet bottom weight. Branded *H. CONKLIN* on bottom. 400-600

175 PAIR OF PINTAILS by Harry V. Shourds, Seaville, NJ. Excellent original paint. The hen is in near-mint condition. The drake with a small chip from tip of tail. Both signed on bottom. Both with John Hillman tag stapled to bottom. 300-400

176 PAIR OF RED HEADS by Hurley Conklin, Manahawkin, NJ. Very good original paint and unused condition with minor rubs. Structurally very good. Hen is a preener. Both with ice grooves. Both hollow carved with inlet weights. Both branded *H. CONKLIN* and *ELK*. 400-500

177 RED-BREASTED MERGANSER DRAKE by John Hamilton, Cedar Run, NJ. Excellent original paint and condition. Hollow carved with inlet weight. *JH* stamped on bottom. 100-200

178 EARLY GULL by B. Rutter, Sr. Excellent original paint with some shelf scuffs. Structurally sound condition. Hollow carved with raised, crossed wing tips. Branded *RUTTER SR.* on bottom. 100-200

179 FLATTY CURLEW DECOY SHOP SIGN by Hurley Conklin, Manahawkin, NJ. Excellent original paint and condition. *H. CONKLIN DECOYS* painted on one side. *H. CONKLIN* branded on bottom. 200-300

180 BRANT SILHOUETTE by Hurley Conklin, Manahawkin, NJ. Excellent original paint and condition. Flat, snakey head stick-up. 200-300





181 PAIR OF BLUE WING TEAL by Ron Sabatini, Levittown, PA. Near-mint original paint and structurally excellent condition. Hollow carved with primary and secondary wing detail. Fine pair of Delaware River teal. Signed underside. 200-300

182 PAIR OF OLD SQUAWS by Ron Sabatini, Levittown, PA. Near-mint original paint and unused condition. Hollow carved with relief carved primary and secondary wing feathers. Cupped carved fluted tails. Both heads turned slightly left. Signed underside. 200-300

183 BLUEBILL DRAKE by Babe Sabatini, Levittown, PA. Finely detailed carving in the Shourds manner in fair original paint with some sap bleeding to the breast, back and underside. Structurally sound. 100-200

184 MALLARD HEN Delaware River style, in excellent original paint and structurally fine condition. Raised carved wings and carved fluted tail. Hollow construction. Bottom pad weight and rigging. 75-125

185 PAIR OF OVERSIZED MALLARDS, probably Columbia, PA. Both in good original paint by Bob White, Tullytown, PA. Both structurally very good. Both signed on bottom by Bob White. 200-300

186 PAIR OF FINE BUFFLEHEADS possibly Delaware River, in very good original paint with some sap bleed at mid-back. Fine carved bills. Both hollow and unrigged. Signed and dated 3/86 on bottom 200-300

187 FINE PAIR OF PINTAILS by Vincent Giannetto, Beverly, NJ. Both in excellent original paint and condition. Both hollow carved with deep relief-carved wings and carved fluted tails. Both with heads slightly turned. Drake signed and dated 1984, hen signed and dated 1985. Notation on drake: *From my personal rig and gunned over on the Delaware. Vince.* Both branded. 400-600



188 VERY EARLY GUNNING BLACK DUCK by Bob White, Tullytown, PA. Good original paint and structurally sound condition. Cork body construction with pine bottom board. Very fine paint ticking to head. Bears maker's copper identification tag. According to Bob White, this was one of his first gunning rig decoys. 200-300

189 FINE AND RARE DOVE by Bob White, Tullytown, PA. Near-mint original paint and structurally sound condition. Carved raised wing tips and elongated fluted tail. Snug-head gunning model, signed and dated 1981 on bottom. 800-1200

190 EARLY BLACK DUCK by Bob White, Tullytown, PA. Weathered paint, possibly the original. Cork body construction with bottom board. Fine ticking to head which is turned slightly left. This decoy is from Bob White's early shooting rig. Stamped *RL WHITE* on bottom. 200-300

191 RARE EARLY MALLARD DRAKE by Bob White, Tullytown, PA. Excellent original paint and structurally sound condition. Hollow carved with raised, carved wing tips and broad carved fluted tail and curled tail feather. Bottom weight removed. Retains maker's copper identification tag. Signed and dated 1968 on bottom. According to Bob White, this decoy was part of his early shooting rig. 1500-1800

192 MINIATURE CANVASBACK DRAKE by Bob White, Tullytown, PA. Excellent original paint and structurally sound condition. Head is turned very slightly right. Signed on bottom. 300-500

193 MINIATURE SNAKEY-HEAD CANADA GOOSE by Bob White, Tullytown, PA, circa 1985. Near-mint original paint and condition. See *Floating Sculpture* by Huster and Knight, page 114, for a similar full-size model. Signed on bottom. 300-500

194 MINIATURE CANADA GOOSE by Bob White, Tullytown, PA. Excellent original paint and condition. Very fine Parkertown model, signed and dated 1989 on bottom. 300-500



195 BLACK DUCK by Tom Fitzpatrick, Delanco, NJ. Old working paint by Jess Heissler. Hollow carved with raised wing carving and cupped fluted tail. Hollow carved, low snug-head model. 200-300

196 VERY FINE GREEN WING TEAL DRAKE by D. Cobb. Near-mint original paint and condition. Elaborately carved wing and tail feathers. Head turned slightly right. Signed on bottom. 200-300

197 TWO BLACK DUCKS Delaware River. One with good original paint and in structurally sound condition. Hollow carved with raised wing tips. Retains bottom pad weights and rigging. The second is in old working paint. Hollow carved with raised carved wing detail. Retains bottom weight. 200-300

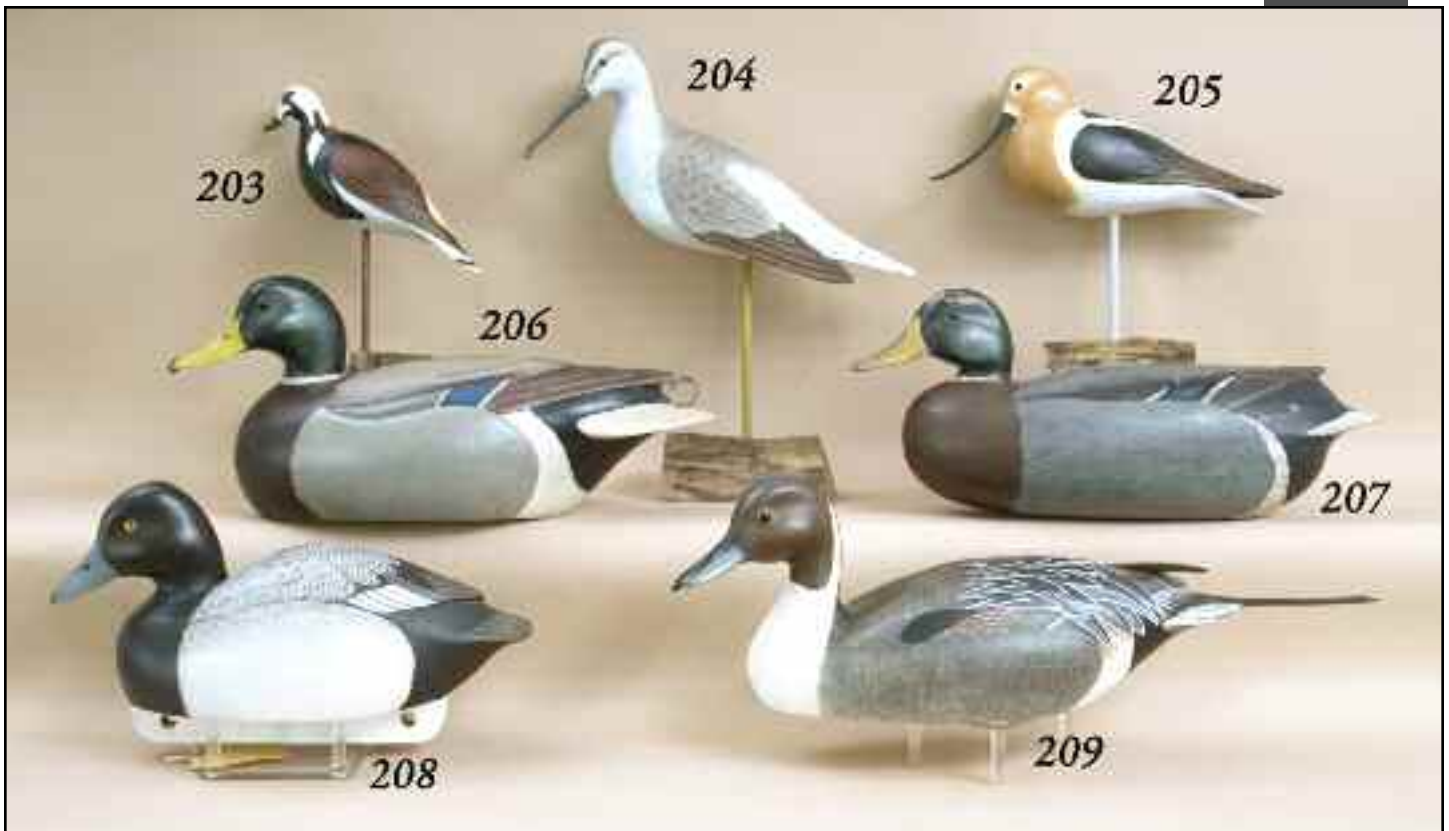
198 BLACK DUCK by Tom Fitzpatrick, Delanco, NJ. Old working paint by Jess Heissler. Hollow carved with raised wing carving and cupped fluted tail. Hollow carved, low snug-head model. 200-300

199 MALLARD DRAKE by R.W. "Turk" Libensperger, Levittown, PA. Excellent original paint with minor gunning scuffs. Hollow carved, structurally sound. Retains strip weight and leather rigging. Signed on bottom by maker. Retains John Hillman identification tag. 200-300

200 MALLARD DRAKE by Richard Anderson, Tullytown, PA. Very good second-coat paint by Turk Libensperger. Hollow carved with raised, carved wing feathers. Bottom weight removed. Retains maker's copper identification tag. 400-600

201 MALLARD DRAKE by Cyril E. Moore, circa 1940. Near-mint original paint and condition. Relief-carved wings, carved wing tips and fluted tail. 100-150

202 VERY EARLY BLACK DUCK by a member of the English family, in weathered working paint and structurally fair condition. Raised carved wing tips and carved fluted tail. Retains glass eyes. 1 5/8" sliver missing from underside of bill. Hollow carved. Bottom weight intact. 200-300



203 RUDDY TURNSTONE by Ron Sabatini, Levittown, PA. Near-mint original paint and condition. Relief-carved wing detail. Cupped, fluted tail. Signed on underside. 100-150

204 LONG-BILLED DOWITCHER by Ron Sabatini, Levittown, PA. Near-mint original paint and condition. Relief-carved wings with carved feather detail. Cupped fluted tail. Head turned slightly left. Signed on bottom. 100-200

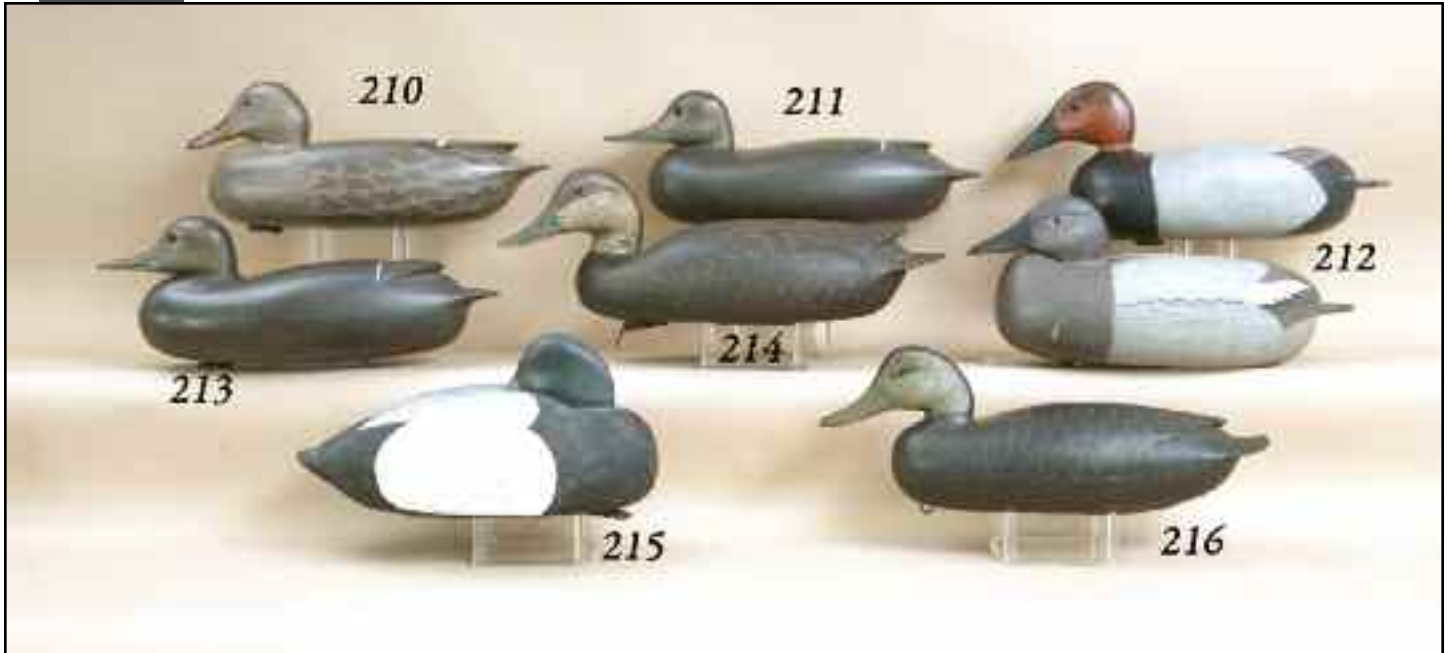
205 FINE AVOCET by Ron Sabatini, Levittown, PA. Near-mint original paint and condition. Carved wing feathers crossed at tips. Cupped fluted tail. Signed on bottom. 100-150

206 FINE MALLARD DRAKE by Ron Sabatini, Levittown, PA. Near-mint original paint and unused condition. Relief-carved wing detail with secondary layered wing tips and cupped fluted tail. Head turned slightly left. Hollow carved and never rigged. Early fine Delaware River decoy. Signed on underside. 300-500

207 MALLARD DRAKE by Richard Anderson, Tullytown, PA. Good working second coat by Turk Libensperger. Some flaking to head crest. Hollow carved with raised wing carving. Bottom weight removed. Retains maker's copper gunning tag. 400-600

208 FINE BLUEBILL DRAKE by John McLoughlin, Bordentown, NJ. Excellent original paint and structurally fine condition. Primary and secondary relief carving. Carved and fluted tail. Head turned slightly left. Full gunning keel. Signed and dated 1975 on bottom. 800-1200

209 FINE PINTAIL DRAKE by John McLoughlin, Bordentown, NJ. Excellent original paint and good structural with repair at mid-neck. Competition gunning model with raised, crossed carved wing tips, elongated crossed sprig tail and fluted tail feathers. Hollow carved. Keel removed. Signed twice by maker. 800-1200



210 EARLY MALLARD HEN by John Baker, Edgely, PA, circa 1940. Near-mint original paint and unused condition. Hollow carved with raised carved wing tips and carved fluted tail. Maker's signature stamped in bottom. 200-300

211 BLACK DUCK by John Baker, Bristol, PA. Near-mint original paint and unused condition. Hollow carved with raised wing tips and fluted tail. Low-head content model. Retains the artist's stamped weight and rigging on bottom. 500-700

212 EARLY PAIR OF CANVASBACKS by John Baker, Edgely, PA. Excellent original paint with very minor shelf scuffs. Structurally excellent. Hollow carved. Fine comb painting. Both weights removed. Maker's signature stamp on bottom. 400-600

213 BLACK DUCK by John Baker, Bristol, PA. Near-mint original paint and unused condition. Hollow carved with raised wing tips and fluted tail. Low-head content model. Retains the artist's stamped weight and rigging on bottom. 500-700

214 FINE AND EARLY BLACK DUCK by Joe Morgan, Tullytown, PA. Excellent original paint and structurally sound condition. Raised, crossed wing tips. Head turned slightly left. Retains bottom weight and rigging. Hand-written notation on bottom: "Last time hunted over on the Delaware River off Bordentown, N.J. Joe Morgan 10-17-85." See *Floating Sculpture* by Huster and Knight, page 94. 1200-1500

215 BLUEBILL DRAKE SLEEPER attributed to Jim Birch, Trenton, NJ. Excellent original paint and condition. Retains bottom pad weight and leather rigging. 50-75

216 EARLY CLASSIC BLACK DUCK by John English, Florence, NJ, 1852-1915. Excellent working paint by Tom Fitzpatrick, Delanco, NJ. Excellent structural condition. Hollow carved. Retains original bottom pad weight. Branded R.A. STOCKTON. One of the series of decoys from the Stockton rig that is referred to in *Floating Sculpture: Decoys of the Delaware River*, by H. Huster and D. Knight, a classic example shown on pg. 60. 800-1200



217 RARE AND VERY FINE BLUE WING TEAL DRAKE by Caleb R. "Reg" Marter, Burlington, NJ. Near-mint original paint and structurally excellent condition. Two small flakes of paint above left glass eye. Deep relief-carved wings and broad carved fluted tail. Fine detailed feather paint overall. Hollow carved, unrigged and unused. Retains maker's metal identification tag. Stamped on bottom twice CR MARTER BURLINGTON, NJ. An extremely fine Delaware River teal in near-mint condition. See *Floating Sculpture* by Huster and Knight, pages 85 - 87. 1500-2500

218 RARE AND VERY FINE GREEN WING TEAL DRAKE by Caleb R. "Reg" Marter, Burlington, NJ. Near-mint original paint and structurally excellent condition. Tiny flake above the right eye. Deep relief-carved wings and broad carved fluted tail. Fine detailed feather paint overall. Hollow carved, unrigged and unused. Retains maker's metal identification tag. Stamped on bottom once CR MARTER BURLINGTON, NJ. An extremely fine Delaware River teal in near-mint condition. See *Floating Sculpture* by Huster and Knight, pages 85 - 87. 1500-2500



219 EXTREMELY RARE PINTAIL DRAKE by Tom Fitzpatrick, Delanco, NJ. Very strong original dry paint. Structurally very good. carved in a low-head position with a mid-neck crack. Hollow carved. Retains original eyes. Carved wing tips and an elongated sprig tail. Part of a shooting rig recently found in a New Jersey residence on the Delaware River. 1200-1500





220



220 detail

220 RARE PINTAIL DRAKE by Tom Fitzpatrick, Delanco, NJ. Excellent original dry paint and structurally fine condition. Hollow carved with raised wing tip carving and elongated sprig tail. Retains original eyes, bottom weight and rigging. An exceptional early Delaware River rarity. Recently found in a gunning rig on the Delaware River. 1500-2500





221 PAIR OF GREEN WING TEAL by John Holloway, Florence, NJ, circa 1960. Fashioned in the Barnegat Bay manner. Both in very good original paint with some minor in-use wear. Both hollow carved with inlet weights. 200-300

222 VERY FINE PAIR OF CANVASBACKS by Charlie Kovacs, Roebling, NJ. Near-mint original paint and structurally excellent condition. Both with carved wing tips and broad carved fluted tails. Both with low-head positions. Both hollow carved with full gunning keels. Both branded. 300-400

223 FINE PAIR OF RUDDY DUCKS, Tuckerton, NJ. Both in excellent original paint with minor scuffs. Excellent detailed feather work. Structurally sound condition. Both signed on bottom with maker's sticker. 200-300

224 FINE PAIR OF CONTEMPORARY GREEN WING TEAL, branded *HJB*, *Maker*, in excellent original paint and good structural condition. Fine painted feather detail and turned heads. 100-200

225 FINE BUFFLEHEAD, possibly Delaware River, in good original paint and structurally sound condition. Paint exhibits very fine feather work on rear half of back. Hollow carved. Weight removed. Stamped D.R. twice. Paint preserved with a coat of shellac. Together with an old BLUEBILL by the Wildfowler Decoy Company in old working paint. Also, a SWIMMING MALLARD DRAKE, New Jersey, in good original paint and unused condition. Hollow carved. Branded ROESCH. 100-200

226 ONE-QUARTER SIZE FLYING CANADA GOOSE in excellent original paint and condition. Made as a hanger. 50-100



227 PAIR OF OVERSIZED HOODED MERGANSERS by Paul Arness, King City, CA. Excellent original paint and structurally sound condition. Made as stick ups. Both with split tail carving. Both heads slightly turned. 100-200

228 FLYING RED HEAD DRAKE in original antiqued paint and structurally fine condition. Outstretched wings. Atop a custom base. 75-125

229 CURRITUCK-STYLE BLACK DUCK by "Hurricane" Pete Peterson. Excellent original paint and unused condition. Hollow carved with foundry weight and rigging intact. Branded PETE on bottom. See *Hunting and Fishing Collectibles*, July-August 2009, page 29, for an article by Rod Taylor and photograph of rignate. 200-300

230 RED-BREASTED MERGANSER DRAKE by Frank Dobbins, Jonesport, ME. Excellent original paint and structurally sound condition. Fine crest carving. Unused. Signed on bottom. 100-200

231 PLOVER carved in the manner of William Bowman. Antiqued original paint and good structural condition. Split tail carving with oak bill. Mounted on a custom base. 100-200

232 SWAN by Capt. Chip Allsop, Bay Head, NJ. Excellent original paint with minor scuffs and structurally excellent condition. Deep ice groove. Graceful curved neck carving and detailed head. 300-400

233 PAIR OF GREEN WING TEAL by "Hurricane" Pete Peterson, Cape Charles, VA. Both in excellent original paint. The drake in excellent structural condition. The hen with check at mid-neck. Both with heads turned slightly left. Both retain keel weights and rigging. Both branded PETE. Both dated 1979. Both with John Hillman collection staple. 200-300





233-A LIFE-SIZE BLUE JAY by Birdhug Studio, Rosendale, NY. Near-mint original paint and condition. Fine carved detail overall. Mounted atop a custom base. Signed on bottom. 200-300

234 SANDPIPER by Irwin Brothers. Excellent original paint and condition. Detailed wing and feather carving. Mounted on a carved and painted clam shell. Signed and dated 1993 on bottom. 50-75

235 GREEN KINGFISHER by Birdhug Studio, Rosendale, NY. Near-mint original paint and condition. Excellent carved detail. Mounted atop a custom base. Signed on bottom .200-300

236 BELTED KINGFISHER by Birdhug Studio, Rosendale, NY. Near-mint original paint and condition. Fine carved detail overall. Mounted on a custom wood base. Signed on bottom. 200-300

237 FULL-SIZE ROBIN RED BREAST by Birdhug Studio, Rosendale, NY. Near-mint original paint and condition. Very fine detailed feather carving overall. Mounted on a custom base. 100-200

238 RED-BREAST ROBIN by R. Waller. Excellent original paint and structurally good condition. Excellent carving to primary and secondary wings. Mounted on a custom base. Signed on bottom and dated 1978. 100-150

239 SANDPIPER in excellent original paint and structurally good condition. Fine overall carved detail. 75-100

240 ONE-QUARTER SIZE WOOD DUCK by Herb Daisey, Chincoteague, VA. Excellent original paint and condition. Together with a ONE-QUARTER SIZE WHITE HERON by Herb Daisey, in excellent original paint and condition. Both signed on bottoms. 100-150

241 FINELY EXECUTED RUDDY TURNSTONE by Ray Schill. Excellent original paint and condition. Elaborate wing and tail carving. Head turned sharply right. Mounted on a custom base. Signed by the maker. 100-150

242 MARSH WREN by Yaoming Li. Near-mint original paint and finely carved detail. Carved with an open calling mouth. Mounted on a custom wood base. 100-200

243 GREATER YELLOWLEG by Harry McChesney. Excellent original paint and condition. Fine overall carving detail. Signed and dated twice on bottom. 75-125

244 TWO SHOREBIRDS, a Phalarope by Marie Staffar and a Least Sandpiper by Ray Schill. Both in excellent original paint a structurally fine condition. Both mounted on custom base. Both signed. 100-200 One Shown

245 TWO SHOREBIRDS by Harry V. Shourds, Seaville, NJ. Very early carvings, both in very good original antiqued paint. Structurally sound condition. One signed by maker. 75-125 One Shown



246 TWO SHOREBIRDS by Dave Rhodes, Absecon, NJ. One is a Ruddy Turnstone and one is a Snipe. Both in antiqued original paint and structurally sound condition. Both signed under tail. 100-150

247 STANDING YELLOWLEG by Harry Shourds, Seaville, NJ. Excellent original detailed feather paint by Dave Rhodes. Structurally sound condition. Mounted on yellow wire legs atop a custom base. Signed by both artists and dated 1966. 100-200

248 FINE HOODED MERGANSER DRAKE by Wayne Baldwin. Near-mint original paint and good structural condition. Elaborate feather carving and detail. Small chip to feather in tail. Repair to one tail feather. 100-200

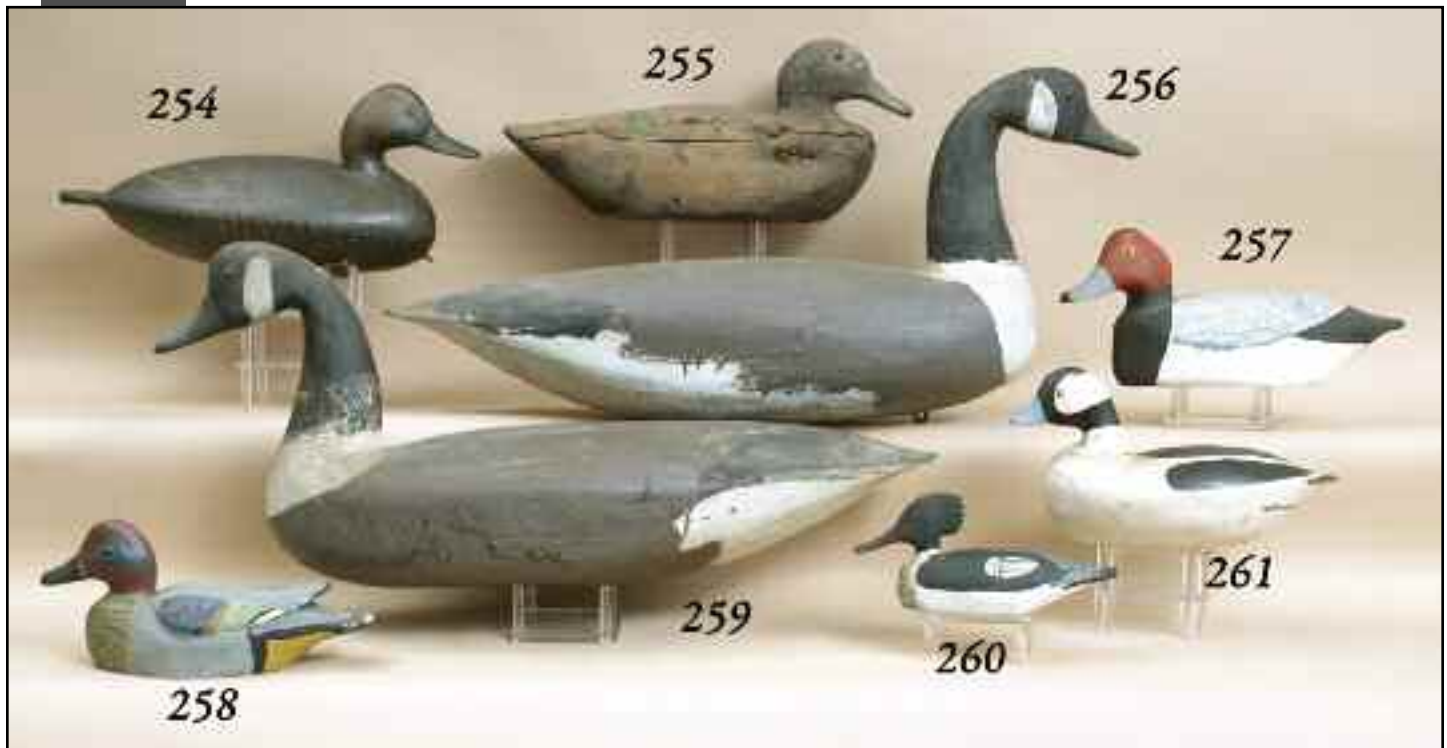
249 THREE BEACH BIRDS by Dave Rhodes, Absecon, NJ. All with relief-carved wing and split tails. Original antiqued paint. Mounted atop custom bases. All signed by artist under tails. 100-150

250 THREE SNIPE DECOYS by Dave Rhodes, Absecon, NJ. All with very good original paint. Structurally good condition. All with wing detail. All mounted on custom bases. All signed by maker. 100-200

251 TWO BEACH BIRDS by Ramon Herrmann, Villas, NJ. Excellent original paint and structurally sound condition. Split tail carving. Both mounted on custom bases. Both signed on bottom. 100-150

252 TWO BEACH BIRDS by Ramon Herrmann, Villas, NJ. Excellent original paint and structurally sound condition. Split tail carving. Both mounted on custom bases. Both signed on bottom. 100-150

253 FINE DECORATIVE YELLOWLEG by Ray Schill. Near-mint original paint and structurally excellent condition. The carving exhibits the bird's head looking back with one wing spread. Wings are elaborately carved with multiple layered feathering and carved wing tips. Signed on bottom of custom base. 200-300



254 BLACK DUCK by Ira Hudson, Chincoteague, VA. Old working paint, possibly by Hudson. Structurally very good with a very small loss of filler to left side of neck at body. Chip-carved tail. Retains bottom weight and rigging staple. 1500-1800

255 BLACK DUCK, possibly Cobb Island, VA. Very weathered working paint. Structurally fair condition with stress cracks. Head is inlet into bottom. *SPR* and *JF* are carved in bottom. 200-300

256 RARE CANADA GOOSE by Charles Birch, Willis Wharf, VA. Very old working paint and structurally good condition. Check in upper part of head. Retains original inset bill. Bottom weights removed. Retains original tack eyes. For similar examples see *Southern Decoys* by H. Fleckenstein, pages 133-136. 500-800

257 EARLY RED-HEAD DRAKE by Miles Hancock, Chincoteague, VA. Excellent original paint and unused condition. Head turned slightly left. Signed and dated June 14, 1967 on bottom. 200-300

258 RARE EARLY GREEN WING TEAL DRAKE by Miles Hancock, Chincoteague, VA. Excellent original paint and unused condition. Unusual relief-carved wings with raised, carved crossed wing tips and broad, spread fluted tail. Faint signature and date on bottom. 200-300

259 CLASSIC CANADA GOOSE by Charles Birch, Willis Wharf, VA. Very old working paint with some possibly original. Structurally very good with bottom weights removed. Retains original inset bill and original tack eyes. 500-800

260 VERY EARLY ONE-QUARTER SIZE RED-BREASTED MERGANSER by Miles Hancock, Chincoteague, VA. Excellent original paint and structurally very good condition with slight separation where neck meets body. Carved crest. Maker's stamp on bottom twice. 100-200

261 BUFFLEHEAD DRAKE, possibly Virginia. Appears to be original paint, unused condition. Hollow carved with some paint loss at seams. Dainty stylized decoy. 100-200



262 EARLY BRANT from North Carolina in very weathered paint and structurally good condition. Numerous shrinkage cracks. Nicely stylized carving made as a floater and stick-up. Retains old rusted bottom weight. 200-300

263 VERY EARLY RED-BREASTED MERGANSER DRAKE, possibly Chincoteague, VA. Weathered original paint. Structurally good condition with cracks in neck and head. Retains deep wood keel with inlet weight. *J McK* carved in bottom. 200-300

264 VERY EARLY CANADA GOOSE, probably Virginia. Old working paint and structurally very good condition. Stylized curved neck. Carved V tail and large inlet pad weight. Retains bead eyes. Cork body construction. 100-200

265 RED-BREASTED MERGANSER DRAKE, Chincoteague, VA, similar to the work of Miles Hancock. Very good original paint showing mild wear. Structurally very good. Deep comb carving. Head turned slightly left. Small chip from comb. Together with a **LARGE CURLEW** attributed to Delbert "Cigar" Daisey, Chincoteague, VA. Excellent original paint and good structural condition. Check to left side of body. Repair at mid-bill. 300-400

266 VERY EARLY AMERICAN MERGANSER DRAKE possibly by Miles Hancock, Chincoteague, VA. Very good original paint showing some wear to the bill and edges. Structurally very good with small loss to left side of tail. Very good feather detail overall and long flowing crest. Hairline crack at base of bill. 200-400

267 EARLY RED HEAD DRAKE from North Carolina. Very old working paint. Large solid model in good structural condition. Retains layered pad weights. 300-400

268 VERY EARLY BLUEBILL, possibly North Carolina, in very old working paint and structurally fair condition with some losses and check down length of back. Branded *AC HAND*. Together with a **BLACK DUCK**, possibly Virginia, in old working paint. Structurally fair condition. Branded *AC HAND* twice. Also, a **SCOTER**, repainted with losses. 75-125 One Shown

268A THREE MINIATURE DECOYS by Miles Hancock, Chincoteague, VA, consisting of a BLACK DUCK, with raised, relief-carved wings, a BLUEBILL DRAKE and a REDHEAD DRAKE. All in original paint and structurally sound condition. All signed, redhead and bluebill dated 1967. 200-400

269 MINIATURE STANDING SWAN by J.F. Roberts, in excellent original paint and structurally fine condition. High-head model. Mounted on a carved and painted base. Signed ROBERTS. 100-200

270 PAIR OF MINIATURE WOOD DUCKS by Ron Sabatini, Levittown, PA. Near-mint original paint and condition. Split-tail carving. Both signed on bottom. 100-150

271 PAIR OF MINIATURE GEESE by Miles Hancock, Chincoteague, VA. Both in excellent original paint and structurally sound condition. One is a preener. Both with raised relief-carved wings. Both signed on bottoms. One dated 1967. 200-400

272 MINIATURE CALLING SNOW GOOSE by J.F. Roberts. Excellent original paint and condition. Open bill in a calling manner. On a driftwood base. 100-200

273 MINIATURE QUAIL in excellent original paint and good structural condition. Some crazing to white areas. Mounted on a wood base. Together with a MINIATURE WOOD DUCK DRAKE, cast composition, by Jett Brunet. 50-75

274 MINIATURE CURLEW, probably Chincoteague, VA. Very early carving in very good original paint and structurally good condition with part of one crossed wing tip missing. Original inlet bill. 100-200

275 MINIATURE PAIR OF MALLARDS by Miles Hancock, Chincoteague, VA. Very early pair with raised, carved relief- wings and carved fluted tails. Both signed on bottoms. 200-300

276 TWO MINIATURE CARVINGS by J.F. Roberts, a WIDGEON DRAKE and a LOON. All in excellent original highly detailed painted feather work. All structurally excellent. All with a thin coat of shellac. 100-200

277 TWO VERY EARLY MINIATURE MALLARD DRAKES by J.F. Roberts. Excellent original detailed feather paint and good structural condition. Both retain paper labels on bottom. 100-200

278 EARLY MINIATURE BLACK DUCK, probably Virginia, in very good original paint with minor paint chips to breast, bill and head crest. Structurally very good with a check at mid-neck. Two-piece dowelled construction. Scratch-feather painting. Similar to the Willis Wharf area carvers. 200-300

279 EARLY MINIATURE RED-BREAST MERGANSER DRAKE in excellent original paint and fine structural condition. Fine painted feather detail. Raised wing tips. An exceptional early miniature. Together with a MINIATURE GREEN WING TEAL DRAKE. Early carving, possibly Virginia, in excellent original paint and condition. Carved, raised split tail and wing tips. Outstanding miniatures! 200-300

280 FINE PAIR OF ONE-QUARTER SIZE HOODED MERGANSERS by David B. Price, Havre de Grace, MD. Near-mint original paint and condition. Very fine painted feather detail. Both heads slightly turned. Both signed and dated 1971 on bottoms. 100-200

281 TWO VERY EARLY MINIATURE CARVINGS by J.F. Roberts. Excellent original detailed feather paint and condition. Group consists of a BLUEBILL DRAKE and a LOON. All with paper labels on bottom. 100-200

282 TWO MINIATURE STANDING MALLARDS by J.F. Roberts. Both in excellent original paint and structurally good condition. One with partial loss to tail feather curl. One is a sleeper. Both on custom bases. One signed ROBERTS on base. 100-200





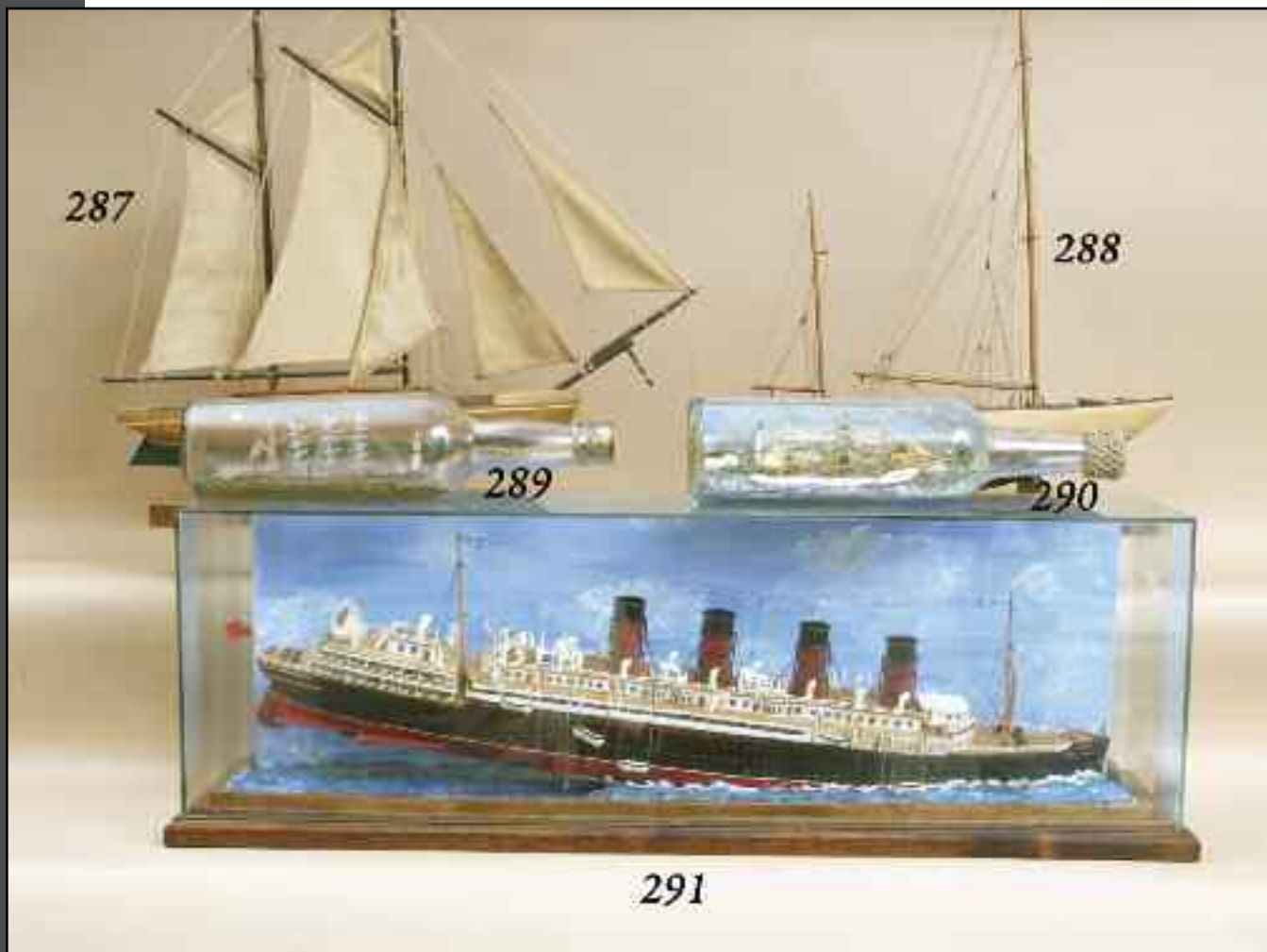
283 FINE ETCHING (DRY POINT) by Roland Clark, titled *Chincoteague Marshes*. Excellent condition with three very small spots of foxing. Full margins. Image size is approximately 5" x 7". Signed LR with hand-written title notation in center margin. Personalized notation in lower border from the artist. 800-1200

284 VERY FINE ETCHING (DRY POINT) by Roland Clark, titled *Cap'n Billy's Rig* depicting two hunter's and their layout rig. Especially fine condition, from the edition of 75. Signed LR, with caption in pencil below center. Margins very slightly trimmed. Image size is approximately 10 7/8" x 14 3/4". An exceptionally fine and rare work by this artist. 3500-4500

285 FINE ETCHING (DRY POINT) by Roland Clark, titled *The Blind*. Very fine impression with very minor foxing at edges, depicting two hunters and a group of flaring ducks. Full margins. Image size is approximately 8 1/2" x 12". From the edition of 75. Signed LR with hand-written title notation in center margin. 1500-2500

286 VERY EARLY PAIR OF MINIATURE RED-BREASTED MERGANSERS, probably New Jersey, in excellent original paint and structurally fine condition. Both with three carved combs to head. Very early, possibly circa 1910-1920. Extremely fine and rare pair. 500-800





287 GROUP OF THREE SAILING MODELS. The first is a twin mast, plastic, fair condition with some loose rigging, a twin mast fishing yawl, full sail, with some loose rigging, and a cape dory, approximately 7". 50-75 One Shown

288 GROUP OF SAILING VESSELS consisting of two natural finish sailboats and a hand-made deep keel sail boat in good condition with several rigging lines loose. Overall length is 12 1/4". 100-125 One Shown

289 FINELY CRAFTED SHIP IN A BOTTLE with a background landscape, lighthouse and buildings. Probably European. Square-rigger at dock. 75-125

290 FINELY CRAFTED SHIP IN A BOTTLE with a background landscape, lighthouse and windmill. Probably European. Square-rigger, Antje, under sail. 75-125

291 FINE SHIP MODEL OF THE LUSITANIA depicting the ship moments before sinking. A very detailed rendering with forward and aft rigging masts supported by cables. Four stacks for four engines that propel the vessel. Some of the life boats are deployed and the stern is out of the water. This model is constructed primarily of copper. Mounted in a plexi-glass custom case with painted background. Overall length is approximately 27 1/2". Structurally excellent. 500-800

292 OUTSTANDING WATERCOLOR by Gerard Rutgers Hardenbergh, Bay Head, NJ, depicting a family of nine quail foraging for food in tall sedge grass, probably near Barnegat Bay. Interesting detailed painted feather work. Signed LL and dated 1883. Framed and glazed. Image size approximately 15" x 20". An outstanding work by this artist. 1500-1800

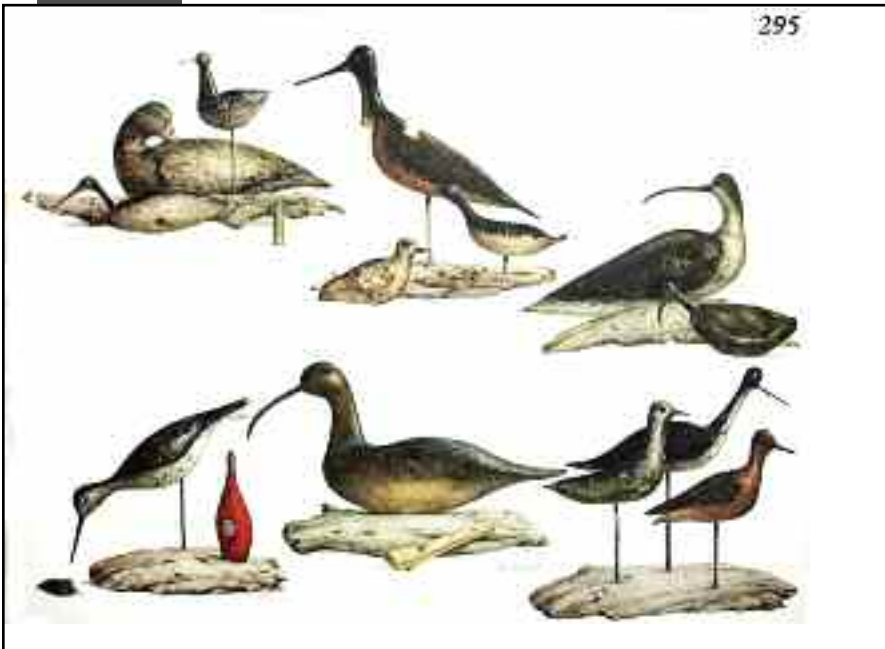


293 WATERCOLOR by Gerard Rutgers Hardenbergh, Bay Head, NJ, depicting four petrels, possibly in Barnegat Bay. Signed LL and dated 1893. Some overall foxing and water staining in bottom area. Some staining from frame in upper section. Image size approximately 10 1/2" x 18 3/4". Framed and glazed. 1200-1500



294 ORIGINAL HAND-COLORED LITHOGRAPH by Alexander Pope, Jr., depicting a pair of buffleheads in a marsh background. Very bright and strong image, circa 1882. Image size approximately 14" x 20". Museum mounting with fine matting and maple frame. An exceptional early work by this artist. 500-700



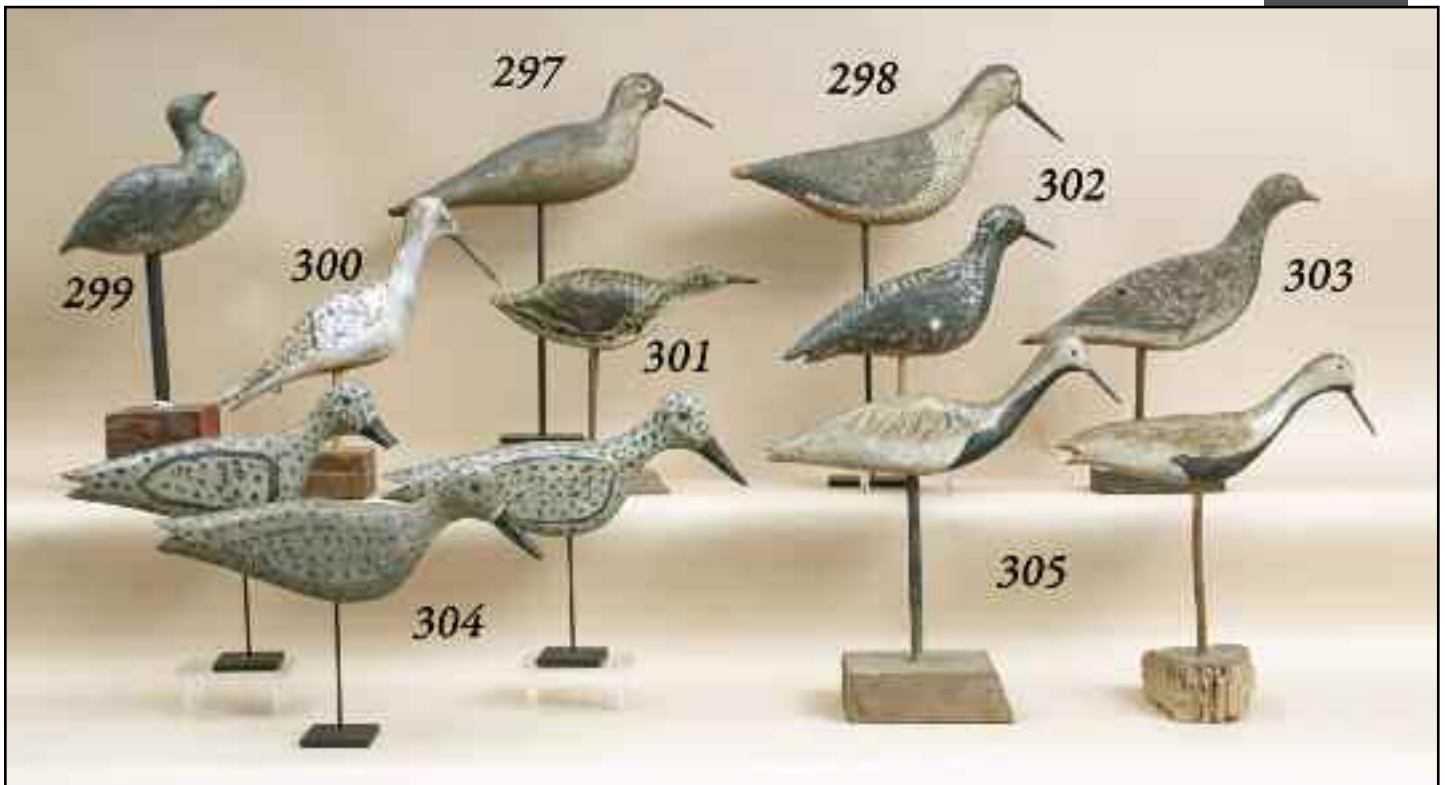


295 ARTIST'S PRESS PROOF/WINCHESTER PRESS from the folio *Classic Shorebirds* by Milt Weiler, depicting various shorebirds illustrated in the folio. The proof is in excellent original condition and is one of only four hand-signed by the artist, lower right. The sheet size is 23" x 30". 200-300



296 FULL-SIZE CARVED TURKEY HEN DECOY by G.K. Bradchage. Excellent original paint and structurally sound condition. Very full-bodied, carved in a feeding position. Finely blended painted feather work. Removable inlet legs. Mounted on a custom wood base. Overall length from beak to tail tip is approximately 32". Very rare decoy, signed by artist, with notation #0674. Purchased at Crossroads of Sports, New York, NY, circa 1975. 800-1200





297 YELLOWLEG/WILLET by the Mason Decoy Company, Detroit, MI. Very dry original paint. Original tack eyes in place. Original nail bill. Some in-use wear. 300-500

298 RARE EARLY YELLOWLEG by Thomas Gelston (1851-1924), Oyster Bay, NY. Very good original paint with some crazing. Very good structural condition with small loss to underside of tail. Cork construction. Appears to retain original bill. Fine and rare Long Island shorebird. 400-600

299 VERY PLUMP LESSER YELLOWLEG OR SNIPE, probably Virginia, in what appears to be very old working paint, with some possibly the original. Inlet bill. Very early shorebird. 100-200

300 YELLOWLEG SHOREBIRD in weathered original paint and sound condition. Antiqued paint. 50-75

301 VERY EARLY AND UNUSUAL RUNNING SNIPE, possibly Virginia. Appears to be original paint. Very good structural condition. 100-200

302 FINE EARLY BLACK BREAST PLOVER, possibly New England, in very good original paint and excellent condition. Some staining to bottom. Retains bead eyes. Bill appears to be original. Carved with a split tail. 300-400

303 VERY EARLY YELLOWLEG FLATTY in very good original paint and structurally fair condition. Chips from tail tip. Part of bill missing. Fine feather work overall. Great folk art! 100-200

304 THREE EARLY SHOREBIRD FLATTIES, probably plovers, in good original paint and structurally good condition. Half of one's bill missing. All with carved split tails. One with repair to bill. Possibly New Jersey. 200-300

305 TWO EARLY PLOVERS in excellent original paint and condition. Both with cut iron nail bills. Both with split tails. Both with bead eyes. Two nice early shorebirds. 100-200

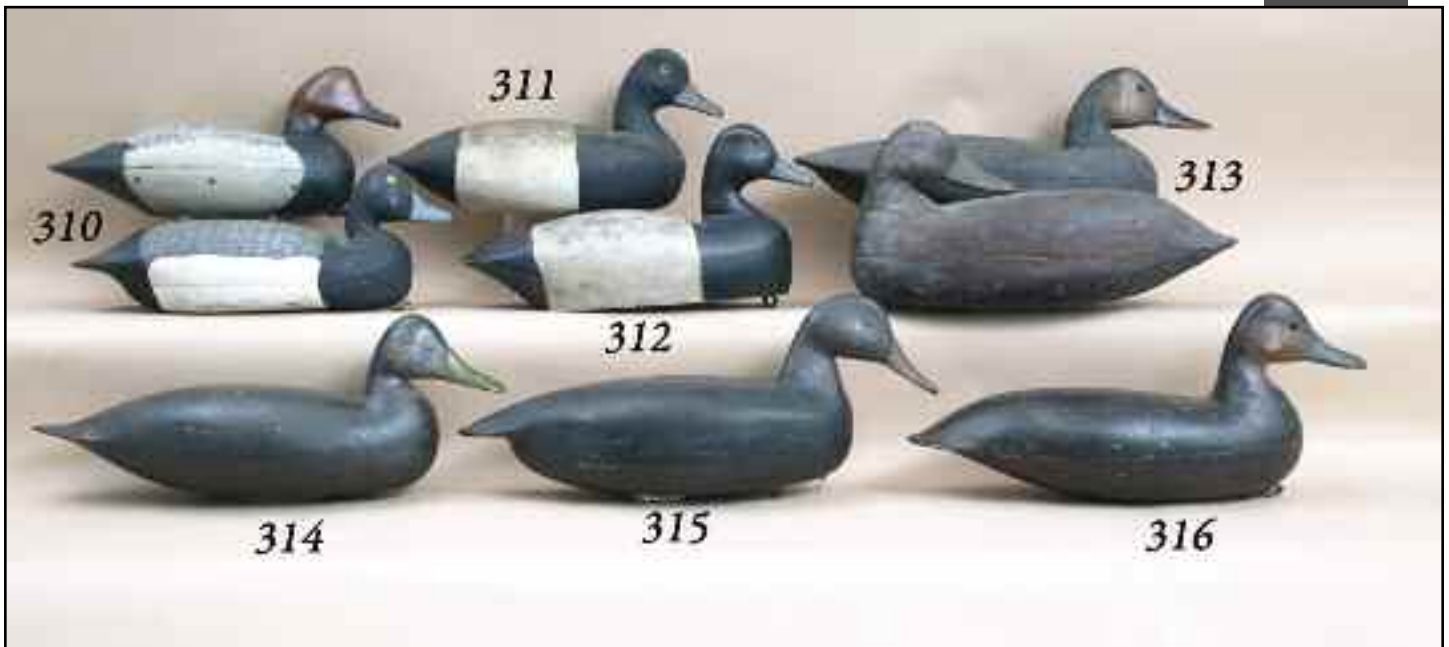


306 FINE EARLY BRANT by Nathan Rowley Horner, West Creek, NJ, circa 1920-1930. Very old working paint, possibly by Horner. Structurally excellent. Hollow carved. Retains bottom pad weight and rigging. For a similar example, see *New Jersey Decoys* by H. Fleckenstein, Jr., page 95. 1200-1800

307 RARE AND FINE RED-BREAST PLOVER by H.V. Shourds, Tuckerton, NJ, circa 1880. Good original paint and structurally good condition. Some minor in-use wear. Retains original bill. Very good feather painting on back. Small areas of roughness on breast. Classic New Jersey shorebird. 4000-5000

308 VERY FINE BRANT by H.V. Shourds, Tuckerton, NJ, circa 1890-1900, in excellent original paint with some minor gunning wear. Structurally very good condition with a hairline crack in bill and neck. Retains bottom inlet weight and rigging leather. Hollow carved. Represents H.V. Shourds at the peak of his carving career. An almost identical example can be seen in *New Jersey Decoys* by H. Fleckenstein, Jr., page 99. This decoy is one of the classic New Jersey decoys. 4000-6000

309 FINE EARLY CANADA GOOSE by Lloyd Parker, Parkertown, NJ, circa 1900. Excellent original paint and structurally sound condition. Extremely rare to find a goose by this carver without a mid-neck crack. Hollow carved with deep ice groove behind neck. Retains inlet bottom weight and leather rigging. Seven inch loss of bark to lower right side. Initials JJ stamped on body four times. A fine New Jersey decoy. See *New Jersey Decoys* by H. Fleckenstein. 3500-5500



310 BLUEBILL DRAKE attributed to Lloyd Parker, Parkertown, NJ. Hollow carved in old working paint. Unweighted. Together with a RED HEAD DRAKE, New Jersey, in old working paint. Hollow carved. Ex-Noyes collection. Weight removed. 75-125

311 BROADBILL DRAKE by Eugene "Dipper" Ortle, Pt. Pleasant, NJ. Excellent original paint and unused condition. Hollow carved. Retains John Hillman sales tag. 100-200

312 BLUEBILL DRAKE, Parkertown, NJ. Excellent original paint and unused condition. Structurally good with a repaired crack at mid-neck. Hollow carved. Bottom pad weight and rigging intact. 75-125

313 PREENING BLACK DUCK, New Jersey, in very weathered working paint. Hollow carved with applied pad weight and leather rigging. Together with a BLACK DUCK, New Jersey, in very old working paint. Hollow carved with inlet bill and ice groove. Both eyes missing. Inlet bottom weight. Both ex-Noyes collection. 100-200

314 CLASSIC NEW JERSEY BLACK DUCK by Nathan Rowley Horner, West Creek, NJ. Very early example in very old working paint and excellent structural condition. Some minor shot scarring. Speculums visible on back. Fine bill carving with chamfered undersides. Retains bottom pad weight. Hollow. 900-1200

315 EARLY BLACK DUCK, probably Tuckerton or Barnegat Bay. Very old working paint and structurally very good with old repair to check in neck. Hollow carved. Retains bottom pad weight stamped CAL. Also stamped CAL on underside. Formerly in the John Hillman collection. Retains his hand-written tag and copper staple. 100-200

316 BLACK DUCK by H.V. Shourds, Tuckerton, NJ. Very old working paint and structurally very good condition. Hollow carved with inlet bottom weight. Branded ELV under tail and WG TUTTLE behind weight and H.S. FURMAN alongside the weight. 300-400



317 BLACK DUCK, possibly by Taylor Johnson, Bay Head, NJ. Very old working paint and good structural condition. Hollow carved. Ex-Noyes collection. Together with a **BLACK DUCK**, New Jersey, in very old working paint and good structural condition. Hollow carved. Ex-Noyes collection. 100-200

318 BRANT by Eugene "Dipper" Ortley, Bay Head, NJ. Excellent original paint and unused condition. Hollow carved. Retains bottom pad weight, rigging ring and staple. 100-200

319 TWO NEW JERSEY BLACK DUCKS from the Fred Noyes Collection. The first is in old working flocked paint, fair condition with neck checks and separation at seam. Hollow carved. Inlet weight. Stamped FWN , #529 and G. The second is in old working paint and good structural condition. Applied weight. 75-125

320 TWO TINNY SHOREBIRDS possibly Strater and Sohler. Both in good original paint and structurally very good condition. One is a black breast plover, the other is a willet. 100-150

321 TWO VERY EARLY PLOVER TINNIES in excellent original paint and condition with very minor rusting. Both with unusual split tails. 75-125

322 TWO BRANT by Pete Wilber, Island Heights, NJ. The first is in excellent original paint and unused condition. Branded CW. The second is in original paint showing in-use wear. Hollow carved in a swimming position. Branded ADT and CW. 100-200

323 TWO BLACK DUCKS by Lester Van Brunt, Barnegat City, NJ. One in original paint, one in old working paint. Both structurally sound. 100-200

324 EARLY CROW by Harry V. Shourds, Seaville, NJ. Antiqued original paint and structurally sound condition. Branded *HV SHOURDS* on bottom. A fine example of the maker's work. 100-150

325 PINTAIL DRAKE by B. Rutter, Sr. Excellent original paint and structurally sound condition. Hollow carved with elongated sprig tail. Branded *RUTTER SR.* on bottom. Repair at base of tail. 100-150

326 BLUE BILL DRAKE by John Inman, Manahawkin, NJ. Possibly original paint with some touch up. Structurally sound. Branded *DW SEXTON* and *RSV* on bottom. 300-400

327 MALLARD DRAKE attributed to Ellis Parker, Beach Haven, NJ. Old working paint. Structurally very good. Retains bottom pad weight. *PW* stamped in weight. 100-150

328 TWO NEW JERSEY BRANT. The first, by John Hamilton, Cedar Run, NJ, is in original paint and unused condition. Some scuffs to paint. The second, by an unknown carver, is in old working paint. Retains weight and rigging. 100-200

329 BLUE BILL DRAKE attributed to Bob Jones, Wading River, NJ. Weathered original paint. Structurally very good. Hollow carved. Retains bottom weight and copper gunning tag of Al Linkchorst. 100-150

330 BRANT, possibly Long Island, NY. Old working restoration. Together with a *STICK-UP BRANT* by Bill Doggart, Brick, NJ. Excellent original paint and condition. Hollow carved. Branded *WWD*. 100-200 *One Shown*

331 TWO NEW JERSEY BRANT attributed to Jay Parker. Both in old working paint. Structurally good condition. Both hollow carved. One with full keel. 75-125 *One Shown*





332 PAIR OF CINNAMON TEAL by J. May, Ocean City, NJ. Very good original paint and structurally sound condition. Keels removed. Signed by carver. 75-125

333 BRANT, possibly New England, in original paint with in-use wear. Structurally good condition. Check running the length of bottom. Together with an **OVERSIZED BRANT** by Decoys Unlimited, Erie, PA. Original paint showing in-use wear. Keel removed. Stencil on bottom. 100-200

334 PAIR OF RACEY AMERICAN MERGANSERS by "Coot" Garten, VA. Very good original antiqued paint. Both structurally sound with inlet weights. Both branded COOT GARTEN on bottom. 200-300

335 HOODED MERGANSER by Oliver King, Port Severin, Ont. Very good original paint and unused condition. Together with a **NATURAL FINISH DECOY** by Jerry Orluck. 100-200

336 GRAY-BACK GULL by John Hamilton, Cedar Run, NJ. Very good original paint with minor scuffs. Hollow carved with carved wing tips. Inlet weight and pad weight. *JH* carved in bottom. 100-200

337 EARLY OLD SQUAW DRAKE, probably Maine. Very old working paint and structurally fair condition with checks to neck and back. Bill repaired. Together with a **PREENING BLACK DUCK** by J.W. Whitney, Maine. Possibly original paint with minor in-use wear. 200-400

338 RARE FULL-BODY BLACK DUCK STICK-UP by noted carver Lloyd Johnson, Bay Head, NJ. Excellent original paint and structurally fine condition. Stick-up gunning stool carved with the head facing down and to the right. Retains original glass eyes. An exceptionally fine gunning decoy by this maker. 2500-3000

339 RARE CARVED GREEN HERON by Thomas W. Carlock, Fair Haven, NJ. Very detailed carving in near-mint original paint and condition. Fine detailed feather work overall. Relief-carved wings with drop tail. Atop life-like feet mounted on custom base. Signed on bottom and dated 1972. 600-800



340 FINE PAIR OF ONE-THIRD SIZE RED HEADS by William Cranmer, Beach Haven, NJ. Near-mint original paint and condition. Both heads slightly turned. Both signed and dated 1973 on bottoms. 200-400

341 CANVASBACK DRAKE by George Murray, Beverly, NJ. Competition gunning model in excellent original paint and structurally sound condition with minor repair to bill tip. Excellent original paint with detailed paint feather work. Hollow carved. Carved primary and secondary wing feathers and carved fluted tail. Signed and dated 1976. Keel removed. 200-300



342 FEEDING SHOREBIRD WITH MINNOW IN THROAT by Delbert "Cigar" Daisey, Chincoteague, VA. Near-mint original paint and structurally fine condition. Deep relief-carved wings with split carved wing tips. This rare shorebird is branded CIGAR and signed by the maker. 300-500

343 OUTSTANDING BLACK-BREAST PLOVER by Delbert "CIGAR" Daisey, Chincoteague, Va. Near-mint original paint and structurally excellent condition. Bold relief-carved wings and raised, carved wing tips. Mounted on a clam shell base. The decoy is signed by the maker and branded CIGAR. The shell base is signed by the maker. 300-500

344 OUTSTANDING BLACK-BREAST PLOVER by Delbert "Cigar" Daisey, Chincoteague, VA. Near-mint original paint and structurally excellent condition. Relief-carved wings and split wing tips. Very plump carving. Branded CIGAR on bottom. 300-500

345 FINE YELLOWLEG by Delbert "Cigar" Daisey, Chincoteague, VA. Near-mint original paint and structurally fine condition. Deep relief-carved wings and elongated split wing tips. Mounted on a custom shell base. Signed by maker on shell with paper label attached. Decoy signed and branded CIGAR. 300-500

346 ROBIN SNIPE by Delbert "Cigar" Daisey, Chincoteague, VA. Near-mint original paint and excellent structural condition. Deep relief-carved wings and elongated carved wing tips. Carved in a feeding position. Mounted on a shell base that retains the maker's paper label. The decoy is branded CIGAR and signed by maker. 300-500

347 PAIR OF MALLARD SHOOTING DECOYS by Delbert "Cigar" Daisey, Chincoteague, Va. Near-mint original paint and structurally sound condition. Hen with fine painted feather detail. Both with cork bodies. Wood heads and full gunning keels. Both branded CIGAR on keels. Both signed with notation: *Cork Hunting Decoy Female Mallard and Drake Mallard*. 300-500

348 RUDDY DUCK HEN GUNNING DECOY by Delbert "Cigar" Daisey, Chincoteague, VA. Near-mint original paint and structurally fine condition. Carved wing feather and broad fluted tail. Branded with large CIGAR brand. Signed with notation: *Female Ruddy Hunting Decoy*. 200-300



349 RARE AND EXCEPTIONAL SLEEPING CANADA GOOSE MINATURE by Joseph W. Lincoln, Accord, MA. Mint original paint and condition. Very fine detailed painted feather work and painted crossed wing tips. The maker's ink stamp on bottom. For additional information on this carver see *Joseph W. Lincoln: Accord, Massachusetts* by Cap Vinal. 3000-4000

350 EARLY CURLEW, probably Cape Cod, MA. Excellent original paint preserved by a coat of shellac. Retains original inlet bill. Fine original shoe-button eyes. An outstanding example of a New England shorebird. 800-1200

351 SNAKEY-HEAD GOOSE MINIATURE by Joseph W. Lincoln, Accord, MA. Mint original paint and condition. Very fine detailed feather painting and painted crossed wing tips. Head, with tiny painted eyes, is facing slightly upward. Bears the maker's ink stamp on bottom. Outstanding in all respects! For additional information on this carver see *Joseph W. Lincoln: Accord, Massachusetts* by Cap Vinal. 3000-4000

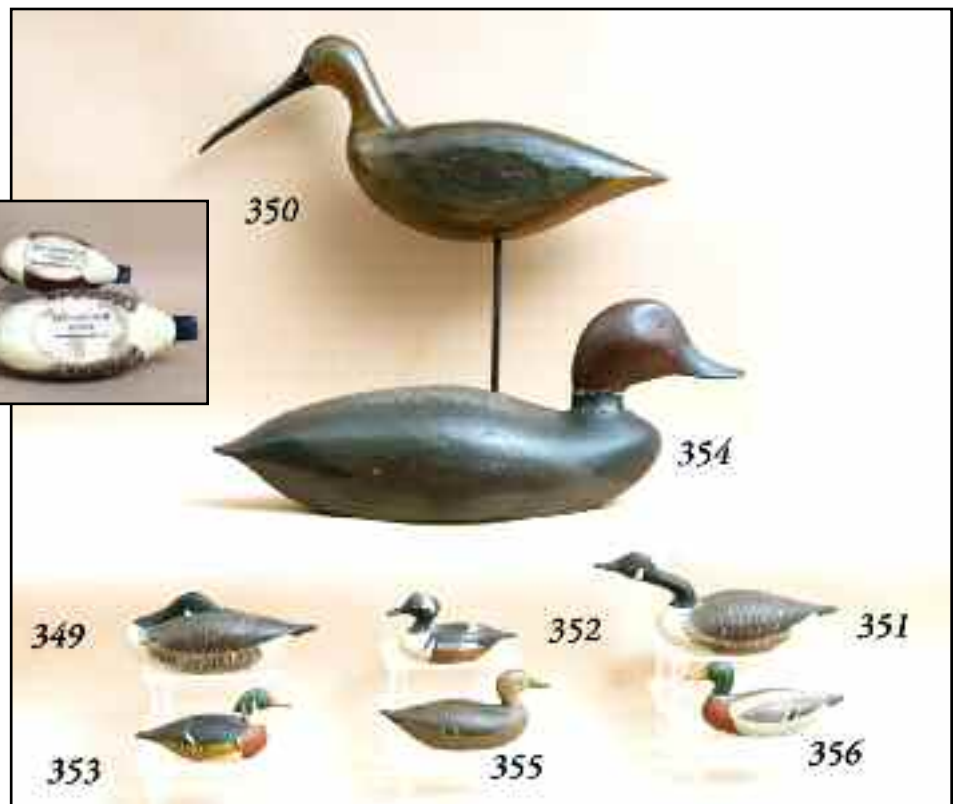
352 RARE AND FINE HOODED MERGANSER DRAKE MINIATURE by Joseph W. Lincoln, Accord, MA. Excellent original paint with very minor flaking to top of crest. Finely detailed painted feather work and structurally excellent condition. Very dainty and classic Lincoln miniature. Retains maker's ink stamp on bottom. 3000-4000

353 EXTREMELY RARE AND FINE WOOD DUCK DRAKE MINIATURE by Joseph W. Lincoln, Accord, MA. Fine miniature rendition of the classic Lincoln wood duck drake. Mint original paint and condition. Very fine painted feather work and crossed painted wing tips. Bears the maker's ink stamp on bottom. 3000-4000

354 EXTREMELY RARE RED HEAD DRAKE by Frank Adams, West Tisbury, MA, circa 1908. Excellent original paint and structurally very good condition. Typical neck separation at mid-neck. Some filler loss. Extremely rare decoy by this maker. See *Martha's Vineyard Decoys* by Stanley Murphy. Signed and dated 1908 on bottom. Small chip on left side of tail. Retains rigging ring and staple. 2500-3500

355 EXTREMELY RARE PINTAIL HEN MINIATURE by Joseph W. Lincoln, Accord, MA. Mint original paint and condition. Very fine detailed painted feather work on back and painted crossed wing tips. An exceptionally fine and rare Lincoln miniature. Retains the maker's ink stamp on bottom. 3000-4000

356 RARE MALLARD DRAKE MINIATURE by Joseph W. Lincoln, Accord, MA. Near-mint original paint and condition. Detailed painted feathers and crossed painted wing tips. Retains the maker's ink stamp on bottom. Mallard drake miniatures are very rare Lincoln carvings and exceptionally rare in this fine condition. 3000-4000





356A CLASSIC PAIR OF EIDERS by World Championship carver Keith Mueller, South Windsor, CT. Excellent original paint and structurally superb condition. The hen with detailed paint feather work and fine bill carving. The drake with fine paint shading. Carved open bill grasping a carved mussel. Both hollow carved with ice grooves. Both with heads slightly turned. Both branded MUELLER with signature and hand-written notation: *First Stratford Eider*. Both dated 7/9/85. Classic Keith Mueller carvings. 2500-3500

356B RARE FIRST EDITION OF WORKING DECOYS OF THE JERSEY COAST AND DELAWARE VALLEY by Kenneth L. Gosner. Only printing of this rare book chronicling New Jersey waterfowling. Mr. Gosner was formerly the curator of Zoology at the Newark Museum, Newark, NJ. Very good condition with two small tears to the dust cover. 200-300

356C TWO OLD AMMUNITION BOXES consisting of a Remington Shur Shot, 12 ga. container. Together with a Peters 12 ga. target loaded shell box. Both with shellac finish. Good condition 50-75

356D VERY FINE CANADA GOOSE by Sean Sutton, Paulsboro, NJ. Excellent original near-mint paint and structurally fine unused condition. Hollow carved with relief-raised wing detail, raised crossed wing feathers. Broad fluted tail. Retains bottom pad weight and rigging. Signed by maker. 600-800

356E FINE BLACK DUCK by Bill Joeckel, Long Island, NY. Exceptionally well carved with near-mint original paint. Raised relief-carved primary and secondary wing feathers. Broad carved fluted tail. Head turned boldly left. Mandible detail. Hollow construction. Signed and branded by maker. 1200-1500

356F COLLECTION OF DECOY MAGAZINE ISSUES encompassing the years 2000-2009. Includes 60 issues, all in good condition. 100-200

356G COLLECTION OF DECOY MAGAZINE ISSUES including 1986-1987 and 1992-1999. Includes 54 issues. All in good condition. Incomplete series. 100-200

356H COLLECTION OF DECOY MAGAZINE SPECIAL EDITIONS, YEAR IN REVIEW, 1991 -1998. The group consists of 18 issues. All in very good condition. 100-200

356I GROUP OF SIX BOOKS consisting of *New England Decoys* by S. and J. Delph, *American Bird Decoys* by W. Mackey, *Decoys of Maritime Canada* by D. and G. Guyette, *Factory Decoys* by S. and J. Delph. All with dust covers. Together with *The Art of the Decoy* by A. Earnest and *Collecting Antiques* by C. Luckey. Both soft cover. All in good condition. 100-150

356J GROUP OF BOOKS 16 BOOKS consisting of *Shorebird Decoys* by H. Fleckensten, *Decoys of the the Mississippi Flyway* by A. Haid, *Factory Decoys* by J. Delph, *The Art of the Decoy* by A. Earnest, *American Bird Decoys* by W. Mackey, *Mason Decoys* by Goldberger and Haid, *Wildfowl Decoys* by J. Engers, *American Wildfowl Decoys* by J. Waingrow. All hard cover in very good condition with dust jackets. Also, six decoy collecting books, soft cover, good condition, and *America's One Hundred Greatest* by L. Harrell and R. Madison Mitchell by C. Robins. 200-300

357 GOLDENEYE HEN attributed to Frank Dugan, Martha's Vineyard, MA. Very old working paint, some possibly original. Structurally good with check the length of bottom. Some shot scarring on rear top and side. Branded JGM on bottom and back. 100-200

358 OLDER BLUE WING TEAL FLATTY STICK-UP in excellent original paint and good structural condition. Repair to bill at base. Relief-carved wings. An unusual decoy. 100-200

359 BLACK DUCK by A.E. Crowell, East Harwich, MA. Very old working paint. Head possibly Crowell's paint. Solid carved with carved fluted tail. Shrinkage checks overall. Early pre-brand model. Weights removed. 100-200

360 VERY EARLY HOODED MERGANSER probably Quebec, in weathered original paint with unusual chipped carving. Head turned slightly left. Inlet bottom weights. Possibly in unused condition. 100-200

361 OVERSIZED BRANT carved in the manner of Joe Lincoln. Made as a self-bailing decoy, in excellent original paint and unused condition. Hollow from rear. Together with TWO TINNY SHOREBIRDS, one in rusted original paint. One in fair condition, one in poor condition. 100-200

362 TWO EARLY EIDERS, probably Maine or Canada. Both in old working paint. Both structurally good. 100-200

363 FINE EARLY CANADA GOOSE, Quebec, Canada. Weathered paint that appears to be original. Deep relief-carved wings and carved feathers on the back wings and tail. High head pose with large cheeks. Retains original glass eyes. Possibly used as an ice goose. KM 77 carved in bottom. 1200-1500

363A GOLDENEYE DRAKE, probably Martha's Vineyard, MA. Very old working paint and structurally good condition. Bottom weight removed. 100-200

364 THREE DECOYS, Canada, possibly Quebec. A goldeneye drake with bulbous head, and two goldeneye drakes with deep relief-carved wings. 100-200 *One Shown*





365 VERY EARLY BLACK DUCK, possibly St. Claire Flats, possibly original paint. Bill has been shortened. Branded GRS and M under tail and under bill. 200-300

366 BRANT from the Maritime Provinces. Retains weathered paint, some of which appears to be original. Structurally very good with left lower piece of bill missing. Open check on lower right side. Made as a stick-up. 400-600

367 GOLDENEYE DRAKE, New York, similar to the Stevens Factory decoys. Appears to be original paint and unused condition. Hollow carved. Together with a BLUEBILL HEN, New York, in old working paint with original comb painting to back. 100-200

368 VERY EARLY RED HEAD HEN by Ken Harris, Woodville, NY. Retains weathered original paint. Structurally fine condition. Early maker's stamp on bottom. 100-200

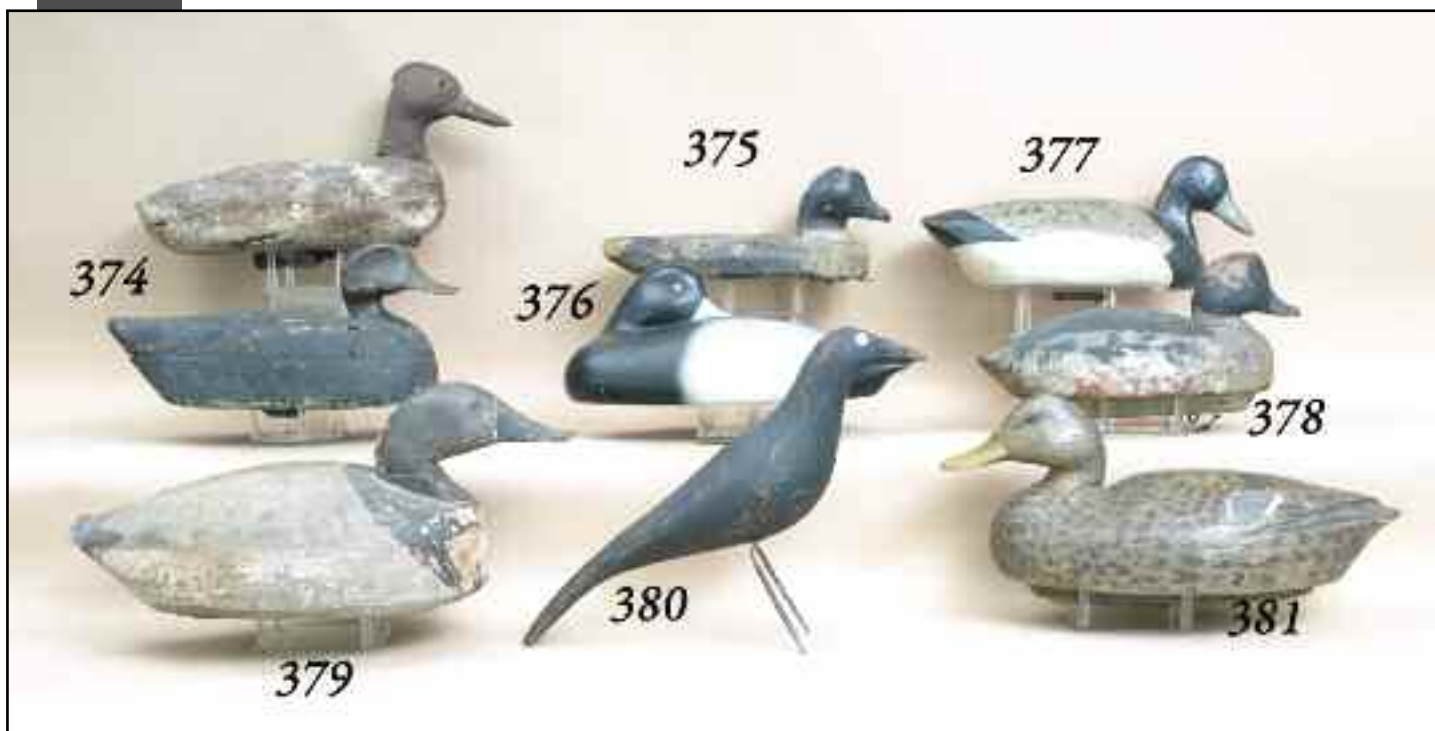
369 EARLY OVERSIZED BLUE BILL HEN by Ken Harris, Woodville, NY. Very good original paint showing mild wear to head crest, and bill and tail edge. Several shot scars. Retains large keel. Maker's stamp on bottom. 100-200

370 EARLY BLUEBILL DRAKE probably New York, showing original paint with touch up to black areas. Structurally good with some minor shot scarring. Bottom weight removed. Together with a Bluebill hen, New York, in old working paint. Diminutive size. Bottom weight removed. Branded on back. 75-125 *One Shown*

371 BLUEBILL DRAKE by Frank Combs, Alexandria Bay, NY. Appears to be in good original paint and structurally fine condition. Some shot scarring to body and bill. Retains full bottom weight and keel. Stamped WAW on weight. 200-300

372 GROUP OF THREE DECOYS consisting of a bluebill hen, New York, a redhead drake, New York, and a decoy in natural wood by Frank Lewis, New York. 75-125 *Two Shown*

373 BLUEBILL HEN by Jim Stanley, Cape Vincent, NY. Weathered paint, possibly the original. Bottom weight removed. Structurally very good. 100-200



374 VERY EARLY BLACK DUCK, Verity family, Long Island, NY. Cork construction with stylized wood head with touch up. Possibly original paint with touch up. Together with a very early Merganser Hen, pegged cork construction, in very old working paint. One eye missing. Retains old cast weights and lead strips. 300-400

375 VERY EARLY WING DUCK, possibly Verity family, Long Island, NY. Early cork construction. Remnants of paint, some of which may be original. Structurally good with some shrinkage to cork. Wood head intact. 100-200

376 BLUEBILL DRAKE SLEEPER by Al McCormick, Babylon, NY. Excellent original paint and structurally very good condition. Fine hairline check on right side near head. Unrigged condition. Signed by maker on bottom. 100-200

377 BROADBILL DRAKE by Earnest Steck, Quogue, NY, circa 1924. Good original paint and structurally good condition. Signed by the maker on bottom. 50-75

378 BUFFLEHEAD DRAKE, possibly Cape Cod, MA, area. Weathered working paint. Retains full keel. Together with a bufflehead drake in good original paint and condition. Retains full keel. Branded HALL on bottom. 100-200 *One Shown*

379 OVERSIZED CANVASBACK HEN from the Columbia, PA, area. Weathered original paint and structurally good condition. Hairline check in left side of head extending to bill. Retains original glass eyes. Bears bottom keel weight. Copper id tag reads G.H. Wilson, W.Ville, PA. 100-200

380 EARLY CROW DECOY, probably Illinois River. Weathered original paint worn to wood in areas. Structurally fair with separation in inlet bill on top side. Check on underside of breast. Two rusted applied feet stamped with R.B.D. 100-200

381 MALLARD HEN in very old working paint attributed to Frank Schmidt, Detroit, MI. Structurally very good condition. Retains bottom keel and weight. 100-200



382 PINTAIL DRAKE carved in the manner of Charles Perdue in original antiqued paint and good structural condition. Together with a factory MALLARD DRAKE in very good original paint and condition. Unweighted. 75-125

383 EARLY CANVASBACK DRAKE HIGH HEAD, probably Wisconsin, in weathered paint, possibly the original. Structurally fair with check in the lower neck and stress cracks to back. Retains glass eyes. Together with an early COOT, oversized, in old working paint. Solid construction. Retains bottom weight. 100-200

384 VERY EARLY CANVASBACK DRAKE attributed to Clifford Moody Lind, Fremont, WI. Very good original paint with some areas of in-use wear. Possible touch-up to black area of tail. Hollow carved with bottom board. See *Decoy Collector's Guide*, October/December, 1964, page 13. Some small chips to tail. Check to head. 200-300

385 MALLARD DRAKE by Heck Whittington, Olgesby, IL. Very old working paint. Hollow carved. Structurally good condition. 75-125

386 STICK-UP BRANT from the Maritime Provinces. Weathered working paint and structurally good condition. Knot on mid-left side and several checks on underside. Retains placement rod. 300-400



387 ONE-QUARTER SIZE HERON by Maryland carver Eddie Wozney. Excellent original paint and structurally good condition. Repaired crack in lower neck. Mounted on a driftwood base. Signed and dated 1992 on bottom of carving. 200-300

388 SNOWY EGRET by Maryland carver Eddie Wozney. Excellent original paint and structural condition. S-carved neck. Signed and dated 1990. Carved W on bottom. Mounted on a custom driftwood base. 400-600



389 VERY FINE FULL-SIZE BLUE HERON by Maryland carver Eddie Wozny. Excellent original paint and condition. Finely detailed flowing feather carving. Curved carved neck and elongated bill. Custom-made legs and feet mounted atop a driftwood stump. 1200-1500



390 FINE NEW JERSEY SWAN, full size, by Jamie P. Hand, Cape May Courthouse, NJ. Excellent original paint and structurally sound condition. Hollow carved with deep ice groove. Branded *JP HAND* on bottom. 300-500

391 PRIMITIVE CURLEW with traces of very weathered paint remaining. Fair condition with bill missing. Applied wings with piece of right top wing missing. 75-125

392 RINGNECK DRAKE by B. Chauvin, LaRose, LA. Very good original paint with shelf scuffs and unused condition. Split tail carving with head turned slightly right. Deep ice groove in back. 100-200

393 VERY EARLY MATCH BOX HOLDER with one-half of a carved green wing teal miniature affixed. Good structural condition with some loss of paint to head and tail of teal. 50-75

394 EARLY MALLARD DRAKE by George Soule, Freeport, ME. Excellent original paint and unused condition. Mounted on a custom lamp base. 75-100



395 THREE EARLY BAIT HOLDERS consisting of a live bait cage by EISERMANS, Trenton, OH, in good original condition with minimal wear. Together with a kidney-shaped bait belt container in good condition, and a kidney-shaped bait container stamped OLD PAL in original paint. 75-125

396 OFFICIAL BASEBALL OF THE NATIONAL LEAGUE made by the Rawlings Company, autographed by Ted Williams at a Coach's Clinic, Cherry Hill, NJ, January 22, 1983. Displayed on a wood plaque with a photo of Ted Williams with name and date plaque. A gift to the consignor from Ted Williams. 300-500

397 TWO EARLY FLY REELS, consisting of a True Temper and an early Pflueger Gem 2095. Also a Perrine three-tier fly box with assorted nymphs and streamers. 50-75

398 FOUR EARLY LURE BOXES, some with baits consisting of two flat fish, two empty Pflueger boxes a box of Snag-Proof lures containing two rubber frogs and a rubber mouse and three experimental baits by L. James Bashline, Bowmansdale, PA. All from the Bashline estate. 100-200

399 EARLY BAMBOO FLY ROD by the Hardy 's of England. PALAHONA C.C. de France model. Two-piece, with cork handle. Tip 3/4" shorter than butt. With cloth sleeve and metal case. Good condition. 75-125

400 CUSTOM SPLIT-BAMBOO JIGGING ROD by the Har-Lee "17 Fathome". Excellent original rainbow wrap. Penn Senator No. 30 reel mounted. Very good original condition. 50-75

401 EARLY CUSTOM TROLLING ROD by Sabre, California Tackle Co., Gardenia, CA. Created with Aftco gathering roller and tip. Penn No. 349 trolling reel mounted. Excellent condition. 50-75

402 GROUP OF 31 BAITS AND SPINNERS including hula poppers, jitterbugs, and others. All in used, good condition. 75-125

403 GROUP OF NINE FLAT FISH BAITS, all in generally good condition. Together with two dobbers in original paint and condition. 50-75

404 GROUP OF NINE JOINTED FRESH WATER BAITS consisting of a Heddon Joint Vamp, a Pflueger Palomine and seven additional jointed baits in overall good condition. 50-100

405 GROUP OF TWELVE LARGE LURES, including popper and jointed lures. All in original paint and condition. Salt water and muskie lures. 100-200

406 GROUP OF TWELVE BAITS in varying condition. 50-75

407 SIX UNUSUAL LARGE BAITS by Globe and Globe-style. The largest is 6 1/2", the smallest is 3". All in fair condition. All painted yellow. 50-75

408 GROUP OF FOUR UNUSUAL LARGE BAITS in original paint. All wood construction. The largest is a four-piece jointed bait, measuring 12 1/4". 30-50

409 VERY EARLY DIMINUTIVE FISHING REEL, marked *Julius Vom Hoff*. Patent date marked *Nov. 17, 85, Pat. Oct. 8, 1889*. Reel appears to be complete and is in working order. Ratchet functioning in good working order. Underside of reel seat is marked 3 1/2. 200-300





409A UNUSUAL GATHERING BASKET, woven, in generally good condition. Concave bottom. 75-125

410 LIMITED EDITION PRINT by Jack Schroeder, featuring Lem and Steve Ward with one of their pintail decoys. No. 332/480. Marked *Special Edition*. Signed by the artist in pencil, LR. Double remarque of a bufflehead, signed by Lem Ward. Also a graphite pintail remarque, LR. Also with the 1981 Maryland Migratory Waterfowl stamp, signed by the artist. 100-200

411 ORIGINAL PAINTING by Dieckhoner, depicting a lynx flushing a grouse in a snow-covered wooded setting. Acrylic on artist board. Excellent condition, with museum matting and custom frame. Image size is 9" x 17". 200-300

412 CARVED EFFIGY OF A BROWN TROUT by R. S. McKenzie. Chemby, PA. Very good original paint and condition. Three dimensional carving, approximately 19 1/2" in length. Two small areas of flaking at vent and left front eye area on back of carving. Feeding position. Signed by artist. Wall mounting attached. 200-300



Vintage Concave Bottom Basket

413 RED HEAD HEN, probably Quebec, in very good original paint and structurally sound condition. Deep ice groove, carved wing tips and fluted tail. Preserved by a coat of shellac. Together with a MALLARD DRAKE by Kelly Dodds in very good original paint and structurally sound condition. Signed on bottom. 100-200
View at on-line catalog

414 EARLY STICK-UP LOON in old weathered working paint and structurally fair condition. Checks to head and body. An unusual folk art decoy, probably Maine. Retains tack eyes and doweled legs. Old repair to underside of bill tip. 100-200 *View at on-line catalog*

415 PRIMITIVE FISH PLAQUE depicting a salmon. Folk art carving, gouge-carved painted oval plaque. Overall length 19 1/2". 50-75 *View at on-line catalog*

416 MISCELLANEOUS GROUP consisting of a carved decoy head on plaque, a limited edition print of Madison Mitchell and his decoys, signed by Mr. Mitchell and Paul Shertz, the artist, with artist proof. Dated first day of issue, 9/1/77, framed and matted. Also a 1978 Mason decoy calendar, framed, and two Barnegat Bay Decoy and Baymen's Museum advertising posters. 100-200 *View at on-line catalog*

417 GROUP OF EIGHT FLATTY GOOSE SILHOUETTES, wood construction. All in working condition. 100-200 *View at on-line catalog*

418 THREE NEW JERSEY BLACK DUCKS. The first is a hollow-carved sleeper with flocked paint and old repaint. The second is a hollow-carved black duck with inlet bottom and old working flocked paint. Noyes collection stamp on bottom. The third is an early black duck, hollow, with inlet weight. Crack and check at mid-neck. Old working paint. All ex-Noyes collection. 200-300 *View at on-line catalog*

419 VERY EARLY BLACK DUCK attributed to Sam Collins, Essex, CT. Old working paint and fair structural condition. Piece missing from neck. 100-150 *View in on-line catalog*

420 OVERSIZED FLYING GULL, probably Maine, similar to the work of Gus Wilson. Original paint and structurally fair condition. One-half of bill missing and breaks to both feet. 200-300 *View at on-line catalog*

421 BRANT carved in the manner of the North Carolina decoys. Antiqued condition. Solid carved. Retains bottom weight. 75-125 *View in on-line catalog*

422 FRAMED PHOTOGRAPH of a hunter at dusk with shotgun and duck in hand. Image size approximately 18" x 18 1/2". Together with graphite work depicting four pintails in a marsh setting by S.A. Simko. Excellent original condition. Framed, signed and dated 2-19-48. Image size approximately 20" x 16". 100-200 *View at on-line catalog*

423 TWO CANVASBACKS, a drake and a hen, from the Upper Bay. The hen in very good original paint with minor scuffs. Structurally good with bottom checks. Retains weight, ring and staple. The drake is a very early carving, in very old working paint and good structural condition. Check on back. Retains cast iron keel weight. Carved Q on bottom. 100-200 *View at on-line catalog*

NOTES



Index

A

Adams, F. 354
Allsop, C. 232
Anderson, R. 200, 207
Aarness, P. 227

B

Baker, J. 210-213
Baldwin, W. 248
Barnegat Bay Decoys 6, 17, 22, 35, 102
Barnes, S. 127
Barrow, B. 110
Bell, G. 155
Bieber, B. 95
Birch, C. 256, 259
Birch, J. 215
Birdhug Studio 237
Birdsall, C. 3, 9
Bradchage, G.K. 296
Braun, E. 149
Brown, F.C., Jr. 105-107

C

Chauvin, B. 392
Combs, F. 371
Crowell, A.E. 359
Carlock, T. 339
Clark, R. 283-285
Cobb, D. 196
Conklin, H. 157-174, 176, 179, 180
Cranmer, W. 340

D

Daisey, D. 343, 344-348
Daisey, H. 240
Dauntless Decoy Co. 71
Dobbins, F. 230
Dobrosky, P. 150
Dodge Decoy Co. 61
Down East Sportsraft 38-40
Dugan, F. 357

E

English, J. 216
Evans Decoy Co. 47, 60

F

Fennimore, C. 152
Fitzpatrick, T. 195, 198, 219, 220

G

Garten, C. 334
Gelston, T. 298
Giannetto, V. 187
Gibson, P. 115, 116, 121, 140

H

Hamilton, J. 177, 328, 336
Hammel, K. and B. 34
Hancock, M. 257, 258, 260, 268A, 271, 275

Hand, B. 112
Hand, J. 98, 111, 390
Hardenbergh, G.R. 292, 293
Harris, K. 368, 369
Herrmann, R. 251, 252
Herter's Decoy Co. 41, 43, 44, 63, 64
Hillman, J. 153
Holloway, J. 221
Horner, N.R. 306, 314
Hudson, I. 254

I

Inman, J. 326
Irwin Bros. 234

J

Jobes, H. 119
Joeckel, B. 356E
Johnson, T. 317
Joiner, C. 135
Jones, B. 329

K

King, O. 335
Kovacs, C. 222

L

LaFountain, D. 37
Li, Y. 242
Liebensperger, T. 199
Lincoln, J.W. 349-353, 355, 356
Lynch, J. 104

M

Marter, C.R. 217, 218
Mason Decoy Co. 42, 45, 46, 48-51, 53-56, 58, 297
May, J. 332
McChesney, H. 243
McCormick, A. 376
McKenzie, R.S. 412
McLaughlin, J. 208, 209
McNulty, T. 154
Mitchell, R.M. 113, 118, 120, 122, 128, 130, 133
Moody, C. 384
Moore, C. 201
Morey, St. 93, 103
Morgan, J. 214
Mueller, K. 356A
Murray, G. 341

O

Ortley, E. 311, 318

P

Parker, E. 327
Parker, J. 331
Parker, L. 309, 310
Peterson, P. 229, 233
Pope, A. 294
Potts, J. 151
Price, D. 280
Pryor, L. 131

Q

R

Rhodes, D. 97, 246, 249, 250

Roberts, J.F. 269, 272, 276, 277, 281, 282
Rutter, B. 178, 325

S

Sabatini, B. 183
Sabatini, R. 181, 182, 203-206, 270
Schill, R. 241, 244, 253
Schmidt, F. 381
Shourds, H.V. (Seaville, NJ) 73-84, 86, 87, 91, 92, 94, 95, 96, 100, 175, 245, 247, 324
Shourds, H.V. (Tuckerton, NJ) 307, 308, 316
Smoker, R.W. 145, 146
Soule, G. 394
Stafer, M. 244
Stanley, J. 373
Steck, E. 377
Sterling, L. 141
Strunk, G. 109, 156
Sutton, S. 356D

V

Valkavich, P., Sr. 108
Van Brunt, L. 323
Vom Hoff, J. 409

W

Waller, R. 238
Weiler, M. 295
White, B. 188-194
Whittington, H. 385
Wilber, P. 322
Wildfowler Decoy Company 1, 2, 4, 7, 8, 10-21, 23-27, 29, 31-33, 36, 90, 101
Williams, T. 396
Wozney, E. 387-389



Conditions of Sale

Property listed for sale in this auction will be sold in accordance with the following terms and conditions.

1. Every effort has been made by Frank & Frank Sporting Collectibles LLC to describe articles offered for sale accurately. However, all property offered is sold "as is" and it is suggested that prospective bidders inspect the property before bidding or call this office for a detailed condition report.
2. A "Buyer's Premium" in the amount of 18% (discounted to 15% for cash or check) shall be added to the successful bid price and is payable by the purchaser as part of the total purchase price.
3. We reserve the right to withdraw any property or alter any catalog description prior to the sale and shall have no liability for such action.
4. We reserve the right to reject any bid. The highest bidder acknowledged by the auctioneer will be the purchaser. Should there be a dispute between bidders, the decision of the auctioneer will be binding.
5. We offer absentee and phone bidding as a service to our clients who are not present at auction. However, we are not responsible for errors or omissions in connection with the execution of such bids.
6. The auctioneer may reject any opening bid which he deems is insufficient and withdraw the article from the sale. The auctioneer may also reject any advance which he decides is insufficient.
7. All items purchased are subject to the 7% New Jersey Sales Tax, unless the purchaser possesses a valid tax exemption number.
8. Payment is due at time of purchase. No property will be released without payment in full. Methods of payment are cash, approved check, and Visa or Master Card.
9. All shipping and insurance charges are the responsibility of the purchaser. Unless otherwise noted, decoys are not sold with stands.
10. By participating in this sale, you indicate your acceptance of the terms and conditions.
11. Any legal conflict arising from this auction will be heard and judged by the court system in the state of New Jersey. NJSA applies to the auction and participants.
12. In the event of a dispute between bidders, the auctioneer reserves the right to determine the successful bidder, or re-offer and resell the disputed item.