

DECOYS & SPORTING COLLECTIBLES

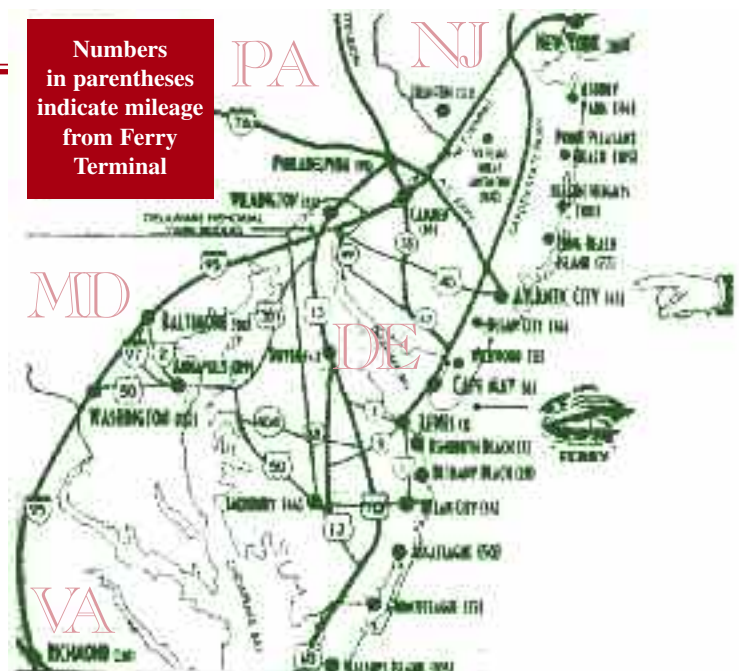
Auction March 28, 2010

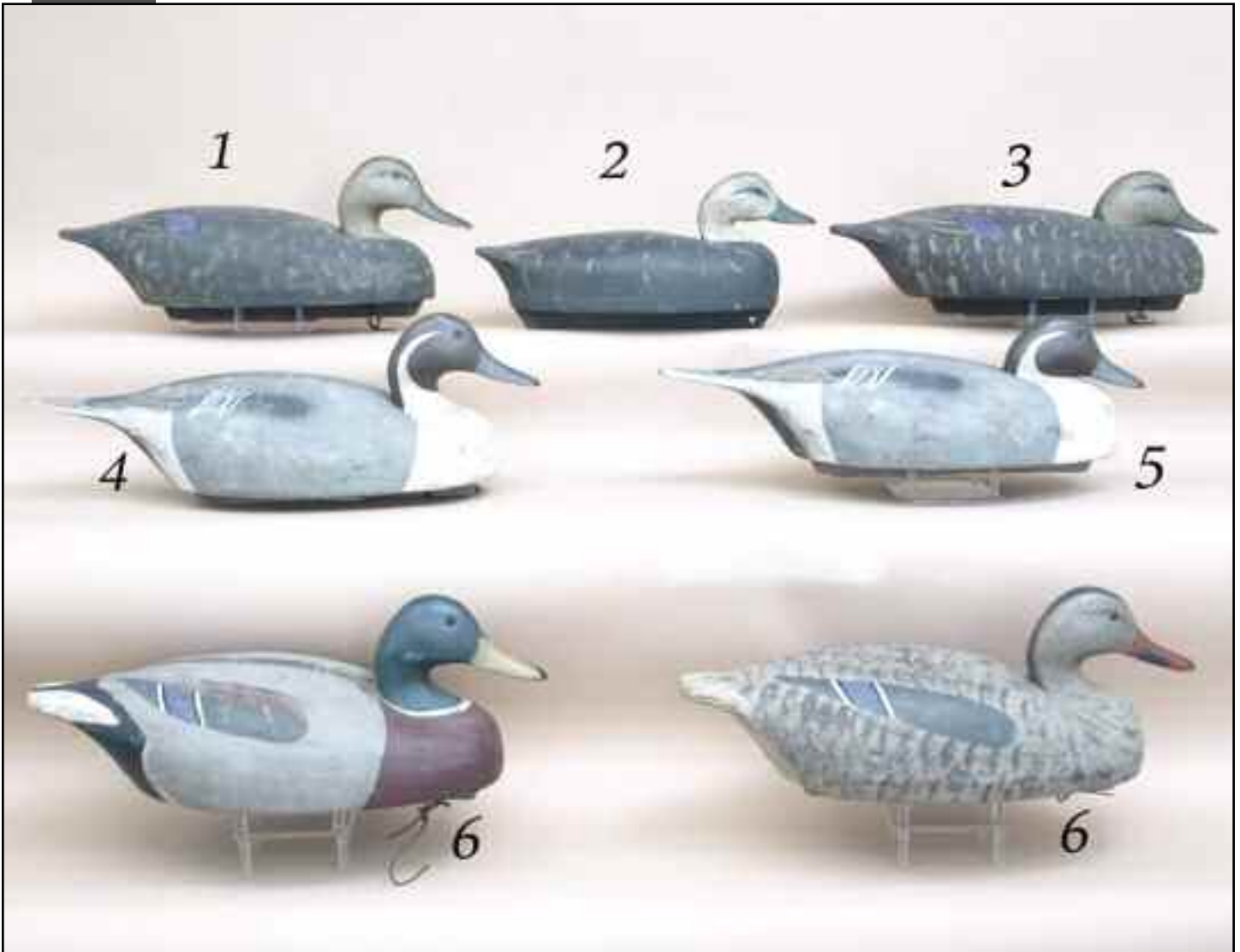
215 East Main Street • Tuckerton, NJ

- Preview:** Saturday, March 27, 11:00 a.m. to 4:00 p.m.
Sunday, March 28, 8:00 a.m. to 9:45 a.m.
- Auction:** Sunday, March 28, 10:00 a.m. Start Time
- Directions:** South or north on the Garden State Parkway to Exit 58 Tuckerton. Proceed into Tuckerton and make a left on to E. Main St. (Rt 9) to #215 E. Main Street (Large White Building) next to restaurant. Parking in the rear of facility.
- Catalog:** Fully illustrated, \$25.00 (\$34.00 Outside U.S.) -- includes post sale price key.
- Information:** For auction information and absentee/phone bidding information:
Frank & Frank Sporting Collectibles LLC
422 Lakewood-Farmingdale Road
Howell, NJ 07731
Phone/Fax: (732) 938-2988
- Visit us at: www.frankandfrankdecoys.com • Email: afrank1807rh@cs.com



will be accepting
CONSIGNMENTS
for our
**FALL 2010
AUCTION**
Call Early
to reserve space!
Limited to 400 lots.





1 TWO BLACK DUCKS by the Wildfowler Decoy Company, Pt. Pleasant, NJ. Magnum models in good original paint with some possible touch up. Good structural condition. Both with bottom keels. Both with brands. 100-200

2 THREE BLACK DUCKS by the Wildfowler Decoy Company, Old Saybrook, CT. Very old working paint, possibly by Jess Heisler. All hollow carved with bottom boards. All with inlet heads and full keels. All with brands. 75-125

3 TWO BLACK DUCKS by the Wildfowler Decoy Company, Pt. Pleasant, NJ. Magnum models in original paint with some possible touch up. Structurally good condition. Both with bottom keels. Both with brands. 100-200

4 PINTAIL DRAKE by the Wildfowler Decoy Company, Pt. Pleasant, NJ. Magnum model in very good original paint showing some in-use wear. Balsa construction with full bottom keel and crisp brand. 75-125

5 PINTAIL DRAKE by the Wildfowler Decoy Company, Pt. Pleasant, NJ. Magnum model in very good original paint showing some in-use wear. Balsa construction with full bottom keel and crisp brand. 75-125

6 PAIR OF MALLARDS by the Wildfowler Decoy Company, Pt. Pleasant, NJ. Magnum models in original factory paint with some possible touch up. Both retain full bottom keels and brands. 100-200



7 RUNNING GREATER YELLOWLEG by the Wildfowler Decoy Company, Pt. Pleasant, NJ. Excellent original paint by Dottie Clayton. Structurally fine with relief-carved wings. Mounted on a custom base. Signed DC on decoy with early ink stamp on base. 300-400

8 PAIR OF BUFFLEHEADS by the Wildfowler Decoy Company, Pt. Pleasant, NJ. Very good original paint and unused condition. Some minor flaking to hen's left back. Both with early Wildfowler ink stamp. 200-300

9 CANADA GOOSE by Charles R. Birdsall, Pt. Pleasant, NJ. Hand carved, snakey-head model in excellent original paint and unused condition. Hollow construction. Signed on bottom and branded CRB. See *Wildfowler Decoys* by Cowan and LaFountain, pg. 93. 1500-1800

10 ONE-THIRD SIZE PINTAL DRAKE by the Wildfowler Decoy Company, Pt. Pleasant, NJ. Excellent original paint and condition. Retains early ink stamp. Initialed DC (Dottie Clayton). 200-300

11 ONE-THIRD SIZE BUFFLEHEAD HEN by Charles R. Birdsall, Pt. Pleasant, NJ. Mint original paint and condition. Hand-carved model signed and branded CRB on bottom. 75-125

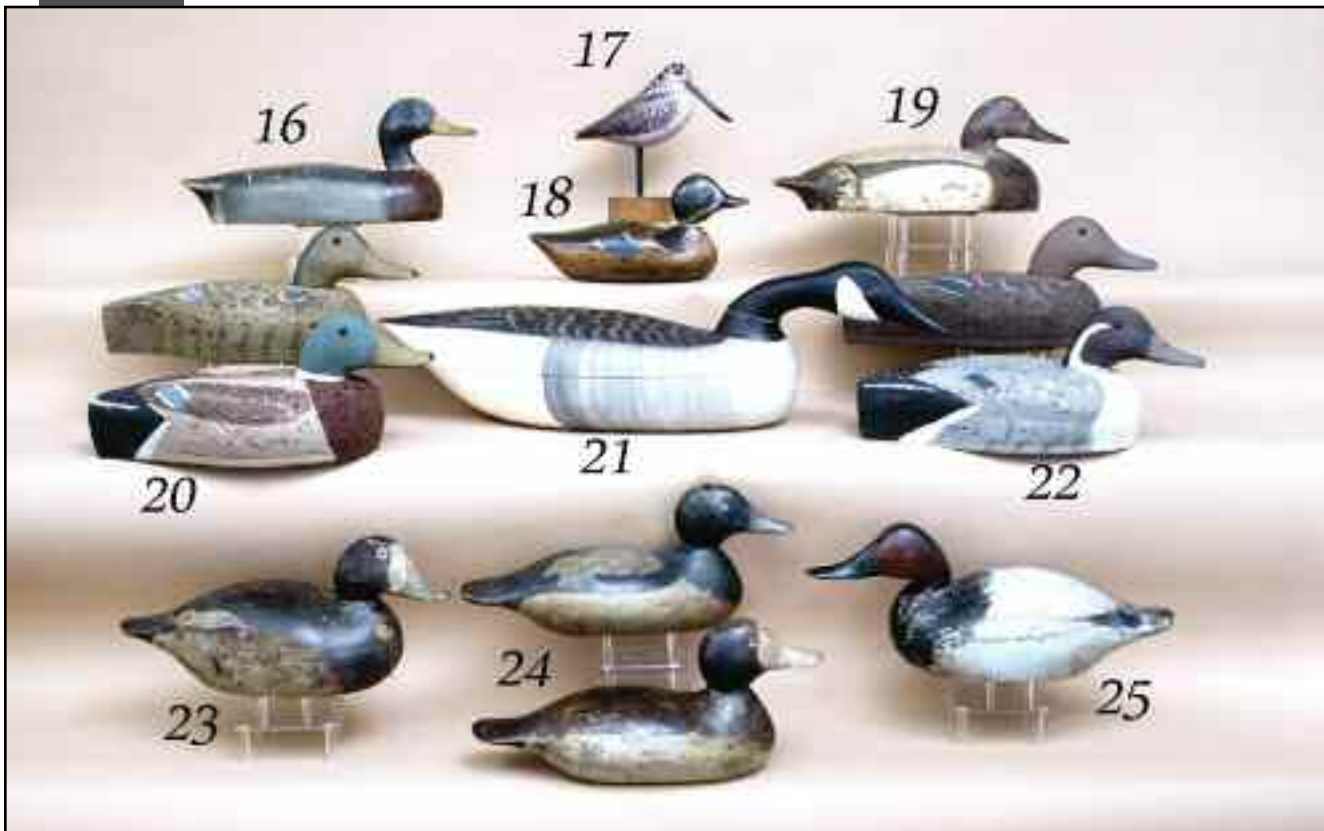
12 RARE PAIR OF WOOD DUCKS by the Wildfowler Decoy Company, Pt. Pleasant, NJ. Near-mint original paint and unused condition. "Cat's eyes" paint. Carved from cedar or pine. Hollow construction. Very crisp brand and Perkins collection stamp on bottom. See *Wildfowler Decoys* by Cowan and LaFountain and the dust cover of *North American Factory Decoys* by Trayer. 1500-1800

13 MINIATURE BLUEBILL by Larry Tawes, carved in the Crisfield, MD, style. Together with a one-half size MALLARD DRAKE by the Wildfowler Decoy Company. Good overall condition. 75-125

14 BRANT by the Wildfowler Decoy Company, Pt. Pleasant, NJ. Horner model in excellent original paint and very good condition. Old repair to bill tip. Marked XXXII denoting Hillman/Birdsall rig. 100-200

15 RARE GULL by the Wildfowler Decoy Company, Pt. Pleasant, NJ. Very good original paint with some paint rubs to head. Hollow carved. Retains full keel, weight and crisp brand. See *Wildfowler Decoys* by Cowan and LaFountain, pg. 101. 500-600





16 MALLARD DRAKE by the Wildfowler Decoy Company, Old Saybrook, CT. Good original paint with some wear. Hollow bottom board model. Together with a **BLACK DUCK** by the Wildfowler Decoy Company, Old Saybrook, CT. Old working paint to body. Hollow bottom board model. 200-300

17 WOODCOCK by the Wildfowler Decoy Company, Pt. Pleasant, NJ. Excellent original paint by Marje Stafford. Structurally sound condition. Mounted on its original wood base bearing the Wildfowler ink stamp. Dated 1986. 100-150

18 BLUE WING TEAL DRAKE by the Mason Decoy Company, Detroit, MI. Standard grade with areas of repaint. 100-200

19 CANVASBACK DRAKE by the Wildfowler Decoy Company, Old Saybrook, CT. Very old working paint, possibly by the Ward Bros. Overall good condition. Keel removed. 75-125

20 RARE PAIR OF MALLARDS by the TUX DUX CO., Madison, CT. Excellent original paint and unused condition. Cork bodies with bottom boards and pint heads. Hen with factory stamp on bottom. See *North American Factory Decoys* by Trayer, pgs. 378-379. 100-200

21 CANADA GOOSE by Fredrick C. Brown, Barnegat Bay Decoys, Pt. Pleasant, NJ. Excellent original paint and good structural condition. Minor separation to body halves at seam and neck seam. Snakey head position. Signed and dated 1984 on bottom. 200-300

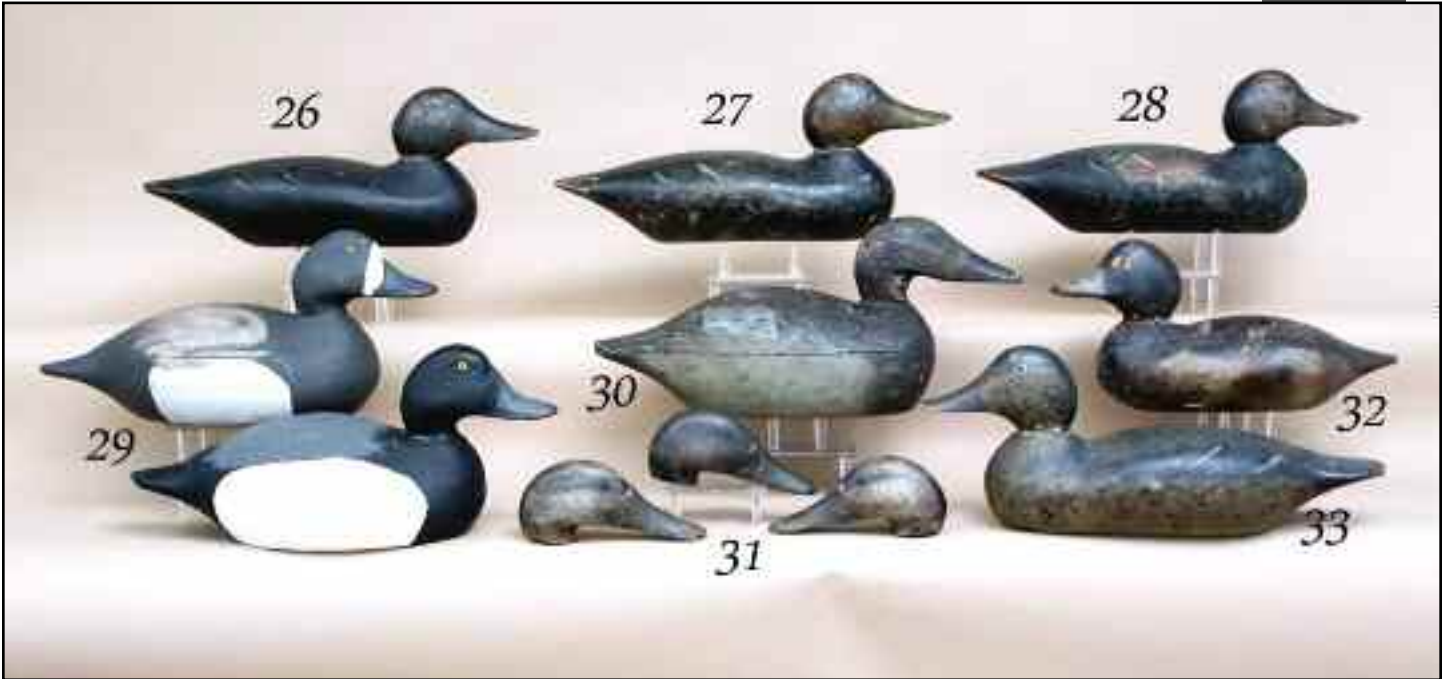
22 RARE PAIR OF PINTAILS by the TUX DUX CO., Madison, CT. Excellent original paint and unused condition. Cork bodies with bottom board and pine heads. Both with factory stamp on bottoms. See *North American Factory Decoys* by Trayer, pgs. 378-379. 100-200

23 BLUEBILL HEN by the Mason Decoy Company, Detroit, MI. Hollow Premier grade in good original paint exhibiting some in-use wear. Some separation at seam. 200-300

24 PAIR OF BLUEBILLS by the Mason Decoy Company, Detroit, MI. Standard grade, glass eye models. Both with worn original paint with possible minor touch up. 300-400

25 CANVASBACK DRAKE by the Mason Decoy Company, Detroit, MI. Premier grade in original paint with some touch up to areas. Hollow carved. Very good structural condition. Bottom weight removed. Minor seam separation. 500-700





26 BLACK DUCK by the Mason Decoy Company, Detroit, MI. Standard grade, glass eye model. Good original paint showing feather work and strong speculums. Structurally excellent with neck filler missing. One eye missing. Bottom weight removed. 200-300

27 BLACK DUCK by the Mason Decoy Company, Detroit, MI. Standard grade, glass eye model. Weathered original paint. 100-200

28 BLACK DUCK by the Mason Decoy Company, Detroit, MI. Standard grade, glass eye model in weathered original paint with possible touch up to neck. 100-200

29 PAIR OF BLUEBILLS by the Mason Decoy Company, Detroit, MI. Premier grade, hollow. Both in old working paint. Both retain bottom weights. 200-300

30 CANVASBACK DRAKE, possibly Dodge, restored condition. Together with a CANVASBACK HEN, William Pratt Co., Joliet, IL. Top grade. Appears to retain original paint with minor touch up to bill and head area. Hollow carved. 300-500

31 GROUP OF SIX BLACK DUCK HEADS, Mason Decoy Company, Detroit, MI. Premiere grade. Excellent original paint. 100-200

32 EARLY REDHEAD HEN by the Mason Decoy Company, Detroit, MI. Standard grade, tack eye model, with very good original paint showing good feather work on back. Some in-use wear with some loss to neck filler. Early model used at the Sedge Island Gun Club, Barnegat Bay, NJ. Bottom weight removed. Check on bottom. 200-300

33 MALLARD HEN by the Mason Decoy Company, Detroit, MI. Standard grade, glass eye model circa 1915. Very good original paint with rubs to the edges of bill and tail. Structurally very good with loss to approximately three-quarters of the neck filler. Check from back of neck to beginning of tail. Weights removed. 200-300



34 TWO BLUEBILL HENS by the Mason Decoy Company, Detroit, MI. Premier grade, hollow, in very old working paint. Both structurally good. Both retain bottom weights. 200-300 *

35 OVERSIZED BLACK DUCK by the Mason Decoy Company, Detroit, MI. Seneca Lake model in very weathered paint. Structurally good condition. 100-200 *

36 PINTAIL DRAKE by the Mason Decoy Company, Detroit, MI. Standard grade, glass eye model. Very weathered original paint. 100-200 *

37 PAIR OF MALLARDS by the Mason Decoy Company, Detroit, MI. Standard grade. Both retain some very weathered original paint with some touch up. 200-300 *

38 MERGANSER by the Mason Decoy Company, Detroit, MI. Repainted with bill repair. Together with a Stevens factory decoy, repainted. 200-300 *

39 BLUEBILL DRAKE, possibly by the Hayes Decoy Company, in weathered original paint. Retains glass eyes. 100-200 *

40 PAIR OF BLUEBILLS by the Mason Decoy Company, Detroit, MI. Premier grade, hollow. Both in old working paint. Both retain bottom weights. 200-300 *

41 BLACK DUCK by the Down East Decoy Company, in weathered original paint. Structurally good condition with filled check in bottom and wear to sides. 75-125 *

42 FACTORY BLACK DUCK in very old working paint. Structurally very good. Together with a GOLDENEYE DRAKE, New York, in good working paint and structural condition. 75-125 *





43 DOWITCHER by the Dodge Decoy Factory, Detroit, MI. Excellent original paint and very good structural condition. Old repair at mid-neck. Appears to retain original nail bill. An almost identical example can be seen in *Detroit Decoy Dynasty*, Sharp and Dodge, pg. 199. A rare and outstanding decoy. 6000-8000

44 VERY FINE CANADA GOOSE by the Mason Decoy Company, Detroit, MI, circa 1910. Very good original paint and structurally very good condition. Paint has minor wear to mid back and edges. Appears to have a factory repair to the lower right side with a piece inserted from breast to beginning of tail. There is a factory repair to bill tip. There appears to be a three-quarter inch wood piece inserted at neck to make it a high head model. Right eye may be a replacement. Bottom weights and rigging intact. This decoy has been used at the Sedge Island Gun Club, Barnegat Bay, in the Toms River area, New Jersey. A fine historic example of Mason factory decoys. 6000-9000





45 SPOTTED SANDPIPER by Ray Schill. Mint original paint and condition. Fine detailed feather work and intricate paint pattern. Signed on bottom. 75-125

46 LEAST SANDPIPER by Al Riehl. Mint original paint and condition. Detailed paint and feather work overall. Mounted on a custom base. Signed and dated 7/94. 100-150

47 SANDERLING by the Irvine Brothers, Margate, NJ. Excellent original paint and good feather detailed carving. Mounted atop a shell base. Signed and dated 3/89. 75-125

48 BANK SWALLOW by Al Riehl in excellent original paint and condition. Signed and dated 9/91. Small piece of bill tip missing. Together with a SANDPIPER by D. Hadley in excellent original paint and condition. Signed and dated 1971. 75-125

49 PAIR OF SEMI PALMATED SANDPIPERS by Andrew G. Theodore, Linwood, NJ. Both in excellent original paint. Both carved with split, raised wing tips. One with front piece of bill missing. Both mounted atop a driftwood base. Signed and dated 1977. 50-75

50 BLACK CAPPED CHICKADEE by William Cowen. Mint original paint and condition. Signed and dated 6/92. Together with a **SLATE COLOR JUNCO** by R. Schepis. Mint original paint and condition. Mounted on a driftwood base. Signed on bottom. 100-150

51 WESTERN SANDPIPER by William Cowen. Mint original paint and condition. Overall detailed feather carving. Mounted atop a sandy oyster base. Signed and dated 8-94. 100-150

52 WHITE-RUMPED SANDPIPER by Ray Schill. Mint original paint and condition. Detailed carved and painted work overall. Mounted atop a driftwood base. Signed and dated on bottom 75-125

53 SPOTTED SANDPIPER by Ray Schill. Excellent detailed original paint with fine feather carving. Mounted on a driftwood base. Signed on bottom. 75-125

54 CURLEW SANDPIPER by Ray Schill in mint original paint and condition. Relief-carved wings with detailed featherwork. Carved in a feeding posture. Signed on bottom. 75-125

55 RAIL by Al Riehl in mint original paint and condition. Relief-carved layered wings with fine feather work overall. Mounted atop realistic legs in a custom simulated marsh setting. Signed and dated 8/9 on bottom. 200-300

56 OUTSTANDING RENDERING OF A CROW AND TWO STARLINGS by Ronald Sabatini, Levittown, PA. All in near-mint original paint and condition. The crow with turned head and relief-carved raised wings and fluted tail. One starling in a calling attitude. Both with relief-carved wings and fluted tails. All mounted atop a custom base. All signed and dated '09. 500-700

57 DUNLIN by Al Riehl in excellent original paint and condition. A plump carving with extended raised wing tips. Mounted atop a custom base. Signed and dated 8/94. 100-200

58 YELLOWLEG by Ray Schill in mint original paint and condition. One wing outstretched. Carved feathers overall. Head turned as if preening. Mounted atop a driftwood base. Signed by maker. 200-300

59 FLYING YELLOW WARBLER by Al Riehl in mint original paint and condition. Outstretched wings perched upon a natural branch. Mounted atop a signed base. Together with LEAST SANDPIPER by Steele in a feeding position. Mint original paint and condition. Signed and dated '84, on a custom weighted base. 100-150

60 SHOREBIRD IN FLIGHT in mint original paint and condition. Elaborate paint and carving detail. Wings fully extended and tail spread. Mounted atop a custom base. Signed FGC and dated '06. 100-200

61 TUFTED TIT MOUSE by E.F. Muehlmann. Fair original paint with some staining and spotting. Structurally very good with raised split wing tips. Mounted on a branch. Signed and dated 4/71. 75-125

62 RUDDY TURNSTONE in mint original paint and condition. Plump carving with raised wing tips. Mounted atop a custom base. Signed and dated on bottom. Together with a CURLEW by M. Stafford, in mint original paint and condition. Raised split tail. Mounted atop a driftwood base. 75-125

63 KILLDEER by Ray Schill in exceptional mint paint and condition. Detailed feather carving overall. Raised split wing tips. Mounted on a custom base. Signed on bottom. 100-200





64 OVERSIZED BLUEBILL DRAKE by Caleb R. Marter, Jr., Burlington, NJ. Excellent original comb-detail paint. Hollow competition grade with full keel. Branded CR MARTER JR under competition tape. 200-300

65 FINE OVERSIZED BLACK DUCK by Caleb R. Marter, Jr., Burlington, NJ. Hollow cork construction with pine bottom board and full gunning keel. Excellent original paint and structurally sound condition. Branded CR MARTER JR on bottom. 100-200

66 RED HEAD DRAKE by Caleb R. Marter, Jr., Burlington, NJ. Competition gunning grade in excellent comb-feather paint. Hollow carved with full keel. Branded CR MARTER JR on bottom. 100-200

67 EXCEPTIONAL RED HEAD DRAKE SHOOTING DECOY by Caleb R. Marter, Jr., Burlington, NJ. Excellent original paint and structurally sound condition. Hollow carved with bottom pad weight and leather rigging. Snug-head model with fine comb paint detail. 200-300

68 FINE CANVASBACK DRAKE by Caleb R. Marter, Jr., Burlington, NJ. Exceptional original paint and unused condition. Competition grade, hollow carved with inlet bottom weight. Branded CR MARTER JR. 200-300

69 FINE RED HEAD DRAKE by Caleb R. Marter, Jr., Burlington, NJ. Excellent original paint and fine structural condition. Hollow carved with inlet bottom weight. Branded CR MARTER JR on bottom. 200-300

70 FINE RED HEAD DRAKE by Caleb R. Marter, Jr., Burlington, NJ. Low-head model in original paint. Hollow carved in good structural condition. Raised wing carving and fluted tail. Small area of paint missing on tail. 100-200

71 BLUEBILL DRAKE by Caleb R. Marter, Jr., Burlington, NJ. Competition grade shooting decoy in excellent original paint and unused condition. Hollow carved with inlet bottom weight. Branded CR MARTER JR. 100-200

72 CANVASBACK DRAKE by Caleb R. Marter, Jr., Burlington, NJ. Excellent original paint and unused condition. One of his first carvings. Hollow carved, branded CR MARTER JR on bottom. 200-300



73 EARLY BLACK DUCK by Caleb R. Marter, Sr., Burlington, NJ. Very old working paint by Marter. Structurally good condition. Low head, raised carved wings and cupped fluted tail. Bottom weight and owner's tag in place. 100-200

74 VERY EARLY BLUEBILL DRAKE by Caleb R. Marter, Sr., Burlington, NJ. Very old working paint by Marter with some paint losses. Hollow carved with raised wings and fluted tail. Bottom pad weight. Rigging intact. 100-200

75 EARLY BLACK DUCK by Caleb R. Marter, Sr., Burlington, NJ. Very old working paint by Marter. Structurally good condition. Low head, raised carved wings and cupped fluted tail. Bottom weight and owner's tag in place. 100-200

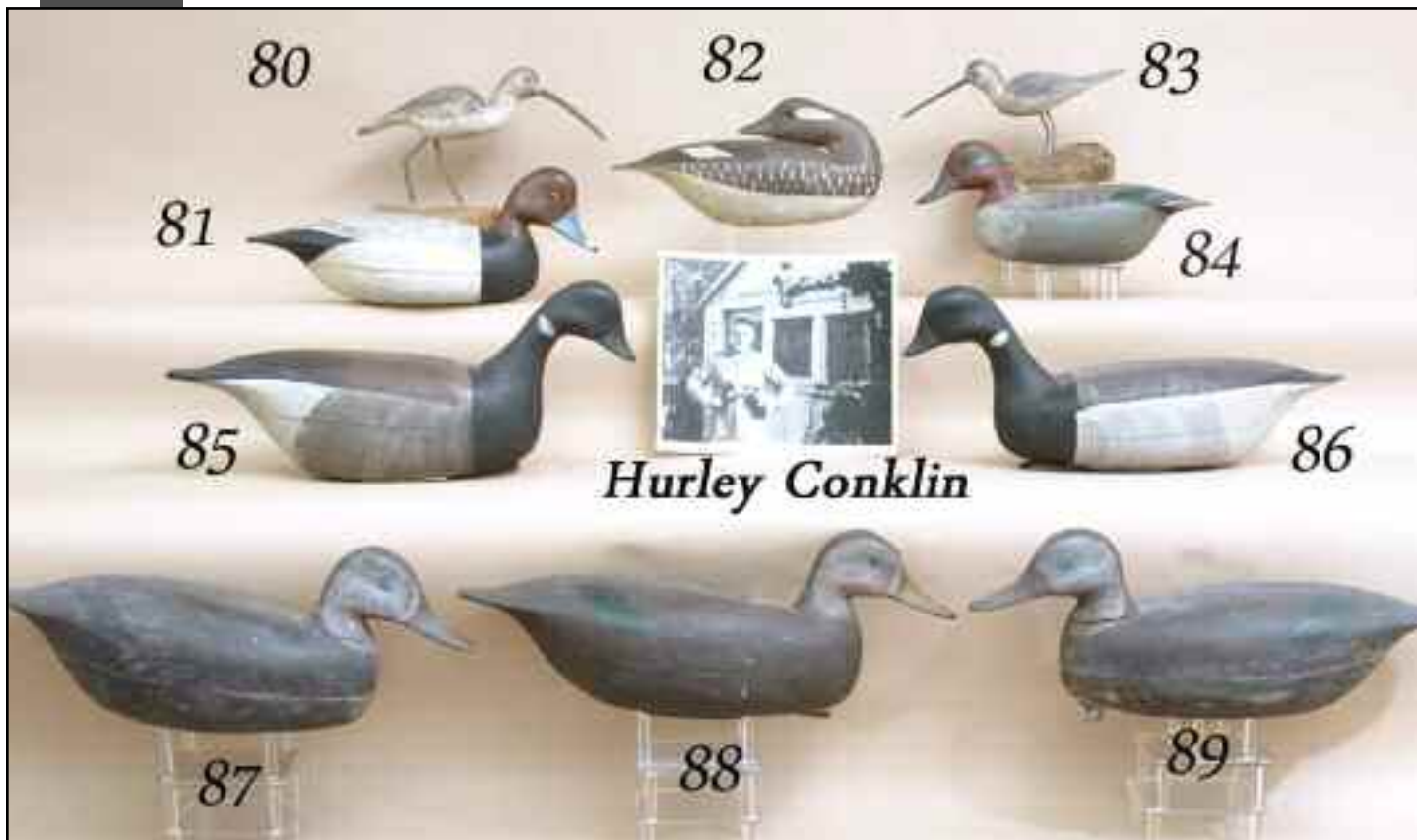
76 TWO BLUEBILL DRAKES, early Delaware River. Very old working paint. Both hollow carved, snug head models. Both structurally excellent. Both retain bottom weights and riggings. 300-500

77 VERY EARLY PAIR OF BLUEBILLS by Caleb R. Marter, Sr., Burlington, NJ. Possibly original paint. Both in structurally excellent condition. Both hollow carved. Both retain bottom weights. Drake retains owner's tag. Drake appears to have a preservative applied. Both with raised wing and fluted tail carving. 300-500

78 VERY EARLY BLACK DUCK by Tom Fitzpatrick, Delanco, NJ. Early working paint, possibly by Jess Heisler. Hollow carved with raised wing detail and fluted tail. Snug head position. Weight removed. 200-300

79 VERY EARLY BLACK DUCK by Tom Fitzpatrick, Delanco, NJ. Early working paint, possibly by Jess Heisler. Hollow carved with raised wing detail and fluted tail. Snug head position. Weight removed. 200-300





80 VERY EARLY SHOREBIRD by Hurley Conklin, Manahawkin, NJ. Excellent original paint and condition. Mounted atop a driftwood base. 100-200

81 VERY EARLY REDHEAD DRAKE by Hurley Conklin, Manahawkin, NJ. Excellent original unused paint and condition. Hollow carved swimmer. Fine comb painting. Pre-brand. 200-300

82 VERY FINE BUFFLEHEAD HEN SLEEPER by Hurley Conklin, Manahawkin, NJ. Excellent original paint and unused condition. Hollow carved. Very rare pre-brand Conklin sleeper. 200-300

83 VERY EARLY SHOREBIRD by Hurley Conklin, Manahawkin, NJ. Excellent original paint and condition. Mounted atop a driftwood base. 100-200

84 VERY EARLY GREEN WING TEAL by Hurley Conklin, Manahawkin, NJ. Excellent original paint and unused condition. Hollow carved, pre-brand model. 200-300

85 VERY EARLY BRANT by Hurley Conklin, Manahawkin, NJ. Excellent original paint and sound structural condition. Hollow carved, pre-brand model. Pad weight and rigging intact. 200-300

86 VERY EARLY BRANT by Hurley Conklin, Manahawkin, NJ. Excellent original paint and sound structural condition. Hollow carved, pre-brand model. Pad weight and rigging intact. 200-300

87 BLACK DUCK by Hurley Conklin, Manahawkin, NJ. Very good original paint with some minor wear. Hollow shooting model. Pre-brand. Retains bottom pad weight. 200-300

88 VERY EARLY BLACK DUCK by Hurley Conklin, Manahawkin, NJ. Excellent original paint and condition. Hollow carved. Bottom pad weight and rigging. Pre-brand model. 200-300

89 BLACK DUCK by Hurley Conklin, Manahawkin, NJ. Good original paint with some in-use wear. Structurally very good. Hollow carved. Hairline crack in neck. Retains bottom pad weight. Pre-brand gunning model. 200-300



90 CANADA GOOSE, New Jersey, in excellent original paint and condition. Hollow carved, pinch-breast preener with incised wing tips and fluted tail. Retains large pad weight and rigging. 300-400

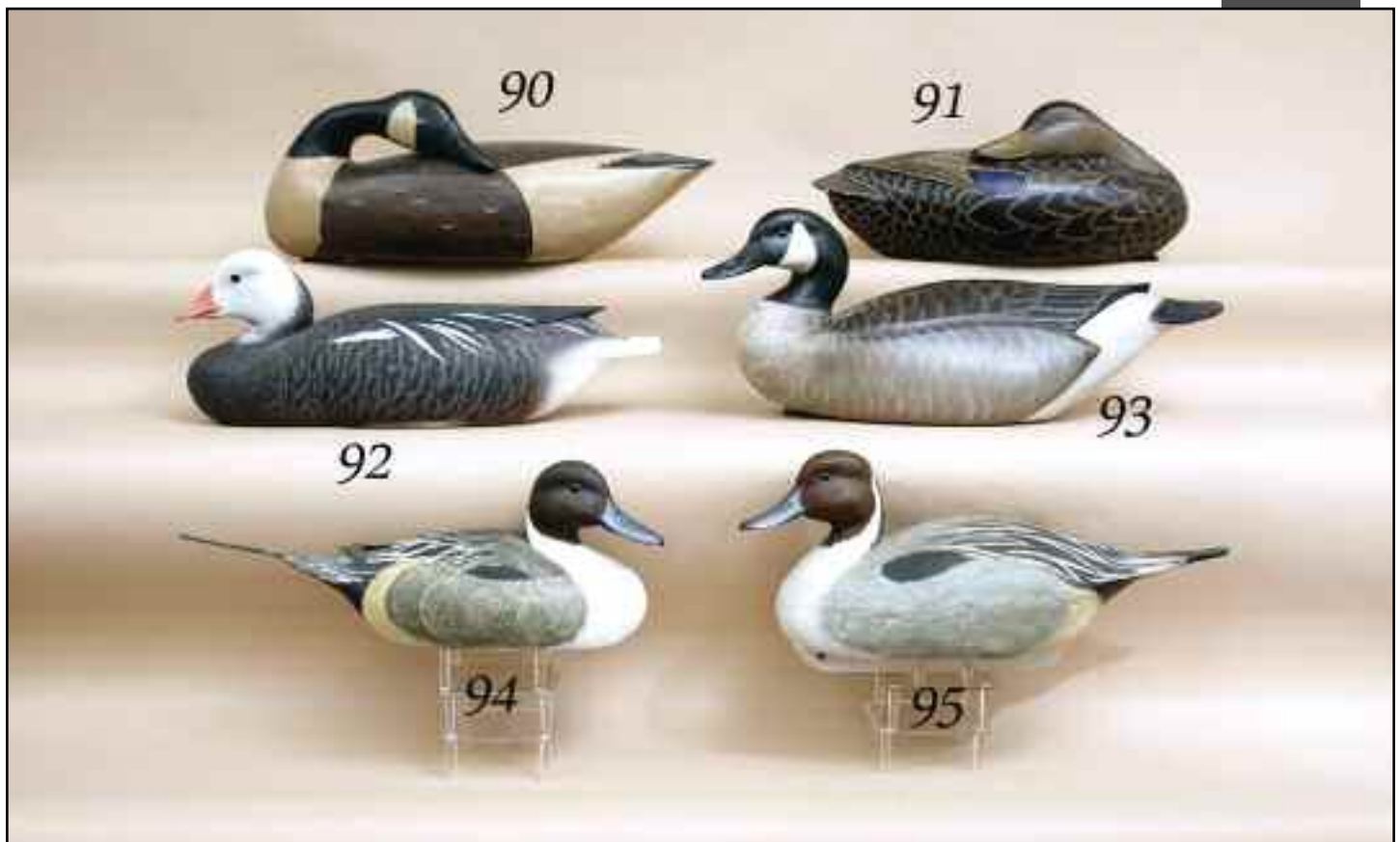
91 OVERSIZED BLACK DUCK by Glenn H. Cooke, Pt. Pleasant, NJ. Excellent original paint with detailed feather work overall. Hollow carved sleeper with raised relief carved wing tips and fluted tail. Retains weight and rigging. Signed on bottom. 300-500

92 RARE BLUE GOOSE by Herb Miller, Beach Haven, NJ. Excellent original paint with detailed feather work and head ticking. Structurally very good with deep ice groove and raised wing detail. Broad carved fluted tail. Head turned slightly right. Hollow carved with bottom pad weight. Branded and signed by maker. 500-700

93 OUTSTANDING CANADA GOOSE by Shaun Sutton, Paulsboro, NJ. Near-mint original paint and unused condition. Fine detailed feather paint with excellent relief-carved wing detail. Carved feathers with broad carved fluted tail. Head turned slightly left with fine bill carving. Hollow carved. Retains bottom weight with carver's stamp and signature. 600-800

94 FINE PINTAIL DRAKE by George Murray, Beverly, NJ. Near-mint original paint and condition. Hollow carved with raised, relief wings and carved flowing wing and tail feathers and elongated sprigs. Signed and dated 1977 with dedication. 200-300

95 PINTAIL DRAKE by George Murray, Beverly, NJ. Excellent original paint and condition. Competition gunning model with full keel. First and third place winner in Burlington County Competition. Cork body construction. 200-300





96 RARE GREEN HERON by Ronald Sabatini, Levittown, PA. Near-mint original paint and condition. Relief-carved wings. Mounted atop a custom base. Signed on bottom. 100-200

97 EARLY CROW by Jamie P. Hand, Cape May Court House, NJ. Good original paint and condition. Solid construction with relief-carved wings and split tail. Head turned left. Branded *JPH* on bottom. 100-200

98 FLYING WOOD DUCK DRAKE by Jamie P. Hand, Cape May Court House, NJ. Oversized and hollow carved with outstretched cupped wings and elongated neck. Near-mint original paint and condition. Branded *JP HAND* on bottom. 300-500

99 TWO MINIATURE PLOVERS by Russ Allen, Galloway, NJ. Both in near-mint original paint and condition. The pair mounted on an antique wood plaque. 100-200

100 GROUP OF TEN DUCK AND GAME CALLS by Olt, Faulk and others. Also, six additional calls in boxes. Also included is a Remington weather thermometer. 100-200

101 GROUP OF EIGHT GAME CALLS consisting of Faulks, Rhodes, Olt, Yentzen and Talk to a Duck. Seven with boxes. Some unused, all in good condition. 200-300

102 HOODED MERGANSER DRAKE in weathered original paint and good structural condition. Together with a **PLOVER** and a **RUDDY TURNSTONE** by Gary Giberson. Both in good original paint and condition. 100-200

103 TWO-MASTED SCHOONER, *Katherine Conklin*, completely hand built. Forty-eight inches, tip to stern. Retains most of its rigging. Atop a custom cradle. Complete with deck rigging and wheel house. 500-800

104 PAIR OF PEEPS by Steve Morey, Tuckerton, NJ. Mint original antiqued paint and condition. Both mounted atop custom bases. Both with carved *M* in bottoms. 75-150

105 SET OF BOOK ENDS by H.V. Shourds, Seaville, NJ. Each end with a **SANDERLING** affixed to each bookend. Both bases signed and dated 1970. The shorebirds are in excellent original paint and condition. 200-300

106 GROUP OF FOUR BOOKS consisting of *Factory Decoys* by Delph, *Connecticut Decoys* by H. Chitwood, *Decoys* by G. Starr and *Factory Decoys* by H. Fleckenstein. All in very good condition with dust jackets. 100-200

107 FOUR BOOKS consisting of the *Outlaw Gunner* by H. Walsh, *New Jersey Decoys* by H. Fleckenstein, *American Bird Decoys* by W. Mackey and *The Decoy as Art* by Warner and White. All in good condition with dust jackets. 100-200



108 GROUP OF EIGHT BOOKS AND PAMPHLETS. Books include *North American Survey* by G. Kangas, *The Decoy Collectors Guide*, 1963-65, and six soft cover pamphlets. 50-75

109 GROUP OF FOUR BOOKS consisting of *BIRDS OF THE EASTERN FOREST*, Vols. 1 and 2, by Livingston, *DUCKS IN THE WILD* by P. Johnsgard and *SHOREBIRDS* by A. Richards. All in good condition. All with dust jackets. 50-100

110 GROUP OF FOUR BOOKS consisting *A Gathering of Shore Birds* by H. Hall, *The Duck Huntingest Gentleman* by K. Russell, *The Wind Birds* by P. Matthieson and *The Ways of Waterfowl* by R. Bishop. All with dust jackets. All in very good condition. 100-200

111 GROUP OF FOUR BOOKS consisting of *Mason Decoys* by, Holcrest Publications, *Shang* by Dixon Merkt, *The Atlantic Flyway* by Elman/Osborne, *Decoys* by Kangas. All in good condition with dust jackets. 100-200

112 GROUP OF SIX HUNTING-RELATED BOOKS. Some with dust jackets. All in good condition. 75-125

113 EIGHT HUNTING-RELATED BOOKS. All but one with one with dust jackets. All in good condition. 50-75

114 CINNAMON TEAL by World Champion carver Jim Sprankle. Exceptional near-mint original paint. Rare cork body model with deep relief wing detail. Fine detailed head carving. Structurally sound with competition keel intact. An outstanding example of Mr. Sprankle's work. 500-700

115 MALLARD DRAKE HEAD in excellent original paint and condition. Structurally sound. Mounted on an oval wood plaque for hanging. Stamp on back reads: *New London Industries, Chicago, Il.* 25-35

116 GROUP OF DECOY HEADS, New Jersey. Two are unfinished. 30-50

117 WATERCOLOR ON PAPER by Gerard R. Hardenbergh, Bay Head, NJ, of a tranquil marsh scene at sunset, depicting birds in flight and out islands. Some minor foxing to edges. Signed LL and dated 1900. Image size is 5 1/4" x 9 1/4". 400-600

118 PAIR OF ONE-QUARTER SIZE CANADA GEESE by Bill Faix, North East, MD. Excellent original paint and structurally sound condition. Hen is a feeder. Branded on bottom. 75-125

119 GROUP OF THREE EARLY SHOREBIRDS by H.V. Shourds, Seaville, NJ. All in excellent original paint and condition. All in various poses. All with relief carved raised and split wings. All atop wood bases. One signed. 200-300

120 DECORATIVE CANADA GOOSE by Thomas Langan, Roslyn Harbor, NY. Original antiqued paint and fine structural condition. Deep relief-carved wings, tips, tail and head detail. High-head turned boldly right. 200-300

121 THREE WHIMSICAL ONE-THIRD SIZE CARVINGS by J. Ellis McPhail, consisting of a merganser a mallard and a teal. All signed on bottom with dates ranging from 1968 - 1970. 200-300



122 TWO FINE AND RARE CURLEWS by Joe Tom Cranmer, Manahawkin, NJ. Very good original paint with some possible very early minor touch up. Both with full plump bodies with some scratch feather paint remaining. One with a typical fine check in neck. Both have professionally replaced bills. For a rigmate, see *Shorebird Decoys* by H. Fleckenstein, Jr., Color Plate LXIX, page 99. An extremely rare pair of New Jersey curlews in fine condition. 6000-9000

123 VERY EARLY MALLARD HEN by R. Madison Mitchell, Havre de Grace, MD. Excellent original paint with very minor flaking to bill. Structurally sound with minor chip from tail edge. Lifting of knot grain to left side. Retains original weight, rigging ring and staple. Appears to be in unused condition. Retains round nail in underside of tail. Fine early Upper Bay decoy. 200-300

124 PAIR OF EARLY BLUEBILLS by Charles Joiner, Betterton, MD. Both in excellent original paint. Both structurally sound with planed bottoms for mantle display. Very early pair of fine bluebills from the Chesapeake Bay. 300-500

125 EARLY CANVASBACK DRAKE by Charlie Joiner, Betterton, MD. Very good original paint and structural condition. Typical mid-neck hairline crack. Retains weight, ring and staple. 200-300

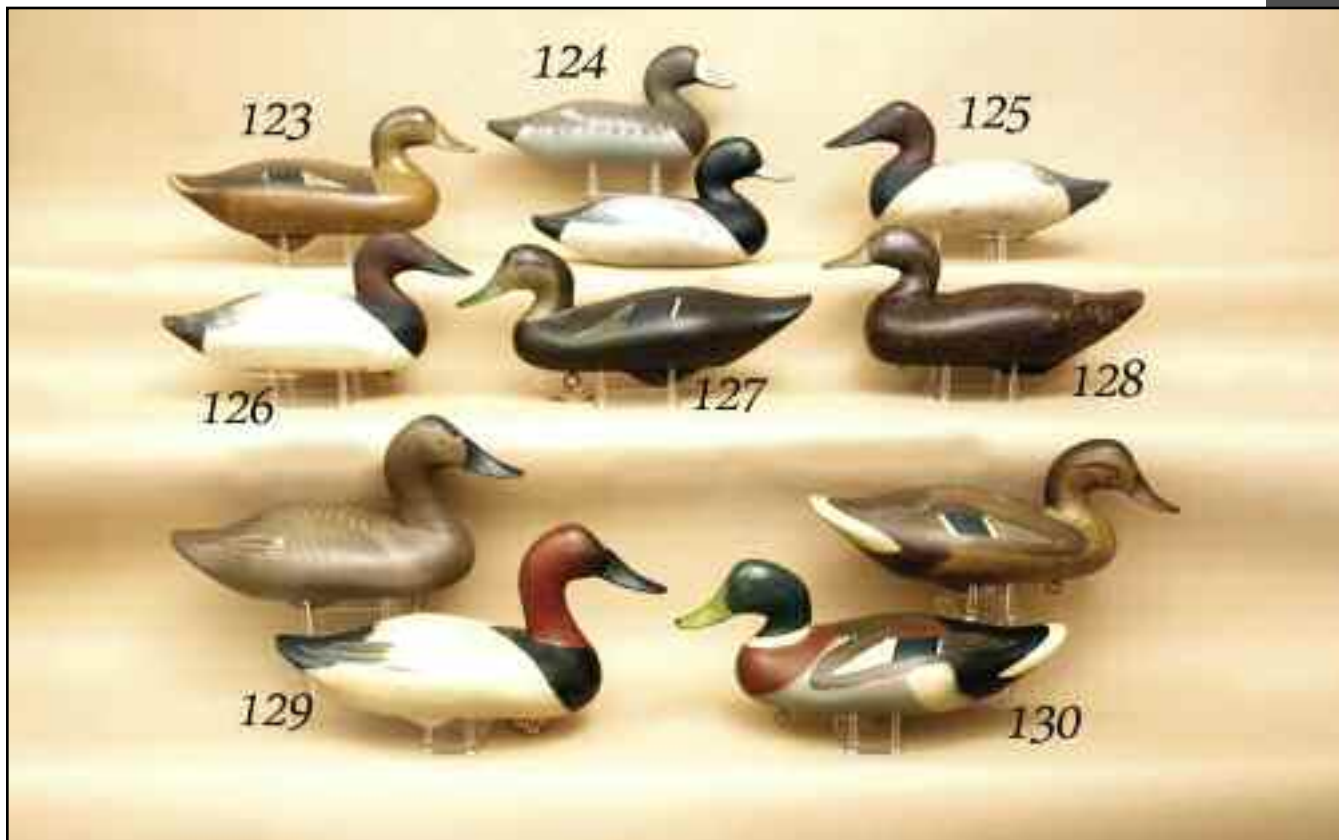
126 EARLY CANVASBACK DRAKE by Charlie Joiner, Betterton, MD. Very good original paint and structural condition. Typical mid-neck hairline crack. Retains weight, ring and staple. Lathe indentations on rear tail. 200-300

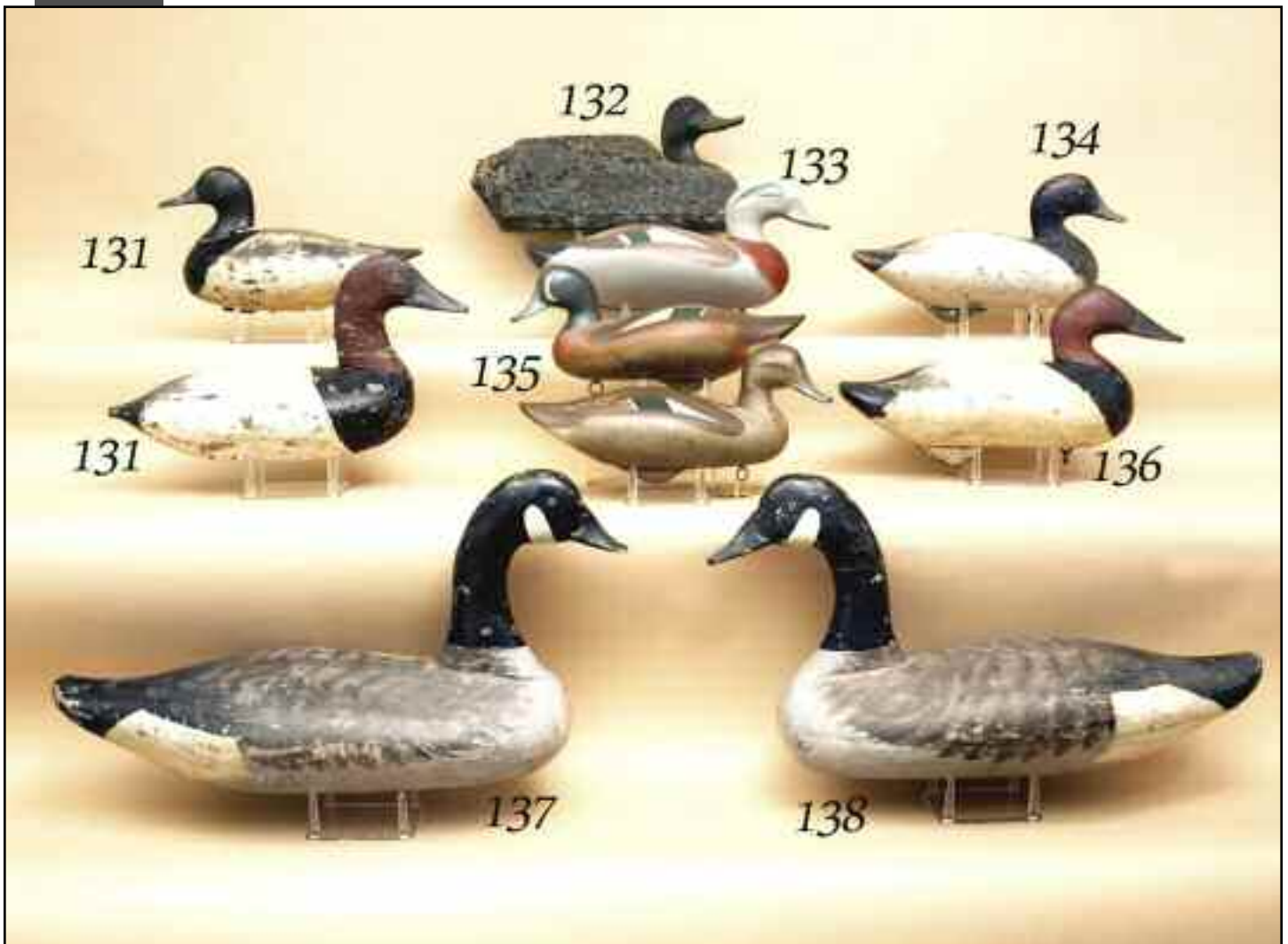
127 FINE BLACK DUCK by Jim Pierce, Havre de Grace, MD. Excellent original paint and unused condition. Head turned slightly left. Retains bottom weight, ring and staple. Stamped *P* and *JP*. 200-300

128 VERY EARLY BLACK attributed to Clarence Webb, Havre de Grace, MD, area. Excellent original scratch feather paint, showing some in-use wear. Structurally very good with an area of lifted grain at rear left side. Retains original weight, rigging and u-nail. 200-300

129 EARLY PAIR OF CANVASBACKS by Jim Pierce, Havre de Grace, MD. Excellent original paint and unused condition. High-head models. Both retain bottom weights and rigging. Both with stamped *P* and *JP*. 300-500

130 FINE PAIR OF MALLARDS by Jim Pierce, Havre de Grace, MD. Excellent original paint and unused condition. Both retain bottom weights and rigging. Both are stamped with *P* and *JP*. Hen with old upper bill repair. 300-400





131 EARLY UPPER BAY HIGH-HEAD CANVASBACK in very weathered working paint. Together with a **BLUEBILL DRAKE**, possibly Heinfield, in old working paint. Weight removed. 100-200

132 EARLY BLACK DUCK by Josiah Franklin Travers, Berlin, MD. Weathered original paint and structurally good condition with some rubs and a small loss to cork at tail. Bottom board intact. Nice head carving. 50-100

133 WIDGEON DRAKE from the Upper Bay. An early model in original paint and unused condition. Retains weight and rigging. 75-125

135 EARLY PAIR OF BLUE WING TEAL by Jim Pierce, Havre de Grace, MD. Excellent original paint and unused condition. Retain weights and rigging. Both with *JP* and *P* stamps. 300-400

136 EARLY UPPER BAY CANVASBACK DRAKE in very old working paint and structurally good condition. Classic form, possibly an early Mitchell. Retains bottom weight and rigging. 50-75

137 EARLY CANADA GOOSE attributed to Charles Joiner, Betterton, MD. Original paint with touch-up to gray bottom. Made as a floater and stick-up. Bottom weight removed. Old repair to bill. 100-200

138 EARLY CANADA GOOSE attributed to Charles Joiner, Betterton, MD. Original paint with touch-up to gray bottom. Made as a floater and stick-up. Bottom weight removed. Typical hairline check at mid-neck. Old bill repair. 100-200



139 CANADA GOOSE attributed to R. Madison Mitchell, Havre de Grace, MD. Very good original paint and unused condition. Retains bottom weight, ring and staple. Notation on bottom reads: *Made by R. Madison Mitchell for Castle Haven Gun Club, 1951.* 300-400

140 VERY FINE SNAKEY-HEAD SWAN by R. Madison Mitchell, Havre de Grace, MD. Excellent original paint and unused condition. Bears some minor shelf scuffs and a very small dent to left side of tail. For an example and additional information see *Decoys of the Susquehanna Flats* by Evans J. McKinney. Signed and dated 1984 in electric pen. 1500-2500

141 VERY EARLY CRISFIELD, MARYLAND, GOOSE, in old working paint and structurally good condition. Retains bottom weights. 200-300



142 BLACK BREAST PLOVER by Delbert "Cigar" Daisey, Chincoteague, VA. Mint original paint and condition. Relief-carved body. Raised, split wing tips and drop tail. Outstanding feather paint detail overall. Branded CIGAR and signed on bottom. Mounted on a clam shell base that is signed with paper label attached. 300-400

143 BLACK BREAST PLOVER by Delbert "Cigar" Daisey, Chincoteague, VA. Mint original paint and condition. Relief-carved body. Raised, split wing tips and drop tail. Outstanding feather paint detail overall. Branded CIGAR and signed on bottom. Mounted on base. 300-400

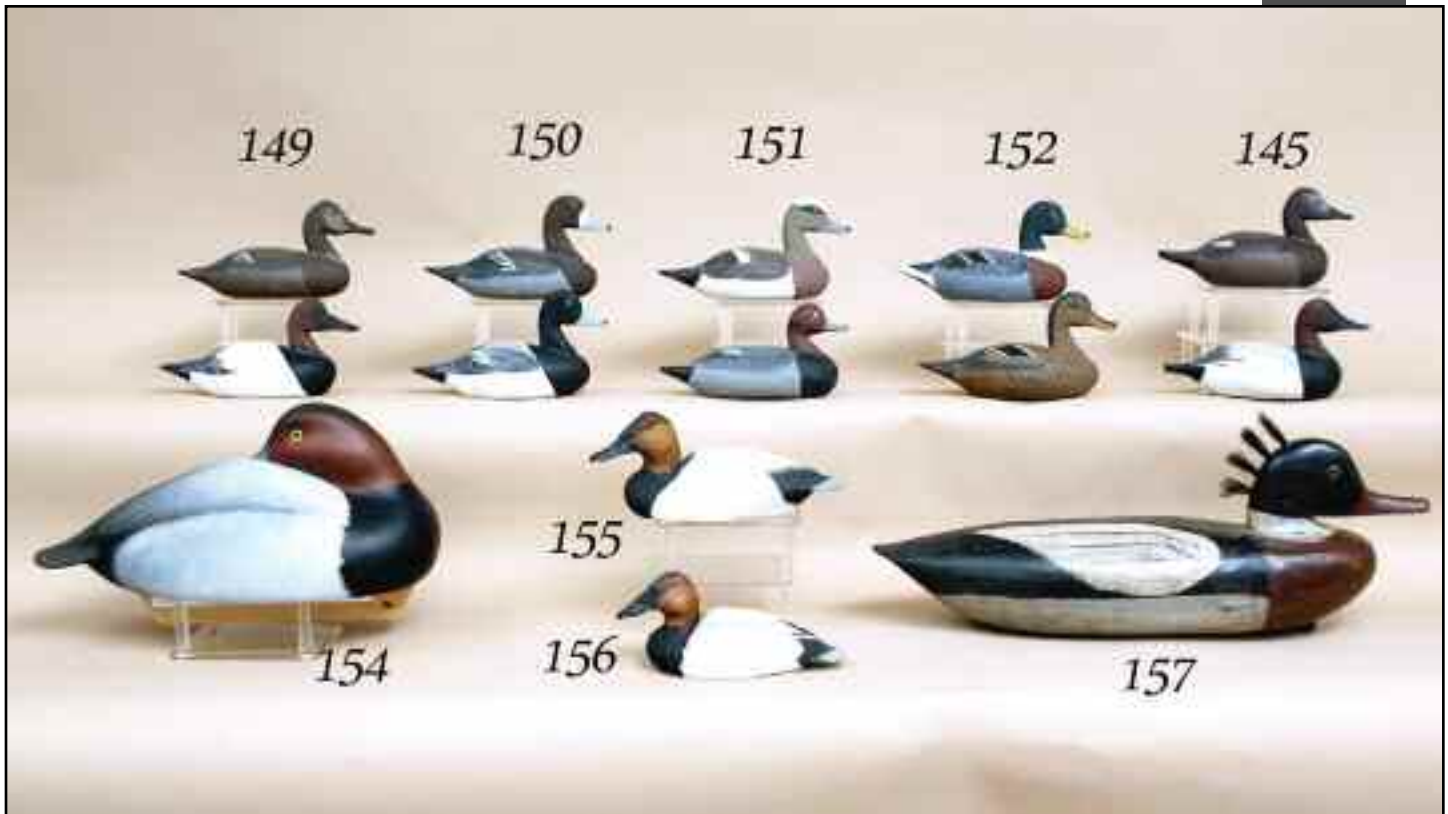
144 SHOREBIRD by Delbert "Cigar" Daisey, Chincoteague, VA. Original paint and condition. Relief-carved wings and split tail. Branded and signed. Mounted on a clam shell base that is signed with maker's paper label. 200-300

145 FEEDING SHOREBIRD by Delbert "Cigar" Daisey, Chincoteague, VA. Mint original paint and condition. Relief-carved wings extending to split wing tips and a drop tail. Outstanding painted feather detail. Branded and signed. Mounted on a clam shell with carver's label. 300-400

146 FINE COOT DECOY by Delbert "Cigar" Daisey, Chincoteague, VA. Near-mint original paint and unused condition. Fine carved wing detail and carved fluted tail. Carved in a swimming position. Branded CIGAR. Signed with inscription *HUNTING DECOY COOT*. 300-400

147 YELLOWLEG by Delbert "Cigar" Daisey, Chincoteague, VA. Mint original paint and condition. Relief-carved wings with raised split tips and drop tail. Low-head, plump decoy with fine paint detail. Branded and signed. Mounted on a clam shell base with signature and notation *LESSER YELLOWLEG*. 300-400

148 RUDDY DUCK HEN by Delbert "Cigar" Daisey, Chincoteague, VA. Mint original paint and unused condition. Excellent feather detail to back and broad fluted tail. Branded CIGAR with the carver's name and notation *FEMALE RUDDY HUNTING DECOY*. 300-400



149 ONE-THIRD SIZE PAIR OF CANVASBACKS by Capt. Jess Urie, Rock Hall, MD. Near-mint original paint and structurally very good condition. Some glue residue at base of hen's neck. Both signed on bottoms. 75-125

150 PAIR OF ONE-THIRD SIZE BLUEBILLS by Capt. Jess Urie, Rock Hall, MD. Near-mint original paint and structurally excellent condition. Fine early pair. Both signed on bottoms. 75-125

151 EARLY ONE-THIRD SIZE REDHEAD DRAKE by Capt. Jess Urie, Rock Hall, MD. Near-mint original paint and condition. Signed and dated 1964. Together with a WIDGEON DRAKE in very good original paint with some very minor spotting. Signed on bottom. 75-125

152 PAIR OF ONE-THIRD SIZE MALLARDS by Capt. Jess Urie, Rock Hall, MD. Near-mint original paint and condition. Very early excellent example of this maker's work. Signed on bottom. 75-125

153 PAIR OF ONE-THIRD SIZE CANVASBACKS by Capt. Jess Urie, Rock Hall, MD. Excellent original paint with some minor areas of sap bleed on breasts. Both structurally excellent. Nice early pair. 75-125

154 SLEEPING RED HEAD DRAKE by Oliver "Tuts" Lawson, Crisfield, MD. Mint original paint and unused condition. Fine paint blending. Competition grade with keel intact. Made for the Connecticut Audubon Society. Signed and dated 1982. 1200-1400

155 ONE-THIRD SIZE CANVASBACK DRAKE by Dan Brown, Salisbury, MD. Near-mint original paint and structurally excellent condition. Finely detailed feather carving. Relief-carved wings and raised, crossed wing tips and fluted tail. Signed and dated 1988. 200-300

156 ONE-QUARTER SIZE CANVASBACK DRAKE by Dan Brown, Salisbury, MD. Mint original paint and structurally excellent condition. Very fine detailed carving overall. Relief-carved wings and fluted tail. Signed and dated "00" on bottom. 200-300

157 RED-BREASTED MERGANSER DRAKE, possibly Virginia. Very good old working paint and good structural condition. Horse hair crest. Retains bottom weight and thong. 200-300



158 EARLY SWAN by John Vickers, Cambridge, MD. Good original paint showing a fine patina. Some minor in-use wear. Solid body with high head. Never weighted. Retains rigging swivel. Fine early example of Vicker's work. See *Chesapeake Bay Decoys* by R.Richardson for additional information. 1200-1500



158A GROUP OF THIRTEEN SCULLING OARS, ROWING OARS AND PADDLES. All in vintage condition. Found and used with the boat offered in the following lot. 200-300



158B VINTAGE SCULLING BOAT, attributed to Jess Heisler, directly from a Delaware River estate. A nearly identical example is shown on page 87 of *Working Decoys of the Jersey Coast and Delaware River* by Kenneth L. Gossner. Very good condition for its age. 600-800 (No shipping available)





159

159 RARE AND FINE EARLY BRANT by Charles Birch, Willis Wharf, VA. Excellent original paint and unrigged condition. Structurally excellent condition with a very old mid-neck check. Some paint loss to underside of tail and some shelf scuffs to underside of bottom. Good bar feather work to sides and feather detail to back. Retains original eyes. For a similar example, see *Southern Decoys* by H. Fleckenstein, pgs. 133-137 and dust jacket. An outstanding and exceptional decoy by this maker. 10000-15000



159a

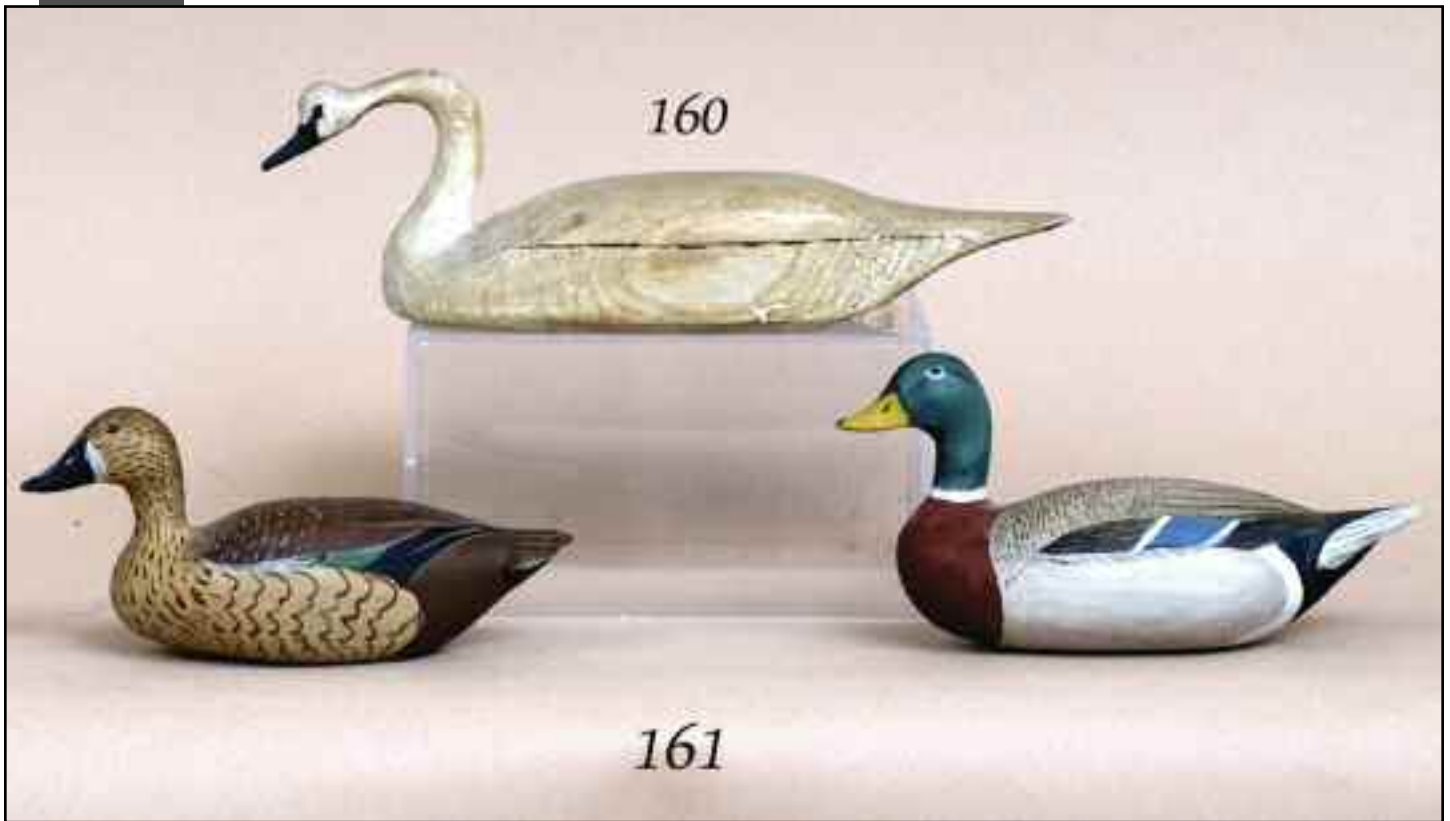
159b



159a detail

159A EARLY CANVASBACK DRAKE by Lee Dudley, Knotts Island, ND, circa 1880-90. Very old weathered working paint and very good structural condition. Old crack at mid-neck and hairline checks in breast. Approximately one-half of the bill is a replacement. The bottom weights have been removed. Retains every crisp LD brand on bottom. This decoy is part of the shooting rig used at the Pocahontas Gunning Club, Back Bay, VA. This decoy, together with four others, were known to be part of the gunning rig used by Edward L. Maher, secretary of the club. For additional information and rigmate, see *Gunnin' Birds* by Kroghie Andresen, pgs. VI, 80 and 81. 15000-18000

159B VERY EARLY CANVASBACK DRAKE, possibly Lower Delaware River or Port Deposit, MD, area. Very good original paint showing some in-use wear and minor flaking to paint. Structurally excellent. Solid carved with inlet bottom weight. The bill is carved with mandible serrations. This decoy is a fine example of lower Delaware River or Susquehanna River carving. 3000-5000



160 EARLY MINIATURE SWAN, probably Maryland, in very good original paint showing a fine patina. Carved with an aggressive head position. Structurally very good with a check to the left side. Early miniature swan. 200-300

161 PAIR OF VERY FINE MINIATURE MALLARDS by Lloyd Sterling, Crisfield, MD. Both with excellent detailed original paint. Both with heads turned slightly left. Both with a fine patina. Both signed on bottoms. 600-900

162 EXTREMELY FINE AND RARE PAIR OF MINIATURE RING NECK PHEASANTS by A.J. King, North Scituate, RI. The pair display extremely fine and detailed painted feather work with exceptionally well-carved relief wings and elongated split tails. Both have a fine patina and are mounted on a painted driftwood custom base. Hen in a nesting position. The base is signed and dated 1951. 3000-4000





163 RARE MINIATURE EMPORER GOOSE by C.B. deGavre, Brig. Gen. USAF (Ret.), Onacock, VA. Excellent original paint and structurally excellent condition. Deep relief-carved wings and carved layered feather wing tips. Split-tail carving. Mounted atop a driftwood base. Notation on bottom reads: *Emporer Goose*. Signed and dated 1949. 300-500

164 WHITE-FRONTED MINIATURE GOOSE by C.B. deGavre, Brig. Gen. USAF (Ret.), Onacock, VA. Excellent original paint and structurally fine condition. Relief-carved wings and split tail. Head turned sharply right. Some loss to filler at base of neck. Mounted atop driftwood base. Notation on base: *White-Fronted Goose*. Signed and dated 1948. 300-400

165 RARE AND EXCEPTIONAL PAIR OF MINIATURE MALLARDS by Brig. General C.B. deGavre, Ret., Onacock, VA. Both in near-mint original paint and structurally excellent condition. Raised, relief-carved wings and raised wing tips. The hen with her bill open in a calling mode. Both with realistic legs. Mounted atop a driftwood base. Signed and dated 1947. 600-900

166 FINE AND RARE PAIR OF MINIATURE WIDGEON by C.B. deGavre, Brig. Gen. USAF (Ret.), Onacock, VA. Near-mint original paint and condition. Both with raised wing tips. The drake is a preener. Both mounted on a simulated mud flat. Signed on bottom with notation *Widgeon on the Mud*. Signed and dated 1947. 600-900



North American Decoys 1970 Winter Issue





167 MINIATURE GOLDENEYE DRAKE by A.E. Crowell, East Harwich, MA. Mint original paint and condition. Snug-head model with split tail. Fine paint detail to back. Retains rectangular stamp with pencil notation *Goldeneye* and 18. 1500-2000

168 OUTSTANDING BLUE WING TEAL DRAKE by A.E. Crowell, East Harwich, MA. Mint original paint and condition. Split-tail model. Mounted on a painted base. Retains rectangular stamp with 15 on bottom. 1500-2000

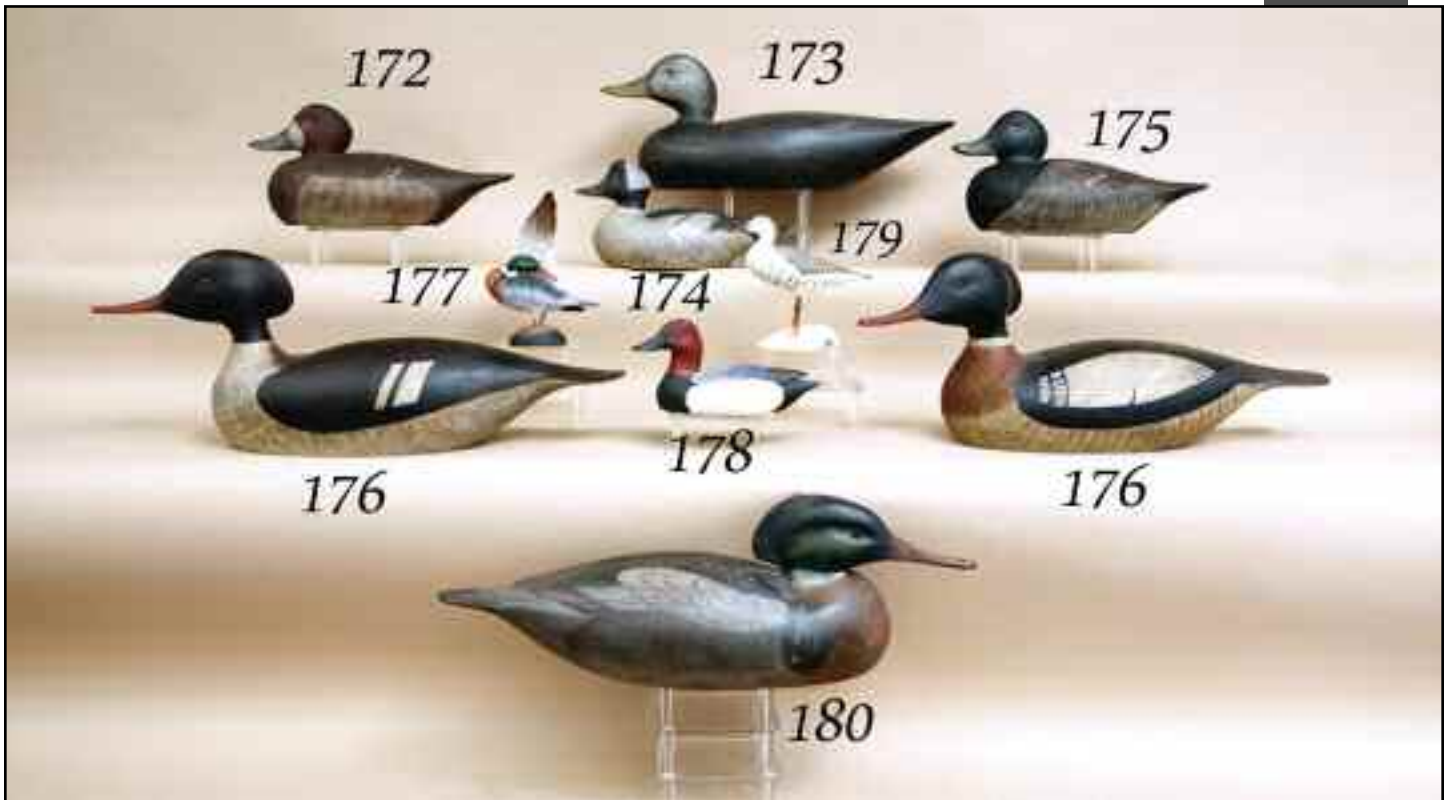
169 VERY FINE MINIATURE BLUE WING TEAL HEN by A.E. Crowell, East Harwich, MA. Mint original paint and condition. Split-tail model mounted atop a painted base. Retains rectangular stamp on bottom. 1500-2000



170 PAIR OF ONE-THIRD SIZE MALLARDS by John Wood, Trenton, NJ. Mint original paint and condition. Fine feather detail with crossed raised wings. The hen is a preener. Both signed. 300-500

171 PAIR OF ONE-THIRD SIZE PINTAILS by John Wood, Trenton, NJ. Mint original paint and condition. Both with excellent paint detail and raised wings. Both heads turned slightly left. 300-500





172 BLUEBILL HEN by Roger Mitchell, Kingston, MA. Excellent original paint and unused condition. Finely executed in the Crowell tradition with raised relief-crossed wing tips and fluted tails. Rasp-finished head crest and breast. Headturned slightly left. Maker's oval stamp on bottom. Exceptional in all respects. 200-300

173 FINE BLACK DUCK by Roger Mitchell, Kingston, MA. Excellent original paint and condition. Carved in the manner of Elmer Crowell. Fine feather detail. Carved fluted tail. Rasped head crest and breast. 200-300

174 FINE BUFFLEHEAD DRAKE by Roger Mitchell, Kingston, MA. Excellent original paint and structural condition. Executed in the manner of A.E. Crowell. Relief-carved tail feathers. Exhibits a fine patina. Maker's oval stamp on bottom 100-200

175 BLUEBILL DRAKE by Roger Mitchell, Kingston, MA. Excellent original paint and unused condition. Finely executed in the Crowell tradition with raised relief-crossed wing tips and fluted tails. Rasp-finished head crest and breast. Head turned slightly left. Maker's oval stamp on bottom. Exceptional in all respects. 200-300

176 FINE PAIR OF MERGANSERS by Roger Mitchell, Kingston, MA. Mint original paint and condition. Executed in the manner of George Boyd. Both with heads slightly turned left. Both with fine patina. Both with maker's stamp and signed. 300-500

177 VERY FINE MINIATURE RED-BREAST MERGANSER DRAKE by Roger Mitchell, Kingston, MA. Mint original paint and condition. Outstretched raised carved wing in a preening position. Mounted atop a carved rock base. Bears maker's oval stamp. 100-200

178 ONE-THIRD SIZE CANVASBACK DRAKE by Roger Mitchell, Kingston, MA. Mint original paint and condition. Fine detailed raised feather work. Raised wing tips and fluted tail. Signed on bottom. Carved signature on bottom. 100-200

179 SANDPIPER by Roger Mitchell, Kingston, MA. Mint original paint and condition. Relief-carved wings and raised wing tips. Mounted atop a carved shell base that bears the oval maker's stamp. 100-200

180 FINE RED-BREAST MERGANSER DRAKE by Roger Mitchell, Kingston, MA. Excellent original paint and structurally fine condition. Relief-carved raised wings with fluted tail. Flowing carved crest. Carved in a tranquil posture. Fine paint detail overall. Retains maker's oval stamp. 200-300



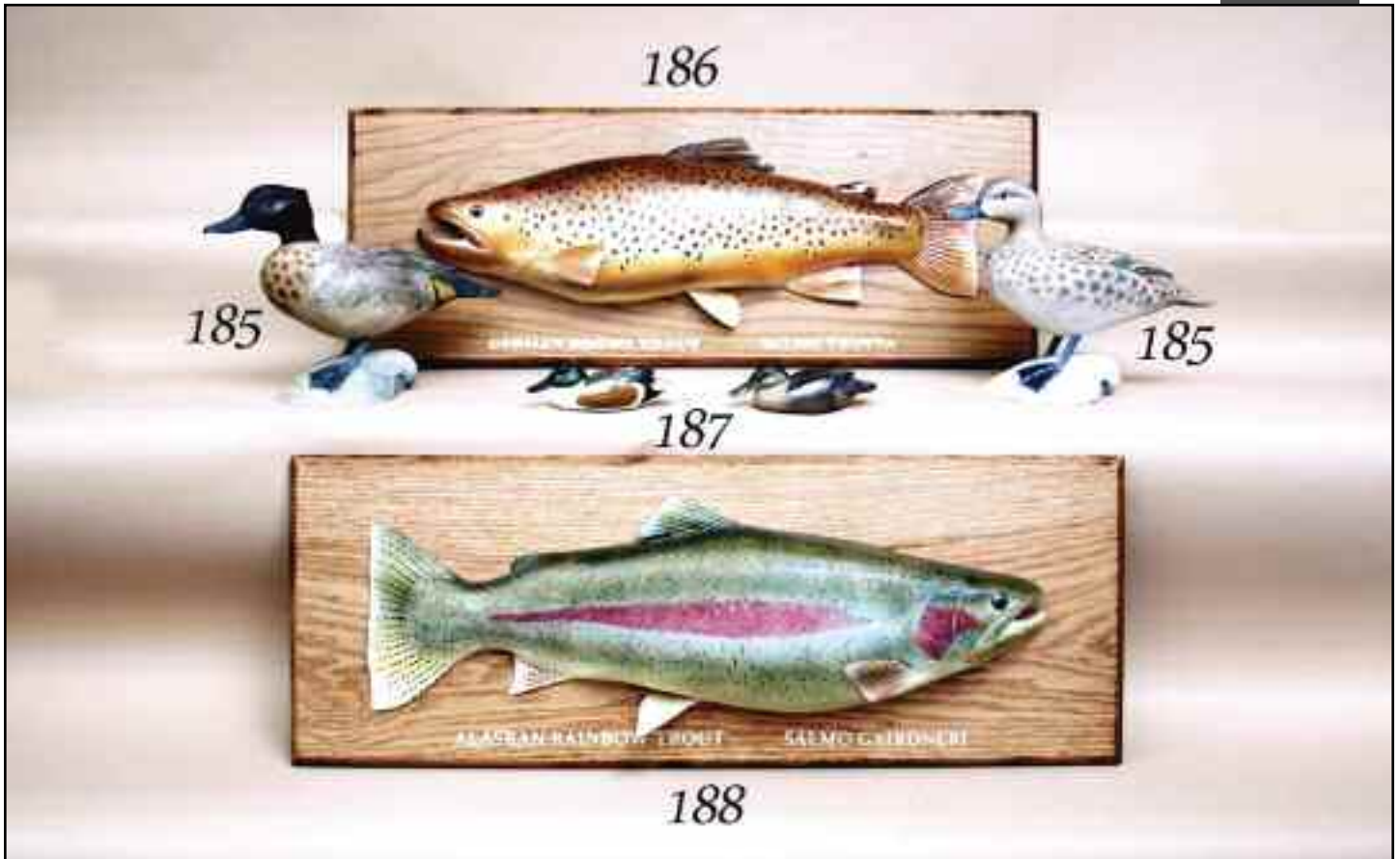
181 ONE-THIRD SIZE MALLARD DRAKE by Frank Adams, West Tisbury, MA. Excellent original paint and condition. Inlet bottom weight. Paint worn to a fine patina. 200-300

182 ONE-QUARTER SIZE MALLARD, possibly Mid-west, in original paint which exhibits crazing overall. Deep ice groove. Mounted atop metal feet. Structurally sound condition. 100-150



183 RARE LESSER YELLOWLEG by Lloyd Johnson, Bay Head, NJ. Excellent original paint and fine structural condition. Both wings partially raised with crossed carved tips. Flared, fluted tail. Carved in a preening position. Realistic formed legs atop a driftwood base. Signed and dated 1964. A few small paint chips at right lower wing. An almost identical example was sold at Christie's in the Russell Aitken collection, January 18, 2003, Lot 1013. 6000-7000

184 GREATER YELLOWLEG by William Gibian, Onancock, VA. Mint original paint with exceptional detailed carving exhibiting musculature on turned neck. Deep relief raised wings with detailed feather carving. Carved signature by artist on bottom. 600-900



185 VERY FINE PAIR OF FULL-SIZE STANDING GREEN WING TEAL by Roger Mitchell, Kingston, MA. Mint original paint and structurally excellent condition. Both with relief-carved raised wings with carved tips. Both with the heads turned slightly left. Both mounted atop large carved clam shells. Both retain maker's oval stamp. Hen also signed in pencil. 400-600

186 EXTREMELY FINE CARVED EFFIGY OF A GERMAN BROWN TROUT by World Champion carver Vickie Nitkiewicz. Mint original paint and structural condition. Carved from basswood and mounted on a wood plaque. Exceptional detailed paint with life-like characteristics. Signed and dated "04." Overall length of carving is approximately 24 inches. 400-600

187 PAIR OF MINIATURE SHOVELLERS by Ronald Sabatini, Levittown, PA. Near-mint original paint. Both with snug heads, raised wing tips and fluted. Signed and dated '09. 100-200

188 FINE CARVING OF AN ALASKAN RAINBOW TROUT by World Champion carver Vickie Nitkiewicz. Exceptionally detailed paint and surface. Mint condition. Mounted on a rectangular wood plaque. Signed and dated "04" on back. Overall length is approximately 24 inches. 400-600

Provenance: This carving won the Special Fish Carving Competition – Hanging Division at the 2003 World Championship Carving Competition.



189 EXCEPTIONAL PAIR OF HOODED MERGANSERS by Hurley Conklin, Manahawkin, NJ. Near-mint original paint and structurally excellent condition. Both with turned double-crested heads. Both with elongated carved wings. Hollow carved with inlet bottom weights. Both with crisp *H. CONKLIN* brands. 800-1200

190 VERY FINE GREATER YELLOWLEG by Hurley Conklin, Manahawkin, NJ. Near-mint original paint and structurally excellent condition. Carved in a running position. Split tail carving. Branded *H.C* on bottom. 300-400

191 RARE PAIR OF WIDGEON by Hurley Conklin, Manahawkin, NJ. Both in near-mint original paint and structurally sound condition. Hollow construction. Both with heads slightly turned. Both with ice grooves and elongated carved wing tips. Both with inlet bottom weights and crisp *H.CONKLIN* brands. 800-1200

192 RARE PAIR OF PINTAILS by Hurley Conklin, Manahawkin, NJ. Near-mint original paint and structurally excellent condition. Both hollow-carved with carved ice groove and relief-carved wing tips. Hen is a sleeper. Both with inlet bottom weights and crisp *H.CONKLIN* brands. Exceptional Conklin pair. 800-1200

193 EARLY YELLOWLEG by Hurley Conklin, Manahawkin, NJ. Near-mint original paint and excellent structural condition. Split-tail carving. Mounted on its original base. Signed by maker. 250-350

194 FINE EARLY PAIR OF RED-BREAST MERGANSERS by Hurley Conklin, Manahawkin, NJ. Excellent original near-mint paint. Finely detailed carved crests. Both heads slightly turned. Both with carved tail feathers. Both hollow carved with inlet bottom weights. Both structurally very good. Drake with fine hairline check to neck. Both with crisp *H. CONKLIN* brands. 800-1200

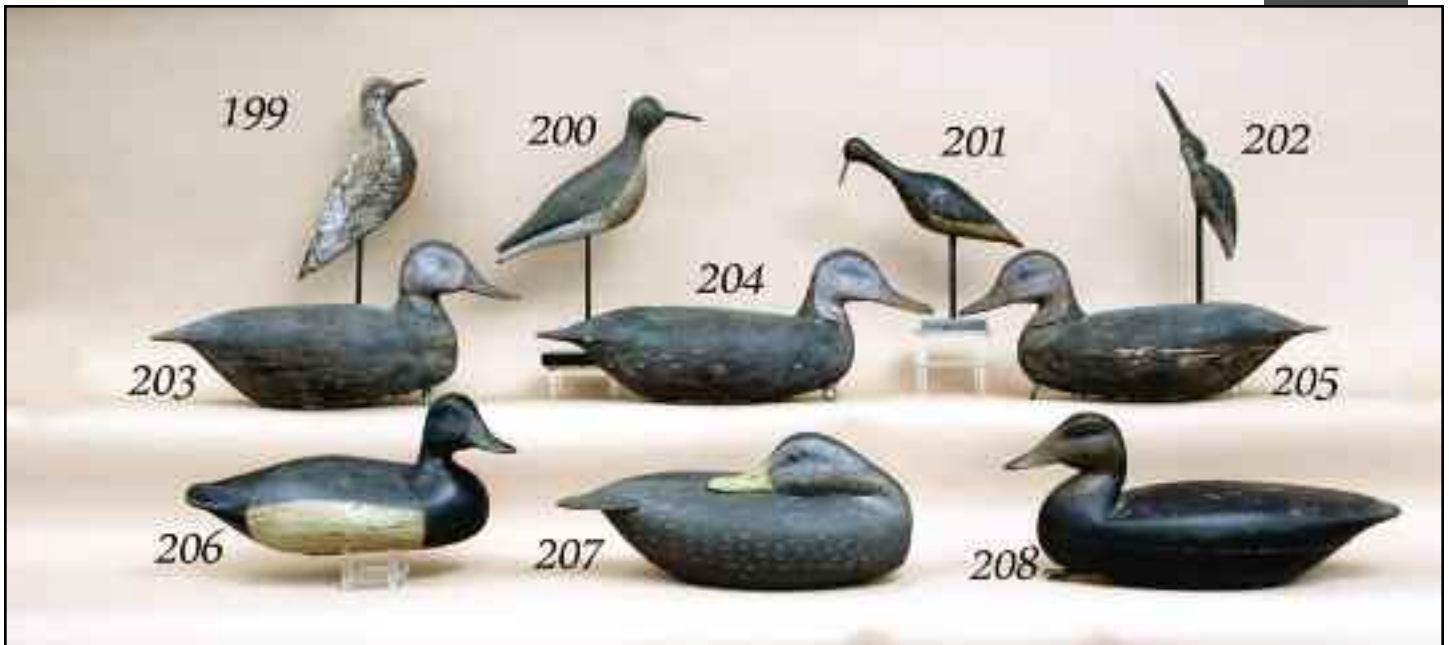
195 FINE PAIR OF AMERICAN MERGANSERS by Hurley Conklin, Manahawkin, NJ. Exceptional original paint and structurally sound condition. Hollow carved with ice grooves. Both in a swimming position. Both have inlet bottom weights. Both retain crisp *H. CONKLIN* brands. An early outstanding pair of Conklin decoys. 800-1200

196 GROUP OF SHOREBIRDS consisting of a **YELLOWLEG** by Hurley Conklin, Manahawkin, NJ. Original paint, crazed, and good structural condition. Signed. Together with a **TINNY SHOREBIRD** in poor condition covered with a coat of epoxy, and a group of **FLATTIES** in original antiqued paint. All five attached by a gunner's carrying cord. Also a **YELLOWLEG** by Art Birdsall, Pt. Pleasant, NJ, in very good original paint and condition. 200-300

197 FINE RED-BREAST MERGANSER DRAKE by Hurley Conklin, Manahawkin, NJ. His best grade with near-mint original paint. Hollow carved with deep ice groove and carved wing tips. Five graduated crest feathers. Head turned slightly left. Branded *H. CONKLIN*. 300-500

198 RACEY MERGANSER HEN by Hurley Conklin, Manahawkin, NJ. Excellent original paint and condition. Hollow carved with incised wing tips and eight comb feathers. Very crisp early brand. Inlet bottom weight. 300-400





199 EARLY BLACK-BREAST PLOVER, probably New Jersey, in very weathered paint and condition. Similar in style to the Brigantine decoys attributed to the Harris family. Scarred by shot. 300-400

200 EARLY SHOREBIRD, probably New Jersey. Mostly original paint with white area possibly strengthened. Crack on neck under bill. Bill probably replaced. 100-200

201 LESSER YELLOWLEG by Bernie Penn, Forked River, NJ. Very good original paint worn to the wood in areas. Structurally excellent with deep relief-carved wings. Elongated neck in a feeding position. Bill may be an early replacement. Fine delicate early New Jersey shorebird. 800-1200

202 EARLY SHOREBIRD in a running position, probably New England. Weathered original paint and structurally good condition. Incised wing detail. Retains original bill. Chip missing from underside at rear of placement hole. For an almost identical example see *Art of the Decoy* by A. Earnest. 200-300

203 BLACK DUCK by Hurley Conklin, Manahawkin, NJ. Good original paint and structurally good condition, showing some in-use wear. Mid-neck repaired crack. Retains bottom pad weight. Hollow carved. Pre-brand. 200-300

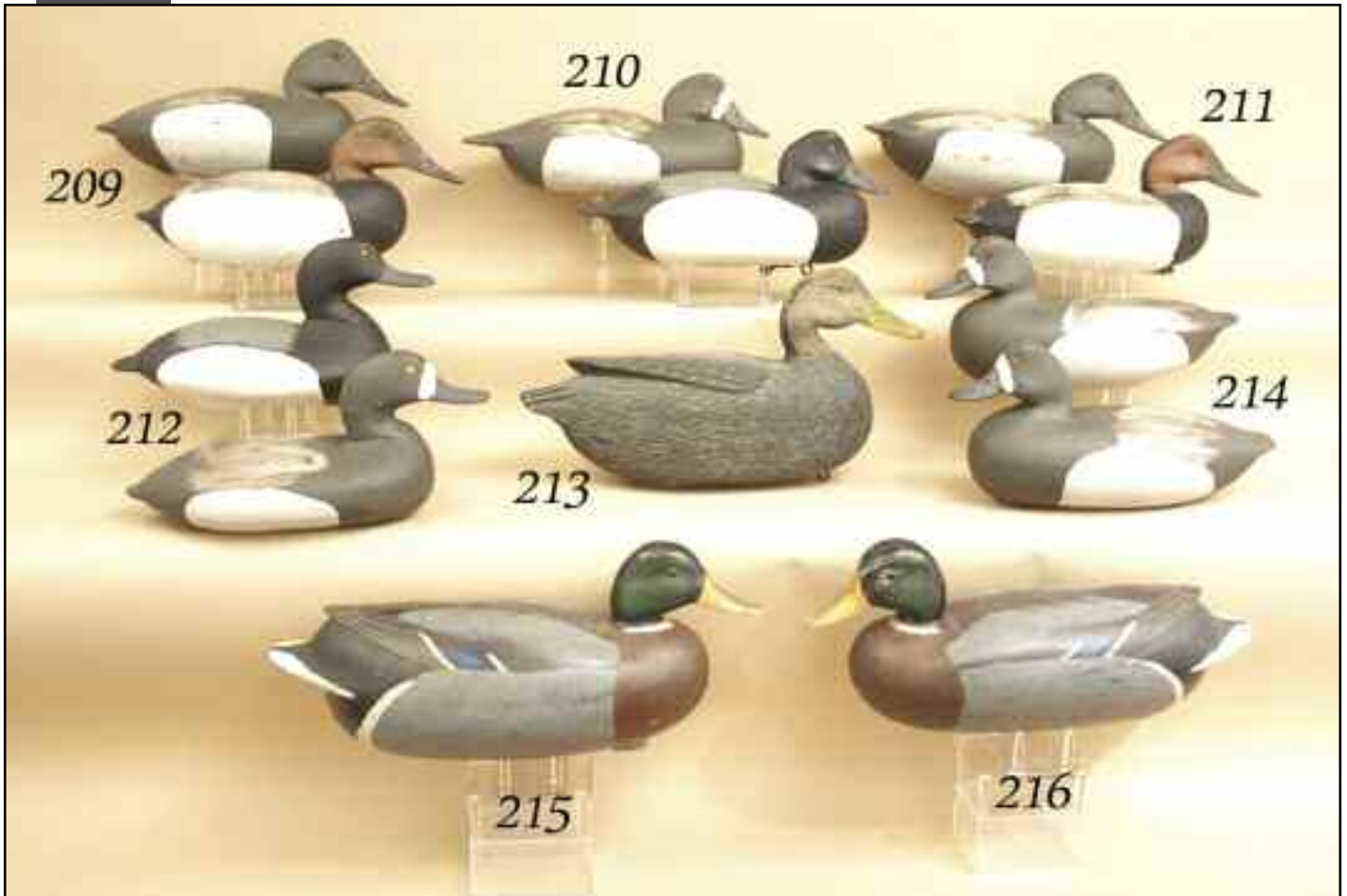
204 BLACK DUCK by Hurley Conklin, Manahawkin, NJ. Very good original paint with some minor wear. Hollow shooting model. Pre-brand. Retains bottom pad weight. 200-300

205 BLACK DUCK by Hurley Conklin, Manahawkin, NJ. Good original paint and structurally good condition. Rubs to edges and crack in neck base. Retains bottom pad weight. Pre-brand gunning model. 200-300

206 RARE BROADBILL DRAKE by Ezra Hankins, Lovelandtown, NJ, 1847-1936. Very good weathered paint that appears to be original. Structurally very good condition. Some tight checks. Carved with head turned right and upward. Retains bottom pad weight stamped with maker's name three times. A rare example of this maker's work. 2000-3000

207 EARLY RARE BLACK DUCK PREENER by Hurley Conklin, Manahawkin, NJ. Excellent original paint and unused condition. Body retains painted feather work. Head is ticked with feathering. Hollow carved. Rare preening position with turned tail. Pre-brand. 500-700

208 BLACK DUCK by Capt. Jesse Birdsall, Barnegat, NJ, circa 1900. Very good original paint with some minor flaking to the back and right side. Very strong paint on the speculums. Good scratch feather paint. Structurally excellent with a repair to hairline crack at mid-bill by Russ Allen. Hollow carved with doveled two-piece construction. Retains bottom pad weight and signature copper-clad leather rigging. For information see *New Jersey Decoys* by H. Fleckenstein, pg. 9, and Plates 39 and 40. This historic decoy was part of the Sedge Island Gun Club rig used on the Barnegat Bay, New Jersey. 800-1200



209 PAIR OF EARLY CANVASBACKS attributed to Jess Heisler, Burlington, NJ. Very old working paint. Both in structurally sound condition. Both have incised carved feather detail and fluted tails. Both retain bottom weights and rigging. Hollow. Made after the John English pattern. 400-600

210 VERY EARLY PAIR OF BLUEBILLS, Delaware River, in very early working paint. Both snug head models. Hollow carved with deep fluted tails and fine bill carving. Both retain bottom weights and rigging. 300-500

211 PAIR OF EARLY CANVASBACKS attributed to Jess Heisler, Burlington, NJ. Very old working paint. Both in structurally sound condition. Both have incised carved feather detail and fluted tails. Both retain bottom weights and rigging. Hollow. Made after the John English pattern. 400-600

212 PAIR OF BLUEBILLS, Blair school, in very old working paint and structurally sound condition. Both retain bottom weights. Both hollow carved. The hen branded *BIDDEL* on bottom. 300-500

213 EARLY BLACK DUCK by Caleb R. Marter, Sr., Burlington, NJ. Very old working paint by Marter. Structurally good condition. High head, raised carved wings and cupped fluted tail. Bottom weight and owner's tag in place. 100-200

214 TWO BLUEBILL HENS, Delaware River. Very early gunning paint. Both hollow carved with deep fluted tails. Both bottom pad weights and rigging. 300-500

215 RARE EARLY MALLARD DRAKE by Richard Anderson, Tullytown, PA. Retains very good paint by Robert "Turk" Libensperger. Excellent structural condition with raised relief-carved wing tips. Bottom weight removed. Retains maker's copper tag. 400-600

216 RARE EARLY MALLARD DRAKE by Richard Anderson, Tullytown, PA. Retains very good paint by Robert "Turk" Libensperger. Excellent structural condition with raised relief-carved wing tips. Bottom weight removed. Retains maker's copper tag. 400-600





217 PAIR OF BLUE WING TEAL by Ronald Sabatini, Levittown, PA. Both in original paint and unused condition. Fine detailed wing carving with split tips and carved tails. Bottom weights. Both signed. 200-300

218 PAIR OF CINNAMON TEAL by Ben Heinemann. Mint original paint and condition. Both painted with detailed feather work overall. Both with raised carved wing feathers. The drake is a preener. Both hollow carved. Both retain bottom weights with maker's name embossed. Both signed by maker. 800-1200

219 PAIR OF SHOVELLERS by Ronald Sabatini, Levittown, PA. Near-mint original paint and unused condition. Both with dramatic turned heads. Carved split wing tips and fluted tails. Both signed and dated '04. 200-300

220 PAIR OF GUNNING DOVES by Ronald Sabatini, Levittown, PA. Excellent original paint and condition. Deeply carved wings and tails. Signed and dated 1979. 100-200

221 PAIR OF GREEN WING TEAL by Phil Babe in mint original paint and unused condition. Excellent layered wing feather carving with raised tips and relief-carved sides. Both with heads slightly turned. Both with full bottom keels and maker's brand. 300-400

222 PAIR OF CANVASBACKS by Ronald Sabatini, Levittown, PA. Excellent original paint and unused condition. Hollow carved. Bottom weights. Both signed. 200-300

223 PAIR OF RING NECKS by Ronald Sabatini, Levittown, PA. Near-mint original paint and unused condition. Raised split wings with drop tails. Both hollow carved. Pad weights. Both signed and dated '06. 200-300



224 PAIR OF ONE-THIRD SIZE RED HEADS by George Strunk, Glendora, NJ. Outstanding original mint paint and condition. Both with raised carved wings and fluted tails. Both with heads turned slightly left. Both with bottom pad weights stamped *STRUNK*. Hollow construction. 300-400

225 PAIR OF ONE-THIRD SIZE WIDGEON by George Strunk, Glendora, NJ. Mint original paint and condition. Both with carved wing tips and fluted tails. Both hollow carved with heads turned slightly left. Both with bottom pad weights stamped *STRUNK*. Signed by maker. 300-400

226 RARE PAIR OF ONE-THIRD SIZE RUDDY DUCKS by George Strunk, Glendora, NJ. Mint original paint and condition. Carved with slightly raised wings and fluted tails. Both heads turned slightly left. Hollow carved. Pad weights stamped *STRUNK*. Both signed by maker. 300-400

227 OUTSTANDING TRUE PAIR OF BLACK DUCKS by George Strunk, Glendora, NJ. Mint original paint and unused condition. Both with fine feather detail. Both with carved crossed raised wing tips and broad fluted tails. Both hollow carved with heads turned slightly left. Both with bottom weights stamped *STRUNK*. Both signed by maker. 1000-1400

228 ONE-THIRD SIZE BLACK DUCK PREENER by George Strunk, Glendora, NJ. Mint original paint and condition. Raised carved wing tips and broad fluted tail. Hollow carved with bottom pad weight stamped *STRUNK*. 200-300





229 HUMMING BIRD GATHERING NECTAR in mint original paint and condition. Bill affixed to a cactus flower atop a custom. *ORIGINALS* etched in bottom. 75-125

230 BLUE BIRD by Rosalyn Leach Daisey in mint original paint and condition. Perched atop a branch that is mounted on a custom. Signed and dated 1995. 100-2000

231 WHIMSICAL PAIR OF MINIATURE OTTERS in a snuggling, complacent pose, in mint original paint and condition. Mounted atop a custom base. Carved and signed by Rosalyn Leach Daisey. Dated 1993. 200-300

232 PAIR OF SLATE COLORED JUNCOS by E.F. Muehlmann. Excellent original paint. Tail repair to one. Mounted atop a branch. Signed and dated 1/69. 50-75

233 BABY SHRIKE by Al Riehl. Mint original paint and condition. Fine carving and feather work. Mounted on a driftwood base. Signed and dated 3/89. Together with a **BLUE/GRAY GNAT CATCHER** by Al Riehl. Mint original paint and condition. Alert pose. Mounted atop a branch. Signed and dated 7/93. 100-150

234 GROUP OF FOUR SONG BIRDS. All in excellent original paint and condition. Group consists of a SANDPIPER, a GOLDEN KINGLET, a BLACK CAPPED CHICKADEE and a THRUSH. All mounted atop natural wood bases. 100-150

235 YELLOW THROAT WARBLER by William Cowan in mint original paint and condition. Excellent feather detail. Mounted atop a burlwood base. Signed and dated 7/92. Together with a **HOUSE WREN** by Pete Miccichi in excellent original paint and condition. Raised, carved feather detail. 100-125

236 LEAST SANDPIPER by R.E. Schepis. Near-mint original paint and condition. Carved in a sleeping, raised-leg position with split tail feathers. Mounted atop a custom driftwood base. Signed on bottom. 75-125

237 HOUSE WREN by R.E. Schepis. Near-mint original paint and condition. Carved with raised crossed wing tips. Mounted atop a burlwood base. Signed on bottom. 75-125

238 GROUP OF THREE SHOREBIRDS consisting of a PLOVER and two SANDPIPERS. All in excellent original paint and condition. Mounted atop wood bases. 75-125



239 EARLY BLACK DUCK by John W. McLoughlin, Bordentown, NJ. Gunning competition model in near-mint original paint and unused condition. Hollow carved with deep relief wing separation and layered crossed wings. Signed and dated 1956 on bottom. 2000-2500

240 AMERICAN BRANT by John W. McLoughlin, Bordentown, NJ. Competition gunning model in near-mint original paint and structurally fine condition. Deep relief-carved wings with carved feather detail at tips. Extended leather wing tips. Head is turned boldly left with fine bill carving. Hollow construction. Competition keel removed. Early McLoughlin decoy. 1500-1800

241 PINTAIL HEN PREENER by John W. McLoughlin, Bordentown, NJ. Early competition model in mint original paint and condition. Elaborate feather work with relief-carved, raised and crossed wings. Layered feather design together with carved tail. Competition keel removed. Signed by the maker twice on bottom. 2000-2500





242 BLUEBILL HEN by Charles Black, Bordentown, NJ. Excellent original paint and structurally sound condition. Hollow carved, bottom weight removed. See *New Jersey Decoys* by H. Fleckenstein for a similar example. 400-500

243 NICE EARLY CANVASBACK DRAKE attributed to John McLoughlin, Bordentown, NJ. Very good original paint showing some in-use wear. Structurally excellent condition. Relief-carved layered wing tips. Bottom weight removed. Hollow carved. A fine Delaware River decoy. 600-800

244 BLUEBILL DRAKE by Lawrence McLoughlin, Edgely, PA. Excellent original paint and condition. Hollow carved. Retains weight and rigging. Owner's tag removed. 900-1200

245 VERY EARLY BLUE BILL HEN by Caleb R. Marter, Sr., Burlington, NJ. Very old working paint by Marter, some of which may be original. Hollow carved with raised wings and fluted tail. Bottom pad weight and owner's tag removed. 100-200

246 VERY EARLY BLUEBILL DRAKE by Caleb R. Marter, Sr., Burlington, NJ. Old working paint by Marter. Snug-head model with raised carved wings and fluted carved tail. Hollow carved with bottom pad weight and owner's brass tag. Some paint loss. 100-200

247 EARLY BLUEBILL DRAKE by Caleb R. Marter, Sr., Burlington, NJ. Very early working paint by Marter. Hollow carved with raised wing and fluted tail carving. Bottom pad weight in place. 100-200

248 VERY EARLY BLUEBILL HEN by Caleb R. Marter, Sr., Burlington, NJ. Very old working paint by Marter, some of which may be original. Hollow carved with raised carved wings and fluted tail. Bottom weight and rigging in place. 100-200



249 AN EXCEPTIONAL HIGH-HEAD SWAN by Bob White, Tullytown, PA. Mellow original paint and structurally sound condition. Hollow carved with raised wing tips and broad fluted tail. Retains large bottom pad weight and rigging. Signed and dated 1985. 10000-12000



Bob White - Tullytown, Pa.
rare hollow carved
signed/dated 1985



250 COOPER'S HAWK by Gordon M. Dunfee, Toms River, NJ. Mint original paint and condition. Elaborately carved and layered semi-spread wing position. Aggressive stance. Mounted atop a tree branch on a custom base. Signed by maker. 400-600

251 FINE COOPER'S HAWK by R.E. Schepis. Mint original paint and condition. Elaborate carved feather detail and carved spread tail. Raised layered wing tips and fine muscle detail to breast. One leg raised and tucked. Mounted on a custom base. Signed. 300-400



252 IMPRESSIVE FULL-SIZE RED-TAIL HAWK by Al Riehl. Mint original paint and condition. Carved with elaborate wing, tail and tufted thigh detail. Feet with talons grasping a tree stump surrounded by leaves and greenery. Signed and dated 1/07 on bottom. 500-700



253 EARLY CANADA GOOSE, New Jersey, probably Parkertown. Very old working paint and very good structural condition. Hairline crack at mid-neck. Hollow carved. Retains large bottom pad weight. 300-500

254 VERY EARLY CANADA GOOSE, New Jersey, similar in style to an early Shourds model. Very old working paint. Structurally very good. Hollow carved with large bottom pad weight and rigging eye. 300-500

255 CANADA GOOSE attributed to Burrel Adams, NJ. Very old working paint and structurally good condition. Hollow carved with raised relief wings. Old repair at seam on left side. Retains inlet weight in addition to bottom pad weight. Swimming position. 300-400

256 EARLY NEW JERSEY GOOSE in very old working paint and good structural condition. Hollow construction with weights removed. Branded *GHC* on bottom. 200-300





257 RACEY BLACK DUCK by Gerald Roberts, Blue Hills, ME. Good original paint and structurally sound condition. Paint with rubs to edges. Deep relief-carved wings and inlet head carved in a swimming position. Bottom weight removed. 400-600

258 GOLDEN PLOVER, probably New England, in very old working paint, some of which appears to be original. Structurally very good with some shot scarring to the left side. Bill probably an old replacement. Nice plump New England shorebird. 300-400

259 MALLARD DRAKE by A.E Crowell, East Harwich, MA. Very old working paint and structurally sound condition. Retains glass eyes. Bottom weights removed. Rectangular Crowell stamp on bottom. 200-300

260 NICE EARLY REDHEAD DRAKE by Keyes Chadwick, Martha's Vineyard, MA. Old working paint and good structural condition. Classic pose. Some neck filler missing. Bottom weight removed. 500-800

261 EARLY CANADA GOOSE, probably New England, in very good original paint with rubs to edges. Structurally very good with upper neck hairline check. Deep ice groove wing separation. Retains large bottom pad weight. 300-500



262 EARLY BLACK DUCK, possibly Ellis Parker, Beach Haven, NJ, circa 1900. Very good original paint showing minor rubs to tail edge, bill edge and crown of head. Hollow carved, structurally very good. Retains bottom weight stamped *T LOCKHART HAMMONTON NJ*. 300-500

263 EARLY BLACK DUCK by Clark Madara, Pitman, NJ. Flocked working paint. Old repair to mid-neck check. Hollow carved with inlet weights. 100-200

264 EARLY BLUEBILL HEN by Hurley Conklin, Manahawkin, NJ. Excellent original paint and condition. Hollow carved. Bottom pad weight and rigging. Pre-brand model. 200-300

264A WOOD DUCK DRAKE by Gene Hendrickson, Lower Bank, NJ. Near-mint original paint and unused condition. Hollow construction with the head turned slightly, exhibiting a long flowing crest. Inlet weight stamped *JEH*. A fine and rare species for this maker. 300-400

265 VERY EARLY BLACK DUCK attributed to Jake Barrett, Somers Point, NJ. Old working paint, hollow carved. Good structural condition. Together with an **EARLY BLUEBILL HEN**, Barnegat Bay, in fair working paint and condition. 100-200

266 BROADBILL DRAKE by Rube Corliss, Manahawkin, NJ. Good original paint with some flaking under tail. Hollow carved. Inlet weight. Hairline crack in neck. Lightly struck by shot. 100-200

267 EARLY NEW JERSEY BRANT, probably Parkertown, NJ. Very old working paint and very good structural condition. Upper neck repair. Hollow carved with ice groove. Branded *JOHN FURLOW* on bottom, a legendary New Jersey guide. 75-125

268 BROADBILL HEN by Eugene "Dipper" Ortley, Lovelandtown, NJ. Very good original paint. Hollow carved, structurally good condition. Old repair to bill. Crack in upper tail. Bottom weight removed. 100-200

269 EARLY NEW JERSEY BRANT, probably Parkertown, in very old working paint. Structurally very good with some puppy chew to tip of bill. Hollow carved. Branded *JOHN FURLOW* in middle of back. 75-125

270 RED-BREAST MERGANSER DRAKE by Steve Morey, Tuckerton, NJ. Very good original paint showing some in-use wear. Structurally sound with crossed relief-carved wing tips and fluted tails. Hollow carved in a swimming position. Very early confidence decoy. 200-300

271 PAIR OF GREATER YELLOWLEGS by Rob Daly, West Creek, NJ. Both exhibiting original antiqued paint. Structurally sound condition. Both with shoe-button eyes and iron nail bills. Both on custom bases. One with maker's initials. 200-250

272 LESSER SCAUP by Alfred Ponte in mint original paint and structurally excellent condition. Very detailed feather carving with raised crossed wing tips, fluted tail and deep relief sides. Delicate carving detail to head. Signed and dated '82. 100-200

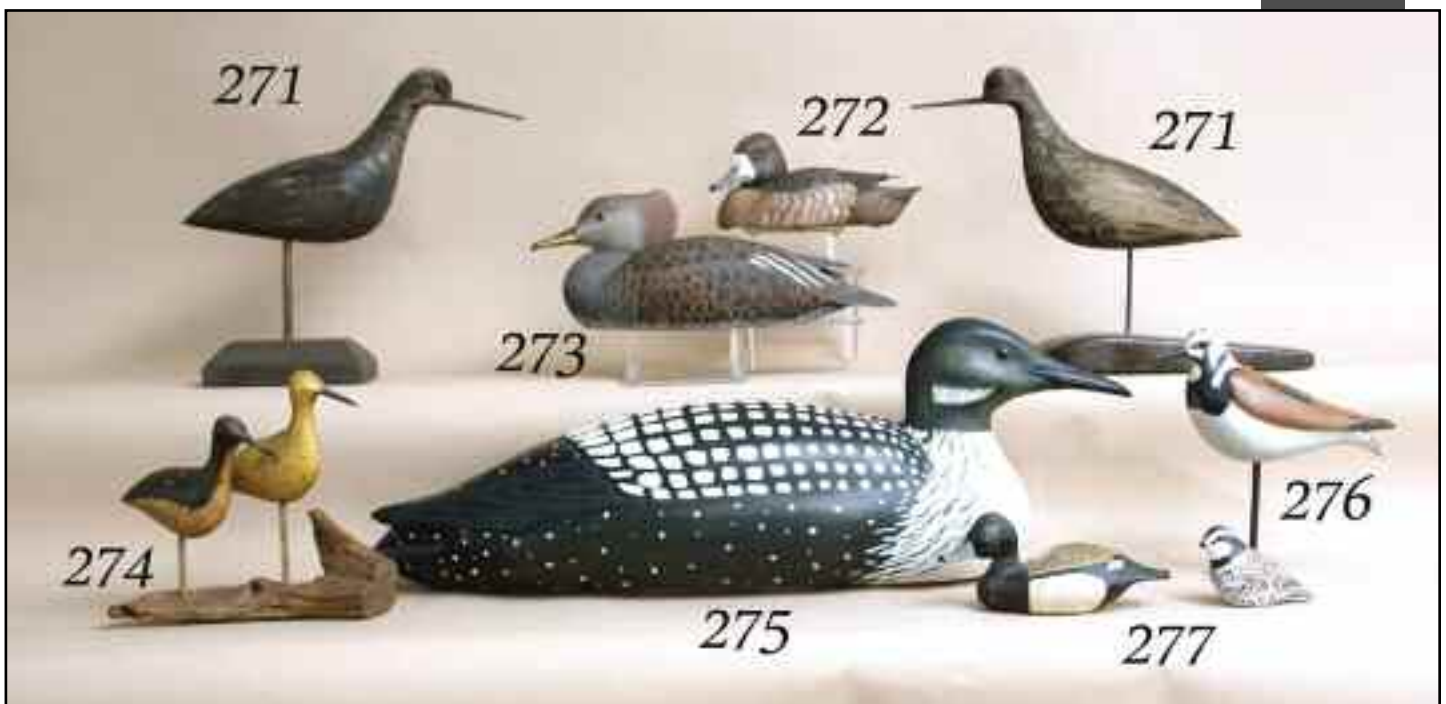
273 HOODED MERGANSER HEN by Russell Van Houzen. Mint original paint and fine structural condition. Highly detailed carved feather work overall. Raised crossed wing tips and broad fluted tail. Head turned slightly left, in a snug position. Signed and dated 1982. 200-300

274 LESSER YELLOWLEG AND SANDERLING by Ken Gosner. Near-mint original paint and condition. Both mounted on a custom driftwood base. Ken Gosner authored and illustrated of *Decoys of the New Jersey Coast and Delaware Bay*. 200-300

275 OUTSTANDING FULL-SIZE LOON by Ronald Sabatini, Levittown, PA. Near-mint original paint and condition. Fine carved wing detail with fine carved tail. Hollow construction. Retains bottom weight. Signed and dated '99. 200-400

276 RUDDY TURNSTONE by Steve Morey, Tuckerton, NJ. Near-mint original paint and condition. Structurally sound with relief-carved wings and split tail. Head turned slightly left. "M" carved in bottom. 150-200

277 MINIATURE BLUEBILL DRAKE attributed to S. Grant. Excellent original paint and condition. Retains bottom pad weight. Signed S. GRANT. Together with a small QUAIL by Steve Morey, Tuckerton, NJ, in original paint and condition. Carved M on bottom. 200-250





278 EARLY NEW JERSEY BRANT, probably Parkertown, in very old working paint. Structurally good with lower neck repair. Hollow carved. Branded *JOHN FURLOW* in center of back. 75-125

279 BRANT, New Jersey, possibly Jay Parker. Old working paint with some paint loss to neck. Hollow construction. Bottom weight removed. Separation at seam. 100-200

280 EARLY BRANT, New Jersey, in very old working paint. Structurally good condition. Section of wood missing from lower neck. Hollow carved with ice groove. Branded *JOHN FURLOW* on bottom. 75-125

281 BRANT by Ellis Parker, Beach Haven, NJ, circa 1920. Very old working paint and structurally very good condition. Old repair at mid-neck. Hollow carved. Retains bottom weight. 200-300

282 EARLY BROADBILL DRAKE by Joe King, Manahawkin, NJ. Very old working paint and structurally good condition. Hollow carved with deep ice groove. Head on a nice high shelf with old check at mid-neck. Hollow with inlet bottom weight and rigging. 300-400

283 BLACK DUCK, possibly by Ken Harris, Woodville, NY. Very early model with scratch-feather paint showing some wear to areas. Unweighted. 50-100

284 HIGH HEAD BRANT, possibly New York state. Appears to be in original paint and fair structural condition. Bottom weights removed. Together with a *BLUEBILL HEN*, possibly New York state, in structurally good condition. Weathered original paint. Old bill repair. 200-300

285 BLACK DUCK, possibly Cape May, NJ. Very old working paint with paint loss to bottom. Structurally fair with losses to tail and bottom. Hollow construction. Bottom weight missing. Together with a *BLACK DUCK*, possibly New England. Very old working paint. Weights removed. 200-300



286 MALLARD DRAKE by the Wildfowler Decoy Company, Old Saybrook, CT. Excellent original paint and structurally sound condition. Tiny chip at tail. Hollow with bottom board and full keel. 200-300

287 RED-BACK SANDERLING by a member of the Verity family, Long Island, NY. Excellent original paint showing some in-use wear. Rub to right cheek. Structurally very good with a working repair to left side. Bill appears to be a very old replacement. Rare and early Verity decoy. 2500-3000

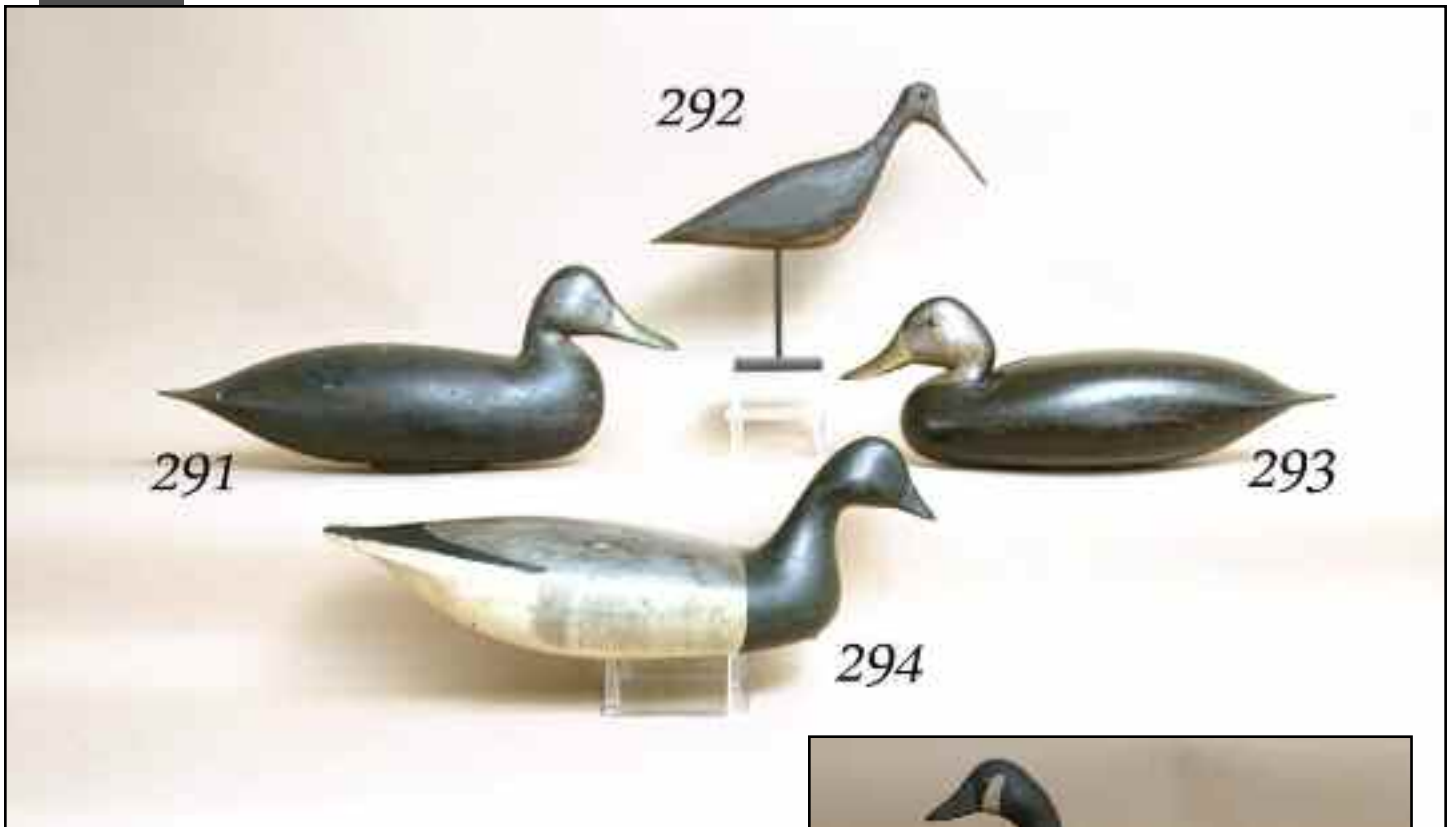
288 VERY EARLY BLUEBILL DRAKE by a member of the Verity family, Long Island, NY. Very weathered original paint. Good structural condition, cork construction with small piece missing from breast seam. Retains weight and leather rigging. 75-125

289 VERY FINE BLACK DUCK by Bill Joeckel, Islip, NY. Near-mint original paint and excellent structural condition. Exhibits finely carved wing detail and fluted broad tail carving. Head is turned slightly left. Head has exceptional detailed carving and very fine paint ticking. Hollow carved. Very fine seam line to left side. Branded and signed by maker. 1500-1800



290 OUTSTANDING SLEEPING SWAN by Bob Kerr, Smiths Falls, Ont. Near-mint original paint and structurally outstanding condition. Hollow carved with its head tucked under a carved raised wing which overlaps the other carved wing. Deep relief carved sides with both leg joints partially exposed beneath. Retains maker's brand. 2000-2500





291 FINE NEW JERSEY BLACK DUCK attributed to Nathan "Rowley" Horner, West Creek, NJ. Very old working paint. Structurally very good condition. Hollow carved. Retains bottom weight. Partial speculums are visible. Undersides of bill chamfered. A fine example of an early New Jersey black duck. 400-800

292 YELLOWLEGS, New Jersey. Possibly original paint and good structural condition. Bill appears to be original. Retains shoe-button eyes. Hairline crack at mid-neck. Similar to the work of Nathan Rowley Horner. Retains Mackey collection stamp. 200-400

293 BLACK DUCK by Nathan "Rowley" Horner, West Creek, NJ, circa 1930. Excellent early working paint by Chris Sprague, Beach Haven, NJ. Structurally sound. Retains bottom pad weight. Hollow construction. Branded CTS on bottom. This decoy is illustrated in *New Jersey Decoys* by H. Fleckenstein, page 53, Plate 66. 6000-8000

294 CLASSIC NEW JERSEY BRANT by Nathan "Rowley" Horner, West Creek, NJ, circa 1900. Very old working paint showing some original paint, with repaint probably by Horner. Some paint loss to back. Structurally sound. Retains bottom weight. For a similar example, see *New Jersey Decoys* by H. Fleckenstein, pg. 95. 1500-1800

294A ONE-QUARTER SIZE CANADA GOOSE attributed to Nathan "Rowley" Horner, West Creek, NJ. Near-mint original paint showing a fine patina. Structurally excellent condition with incised wing tips. Carved bill with tiny glass eyes. Mounted atop carved legs and web feet atop a wood base. 1500-2500





295 BLACK DUCK by Mark Kears, Linwood, NJ. Very old working paint and very good structural condition. Hollow construction. 200-300

296 BLACK DUCK by H.V. Shourds, Tuckerton, NJ. Old working paint and structurally good condition. Old crack at mid-neck. Hollow carved with inlet bottom weight and small chip from tail. Bears the brand of Capt. John Furlow in top back. 500-700

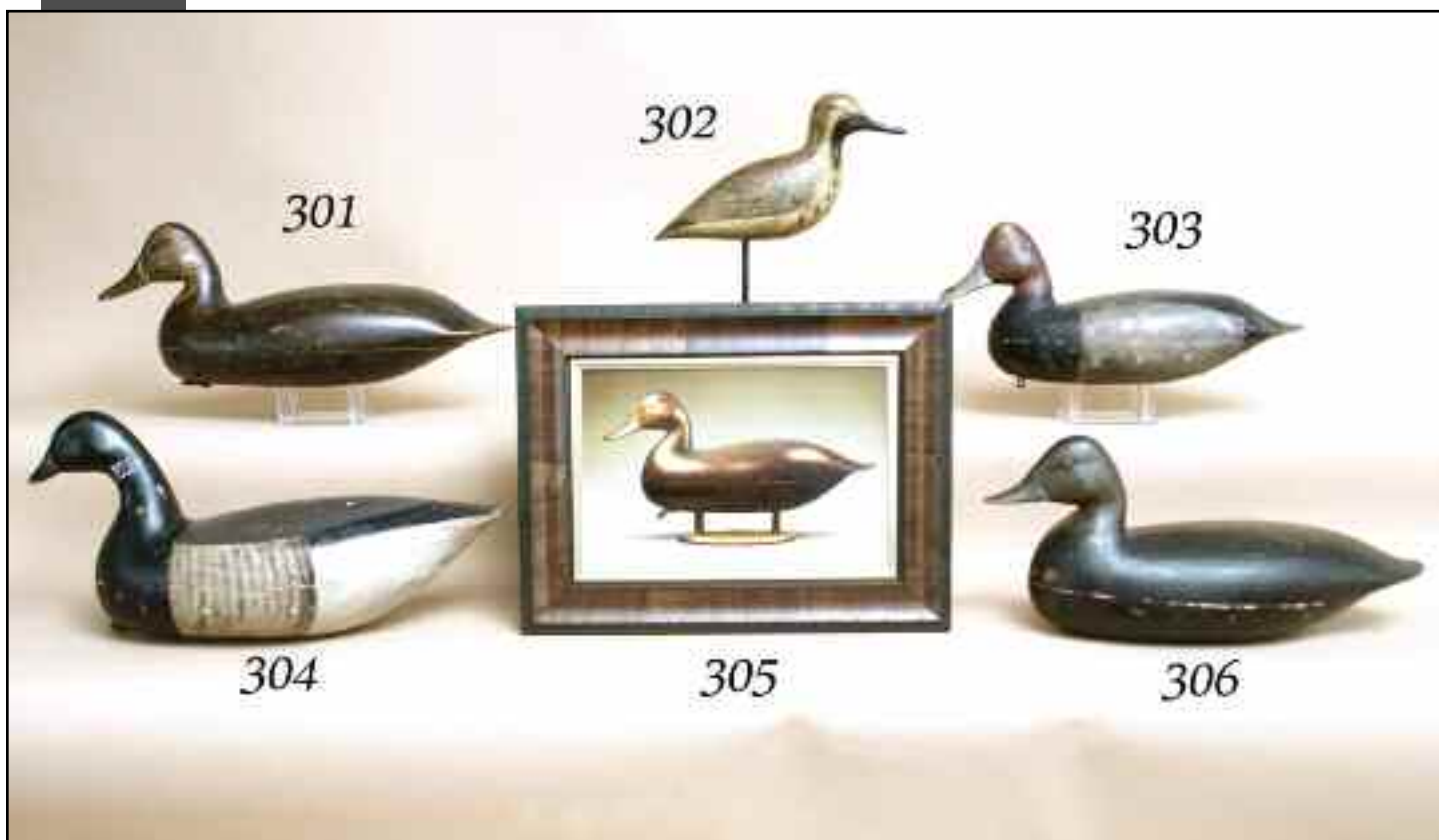
297 EARLY GOLDENEYE HEN by Capt. Jess Birdsall, Barnegat, NJ. Very old working paint, some possibly the original. Very good structural condition. Paint with wear to edges. Hollow carved. Head on a raised shelf. Formerly in the John Hillman collection. Retains John Hillman collection stamp and brand. Retains Hillman signature staple. 500-700

298 BLACK DUCK by H.V. Shourds, Seaville, NJ. Excellent original paint and unused condition. Hollow carved. Scratch feather paint. Inlet bottom weight. Branded. 200-300

299 BRANT by Harry V. Shourds, Seaville, NJ. Excellent original paint and good condition. Snake-head model with old repair at mid-neck. Hollow carved. Retains original inlet weight. Signed on bottom. 200-300

300 EARLY BLACK DUCK by H.V. Shourds, Seaville, NJ. Excellent original scratch-feather paint. Unused condition. Hollow carved with inlet bottom weight. Signed by the maker. Carved circa 1970's. 200-300





301 EARLY BLACK DUCK by H.V. Shourds, Tuckerton, NJ, exhibiting the original scratch-feather paint. Structurally very good. Hollow carved. Inlet bottom weight. See *New Jersey Decoys* by H. Fleckenstein, pg. 55, plate 72. Retains Hillman Collection stamp. Some minor loss to seam filler. 3000-5000

302 RARE EARLY PLOVER by Harry V. Shourds, Tuckerton, NJ, circa 1885. Retains excellent original paint in the rare emerging plumage style. Some minor rubs and shot scarring. Nice plump body. Appears to retain original bill. Very small area of possible touch-up to left underside of tail. Formerly in the Dr. Jack Conover collection and so stamped. 5000-7000

303 RARE AND FINE REDHEAD DRAKE by Harry V. Shourds, Tuckerton, NJ. Very good original paint showing some minor in-use wear and some possible very early touch up to black area on wings. Structurally excellent. Hollow carved with inlet bottom weight. Bears the brand of J.W. Mecray. See *New Jersey Decoys* by H. Fleckenstein, pg. 37, Plates XI and XII. A very fine New Jersey redhead decoy. 8000-12000

304 BRANT by H.V. Shourds, Tuckerton, NJ. Very good original paint and structurally sound condition. Retains very strong side bar stripes. Some minor flaking to rear right. Paint rubs to bill and tail. Possible touch up to white area on underside of tail. Retains inlet bottom weight and rigging. Formerly in the Sommers G. Heady collection and stamped SGH twice on bottom. Additionally, this decoy was exhibited at the Noyes Museum in Oceanville, NJ, August, 1991. See *New Jersey Decoys* by H. Fleckenstein, Color Plate XV for an almost identical example. 6000-9000

305 ACRYLIC ON ARTIST BOARD by Rob Leslie of a classic H.V. Shourds black duck, showing fine scratch feather painting. Image size is approximately 7" x 10 1/2". Set in a complementary custom frame. Excellent condition. 400-600

306 BLACK DUCK by H. V. Shourds, Tuckerton, NJ. Very old working paint, possibly the original. Scratch-feather paint on back. Structurally good with some loss to filler in seams and chip to underside of bill. Retains inlet bottom weight. 700-900

307 TWO VERY EARLY SHOT GUN SHELL BOXES. Both in very good condition. 50-100

308 YELLOWLEG TINNY DECOY, possibly by Strater & Sohler, in excellent original paint. Appears to be in unused condition. Together with a PLOVER TINNY in very good original paint. Structurally very good. Both with original placement sticks. 100-200

309 STANDING RAIL SHOREBIRD in excellent original detailed paint and structurally excellent condition. Raised wing tips and relief-carved sides. Mounted well-formed legs atop a custom driftwood lamp base with shell finial. 300-400

310 MINIATURE OYSTER CATCHER by Joan Siebert in mint original paint and excellent structural condition. Carved raised feathered wings and fluted tail. Delicate painted feathering. Mount on a driftwood base. Signed and dated 1980. 50-75

311 RARE AND FINE ONE-THIRD SIZE CANVASBACK DRAKE by Lloyd Johnson, Bay Head, NJ. Excellent original paint and condition. Relief carved wings, carved wing tips and fluted tail. Head turned slightly left with fine bill carving. Some minor sap bleed to breast area. Signed and dated 1960 by the artist, which was the era of his finest work. 300-500

312 BLACK DUCK by Rhodes Truex, Atlantic City, NJ. Good original flocked paint and very good structural condition. Some minor loss to paint on underside near seam. Retains inlet bottom weight and rigging. See *New Jersey Decoys* by H. Fleckenstein, pg. 60, for a similar example. 700-900

313 FOUR VERY EARLY SHOT GUN SHELL BOXES. All in very good condition. 50-100

314 EARLY BLUEBILL HEN by Gene Hendrickson, Lower Bank, NJ. Very good original paint showing wear overall from use. Structurally excellent. Hollow carved. Retains bottom weight. Noyes Museum exhibition stamp on bottom. 200-300





315 EARLY CANADA GOOSE by Percy Bicknell, Lulu Island, British Columbia, (1897-1959). Appears to be in original paint. Hollow carved with relief wing tips and constructed with bottom board. Retains original weight. Typical crack in upper neck. 300-500

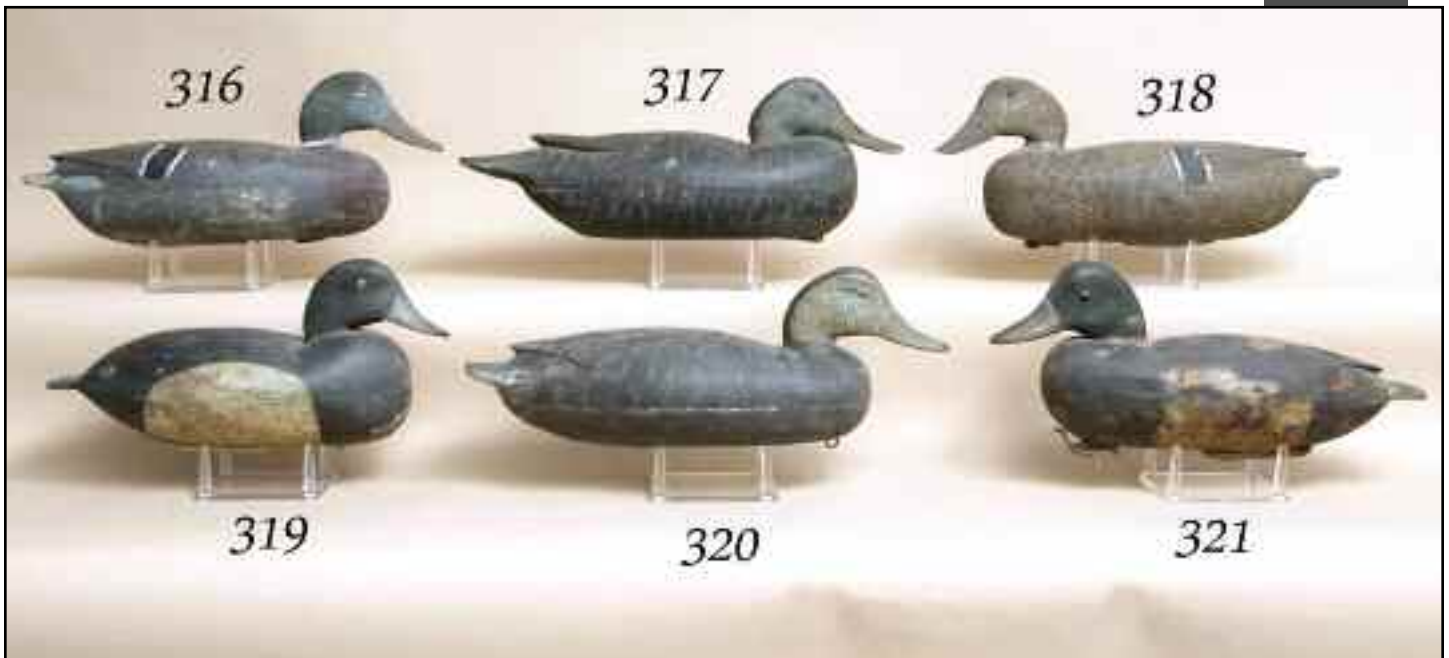
315A GOLDENEYE HEN AND A BLUEBILL HEN, both St. Claire Flats. Both hollow carved with bottom boards. Both in old working paint. 100-200

315B EARLY GOLDENEYE DRAKE, possibly Maine, in old working paint with inlet head and inlet diamond shaped weight. 50-75

315C RED-BREASTED MERGANSER DRAKE, probably New Jersey, in excellent original paint and unused condition. 200-300

315D EARLY MERGANSER, possibly Maritime Provinces, in what appears to be original paint. Solid carved, scarred by shot on left side. Weight removed. 100-200





316 VERY EARLY MALLARD DRAKE by a member of the English family, probably John English, circa 1900. Very early working paint and structurally excellent condition. Hollow carved with raised wing tips and fluted tail. Retains bottom pad weight. Branded R.A. STOCKTON. This decoy comes directly from a Delaware River gunning rig. 1200-1500

317 EARLY BLACK DUCK by Tom Fitzpatrick, Delanco, NJ. Very good original paint and structurally excellent condition. Minor seam separation. Hollow carved, snug head model with raised, carved wing tips and broad fluted tail. Fluted tail carving is highlighted with elongated painted feather strokes. Retains bottom pad weight and rigging thong. Directly from an early Delaware River shooting rig. For an almost identical example, see *Floating Sculpture* by Huster and Knight, page 66. 2500-3500

318 VERLY EARLY MALLARD HEN by John English, Florence, NJ. Very old working paint and structurally very good condition. Bill chip at tip. Hollow carved with raised, carved wing tips and fluted tail. Retains bottom pad weight and rigging. Branded R.A. STOCKTON. Directly from a Delaware River shooting rig. 1200-1500

319 VERY EARLY BROADBILL DRAKE by a member of the English family, possibly Jack English, Florence, NJ, circa the early 1900's. Very old working paint, some possibly the original. Structurally very good condition. Two small chips from underside of bill tip. Hollow carved. Retains bottom weight. From an early Delaware River shooting rig. 800-1200

320 FINE EARLY BLACK DUCK by John English, Florence, NJ. Very good old working paint showing minor wear. Structurally very good. Some chips and crack in tail. Carved raised wing tips and fluted tail. Hollow carved. Retains bottom pad weight. Branded R.A. STOCKTON. Paint drip to left side. This fine early Delaware River decoy is from an early Delaware River shooting rig. 1200-1800

321 VERY EARLY MALLARD DRAKE attributed to Jack English, Florence, NJ. Very old working paint, some possibly the original. Structurally excellent. Hollow carved. Retains bottom weight and rigging. For a similar example, see *New Jersey Decoys* by H. Fleckenstein, pg. 226, Plate 555. This decoy comes directly from an old Delaware River gunning rig. 800-1200





322 PAIR OF BUFFLEHEADS by William Geonne, King City, CA. Excellent original paint with some in-use wear. Structurally sound. Full keels. 100-200

323 COLOR LITHOGRAPH titled *End of Day* by Roland Clark, depicting two mallards landing in a marsh setting. Matted in what appears to be the original frame. Good condition. 75-125

324 BUFFLEHEAD DRAKE, New Jersey, possibly by Percy Gant. Weathered original paint and fair condition. Old bill repair. 50-75

325 GRAPHITE AND CHALK DRAWING by C.B. deGavre, Brig. Gen. USAF (Ret.), Onancock, VA, depicting a whimsical English scene. Generally good condition. Notation at lower right: *Hello Bertie, I say, have you really finished that article.* 50-75

326 MIXED METAL BUTCHER'S SCALE by C. Forschner's. *Improved Circular Spring Balance to Weigh 60 Lb.* 50-75

327 MALLARD HEN by Frank Reeder. Excellent detailed original paint. Very good structural condition with small tail chip. Maker's stamp on bottom. 200-300

328 GROUP OF FOUR DECOYS, fair condition. Working paint and condition. 75-125 *

329 PAIR OF FACTORY BLUEBILLS in very old paint, possibly the original. Both with inlet bottom weights. Both with two-piece construction. 100-150 *

330 GROUP OF APPROXIMATELY 40 DUCK HEADS, some painted, some unfinished. 50-75 *

331 TWO VERY EARLY SHOT GUN SHELL BOXES. Both in very good condition. 50-100 *

332 GROUP OF FOUR FACTORY DECOYS consisting of a BUFFLEHEAD, MALLARD, BLACK DUCK and CANVASBACK. All in old working paint. All structurally good. 100-200 *

333 GROUP OF FIVE VERY EARLY SMALL ARMS BOXES. Fair condition. All very early. Some fading and stains. 50-75

334 VINTAGE BLACK BEAR RUG in generally fair condition. Some losses to claws. Some areas of fur have thinned. Backed with green felt. Mounted in a snarling attitude. Loose claws included. 200-300



NOTES



Index

- A**
Adams, B. 255
Adams, F. 181
Allen, R. 99
Anderson, R. 215, 216
- B**
Babe, P. 221
Barrett, J. 265
Bicknell, P. 315
Birch, C. 159
Birdsall, C.R. 9, 11
Birdsall, J. 208, 297
Black, C. 242
Brown, D. 155, 156
Brown, F.C. 21
- C**
Chadwick, K. 260
Clark, R. 323
Conklin, H. 80-89, 189-198,
203-205, 207, 264
Cooke, G. 91
Corliss, R. 266
Cowan, W. 50, 51, 235
Cranmer, J.T. 122
Crowell, A.E. 167, 168, 169,
259
- D**
Daisey, D. 142-148
Daisey, R. 230
Daley, R. 271
deGavre, C.B. 163-166, 325
Dodge Decoy Factory 30, 43
Down East Decoy Co. 41
Dudley, L. 159A
Dunfee, G.M. 250
- E**
English Family 316, 319
English, Jack 321
English, John 318, 320
- F**
Faix, B. 118
Fitzpatrick, T. 78, 79, 317
- G**
Geonne, W. 322
Gibian, W. 184
Gosner, K. 274
Grant, S. 277
- H**
Hand, J.P. 97, 98
Hankins, E. 206
Harris, K. 283
Hayes Decoy Co. 39
Heinemann, B. 218
Heisler, J. 209, 211
Hendrickson, G. 264A, 314
Horner, N. 291, 293, 294,
294A
- I**
Irvine Bros. 47
- J**
Joeckel, B. 289
Johnson, L. 183, 311
Joiner, C. 124-126, 137, 138
- K**
Kears, M. 295
Kerr, B. 290
King, A.J. 162
King, J. 282
- L**
Langan, T. 120
Lawson, O. 154
Leslie, R. 305
- M**
Madara, C. 263
Marter, C.R., Jr. 64-72
Marter, C.R., Sr. 73-75, 77,
213, 245-248
Mason Decoy Co. 18, 23-29, 31-
38, 40, 44
McLoughlin, J. 239-241, 243
McLoughlin, L. 244
McPhail, J.E. 121
Miller, H. 92
Mitchell, R. 172-180, 185
Mitchell, R.M. 123, 139, 140
Morey, S. 104, 270, 276
Muehlmatt, E.F. 61, 232
Murray, G. 94, 95
- N**
Nitkiewicz, N. 186, 188
- O**
Ortley, E. 268
- P**
Parker, E. 262, 281
Penn, B. 201
Pierce, J. 126, 127, 129, 130,
135
Ponte, A. 272
- R**
Reeder, F. 327
Riehl, A. 46, 48, 55, 57, 59,
233, 252
Roberts, G. 257
- S**
Sabatini, R. 56, 96, 187, 217,
219, 220, 222, 223, 275
Schepis, R.E. 236, 237, 251
Schill, R. 45, 52-54, 58, 63
Shourds, H.V. (Seaville) 105,
119, 298-300
Shourds, H.V. (Tuckerton) 296,
301-304, 306
Siebert, J. 310
Sprankle, J. 114
Sterling, L. 161
Strater & Sohler 308
Strunk, G. 224-228
Sutton, S. 93
- T**
Tawes, L. 13
Theodore, A. 49
Travers, J.F. 132
Truex, R. 312
Tux Dux 20, 22
- U**
Urie, J. 149-153
- V**
Van Houzen, R. 273
Verity Family, 287, 288
Vickers, 158
- W**
Webb, C. 128
White, R. 249
Wildfowler Decoy Co. 1-8, 10,
12, 14-17, 19, 286
Wood, J. 170, 171

Conditions of Sale

Property listed for sale in this auction will be sold in accordance with the following terms and conditions.

1. Every effort has been made by Frank & Frank Sporting Collectibles LLC to describe articles offered for sale accurately. However, all property offered is sold "as is" and it is suggested that prospective bidders inspect the property before bidding or call this office for a detailed condition report.
2. A "Buyer's Premium" in the amount of 17-1/2% (discounted to 15% for cash or check) shall be added to the successful bid price and is payable by the purchaser as part of the total purchase price.
3. We reserve the right to withdraw any property or alter any catalog description prior to the sale and shall have no liability for such action.
4. We reserve the right to reject any bid. The highest bidder acknowledged by the auctioneer will be the purchaser. Should there be a dispute between bidders, the decision of the auctioneer will be binding.
5. We offer absentee and phone bidding as a service to our clients who are not present at auction. However, we are not responsible for errors or omissions in connection with the execution of such bids.
6. The auctioneer may reject any opening bid which he deems is insufficient and withdraw the article from the sale. The auctioneer may also reject any advance which he decides is insufficient.
7. All items purchased are subject to the 7% New Jersey Sales Tax, unless the purchaser possesses a valid tax exemption number.
8. Payment is due at time of purchase. No property will be released without payment in full. Methods of payment are cash, approved check, and Visa or Master Card.
9. All shipping and insurance charges are the responsibility of the purchaser. Unless otherwise noted, decoys are not sold with stands.
10. By participating in this sale, you indicate your acceptance of the terms and conditions.
11. Any legal conflict arising from this auction will be heard and judged by the court system in the state of New Jersey. NJSA applies to the auction and participants.
12. In the event of a dispute between bidders, the auctioneer reserves the right to determine the successful bidder, or re-offer and resell the disputed item.